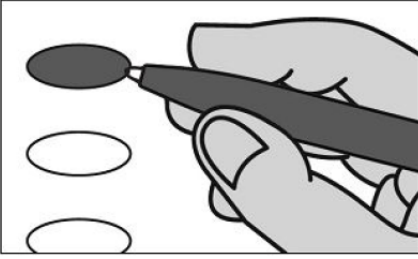


# OFFICIAL REPUBLICAN GENERAL PRIMARY BALLOT

Huntingdon County

Commonwealth of Pennsylvania

MAY 19, 2026



**INSTRUCTIONS TO VOTER:**

1. To vote you must blacken the oval (●) completely. An oval (●) blackened to the left of the name of any candidate indicates a vote for that candidate.
2. To vote for a person whose name is not on the ballot, you must blacken the oval (●) to the left of the line provided, and write or print the name in the blank space provided for that purpose.
3. Use only a black pen.
4. If you make a mistake, DO NOT CORRECT. Ask for a new ballot.
5. Do not fold the ballot unless voting by absentee or mail-in ballot.
6. WARNING: If you receive an absentee or mail-in ballot and return your voted ballot by the deadline, you may not vote at your polling place on election day. If you are unable to return your voted absentee or mail-in ballot by the deadline, you may only vote a provisional ballot at your polling place on election day, unless you surrender your absentee or mail-in ballot and return envelope containing the Voter's Declaration to the judge of elections to be voided to vote by regular ballot.

**SENATOR IN THE GENERAL ASSEMBLY  
30TH DISTRICT  
VOTE FOR ONE**

- JUDY WARD  
BLAIR COUNTY
- \_\_\_\_\_  
Write-in

**REPRESENTATIVE IN THE GENERAL ASSEMBLY  
81ST DISTRICT  
VOTE FOR ONE**

- RICH IRVIN  
HUNTINGDON COUNTY
- \_\_\_\_\_  
Write-in

**MEMBER OF REPUBLICAN STATE COMMITTEE  
31st DISTRICT  
VOTE FOR NOT MORE THAN TWO,  
ELECTING 1 MALE AND 1 FEMALE**

- JULIA B WILT  
HUNTINGDON COUNTY FEMALE
- STEVEN CAROWICK JR  
HUNTINGDON COUNTY MALE
- \_\_\_\_\_  
Write-in
- \_\_\_\_\_  
Write-in

**GOVERNOR  
VOTE FOR ONE**

- STACY GARRITY  
BRADFORD COUNTY
- \_\_\_\_\_  
Write-in

**MEMBER OF REPUBLICAN COUNTY COMMITTEE  
2 YEAR TERM  
VOTE FOR NO MORE THAN TWO**

- MICHAEL SCOTT
- JUDY A SCOTT
- \_\_\_\_\_  
Write-in
- \_\_\_\_\_  
Write-in

**LIEUTENANT GOVERNOR  
VOTE FOR ONE**

- JOHN VENTRE  
WESTMORELAND COUNTY
- JASON RICHEY  
ALLEGHENY COUNTY
- \_\_\_\_\_  
Write-in

**REPRESENTATIVE IN CONGRESS  
13TH DISTRICT  
VOTE FOR ONE**

- JOHN JOYCE  
BLAIR COUNTY
- \_\_\_\_\_  
Write-in

**HUNTINGDON COUNTY  
BOARD OF ELECTIONS**

*Scott Walk*  
*Patricia Reeder*  
*Jeffrey Thomas*

ALEXANDRIA

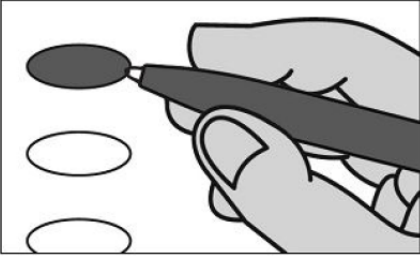
Typ:04 Seq:0001 Spl:01

# OFFICIAL REPUBLICAN GENERAL PRIMARY BALLOT

Huntingdon County

Commonwealth of Pennsylvania

MAY 19, 2026



**INSTRUCTIONS TO VOTER:**

1. To vote you must blacken the oval (●) completely. An oval (●) blackened to the left of the name of any candidate indicates a vote for that candidate.
2. To vote for a person whose name is not on the ballot, you must blacken the oval (●) to the left of the line provided, and write or print the name in the blank space provided for that purpose.
3. Use only a black pen.
4. If you make a mistake, DO NOT CORRECT. Ask for a new ballot.
5. Do not fold the ballot unless voting by absentee or mail-in ballot.
6. WARNING: If you receive an absentee or mail-in ballot and return your voted ballot by the deadline, you may not vote at your polling place on election day. If you are unable to return your voted absentee or mail-in ballot by the deadline, you may only vote a provisional ballot at your polling place on election day, unless you surrender your absentee or mail-in ballot and return envelope containing the Voter's Declaration to the judge of elections to be voided to vote by regular ballot.

**SENATOR IN THE GENERAL ASSEMBLY  
30TH DISTRICT  
VOTE FOR ONE**

- JUDY WARD  
BLAIR COUNTY
- \_\_\_\_\_  
Write-in

**REPRESENTATIVE IN THE GENERAL ASSEMBLY  
81ST DISTRICT  
VOTE FOR ONE**

- RICH IRVIN  
HUNTINGDON COUNTY
- \_\_\_\_\_  
Write-in

**MEMBER OF REPUBLICAN STATE COMMITTEE  
31st DISTRICT  
VOTE FOR NOT MORE THAN TWO,  
ELECTING 1 MALE AND 1 FEMALE**

- JULIA B WILT  
HUNTINGDON COUNTY FEMALE
- STEVEN CAROWICK JR  
HUNTINGDON COUNTY MALE
- \_\_\_\_\_  
Write-in
- \_\_\_\_\_  
Write-in

**GOVERNOR  
VOTE FOR ONE**

- STACY GARRITY  
BRADFORD COUNTY
- \_\_\_\_\_  
Write-in

**MEMBER OF REPUBLICAN COUNTY COMMITTEE  
2 YEAR TERM  
VOTE FOR NO MORE THAN TWO**

- \_\_\_\_\_  
Write-in
- \_\_\_\_\_  
Write-in

**LIEUTENANT GOVERNOR  
VOTE FOR ONE**

- JOHN VENTRE  
WESTMORELAND COUNTY
- JASON RICHEY  
ALLEGHENY COUNTY
- \_\_\_\_\_  
Write-in

**REPRESENTATIVE IN CONGRESS  
13TH DISTRICT  
VOTE FOR ONE**

- JOHN JOYCE  
BLAIR COUNTY
- \_\_\_\_\_  
Write-in

**HUNTINGDON COUNTY  
BOARD OF ELECTIONS**

*Scott Walk*  
*Patricia Reeder*  
*Jeffrey Thomas*

BARREE

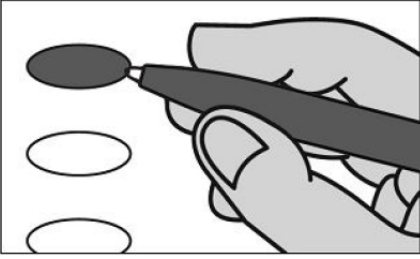
Typ:04 Seq:0002 Spl:01

# OFFICIAL REPUBLICAN GENERAL PRIMARY BALLOT

Huntingdon County

Commonwealth of Pennsylvania

MAY 19, 2026



### INSTRUCTIONS TO VOTER:

1. To vote you must blacken the oval (●) completely. An oval (●) blackened to the left of the name of any candidate indicates a vote for that candidate.
2. To vote for a person whose name is not on the ballot, you must blacken the oval (●) to the left of the line provided, and write or print the name in the blank space provided for that purpose.
3. Use only a black pen.
4. If you make a mistake, DO NOT CORRECT. Ask for a new ballot.
5. Do not fold the ballot unless voting by absentee or mail-in ballot.
6. WARNING: If you receive an absentee or mail-in ballot and return your voted ballot by the deadline, you may not vote at your polling place on election day. If you are unable to return your voted absentee or mail-in ballot by the deadline, you may only vote a provisional ballot at your polling place on election day, unless you surrender your absentee or mail-in ballot and return envelope containing the Voter's Declaration to the judge of elections to be voided to vote by regular ballot.

### SENATOR IN THE GENERAL ASSEMBLY 30TH DISTRICT VOTE FOR ONE

- JUDY WARD  
BLAIR COUNTY
- \_\_\_\_\_  
Write-in

### REPRESENTATIVE IN THE GENERAL ASSEMBLY 80TH DISTRICT VOTE FOR ONE

- SCOTT D BARGER  
BLAIR COUNTY
- \_\_\_\_\_  
Write-in

### MEMBER OF REPUBLICAN STATE COMMITTEE 31st DISTRICT VOTE FOR NOT MORE THAN TWO, ELECTING 1 MALE AND 1 FEMALE

- JULIA B WILT  
HUNTINGDON COUNTY FEMALE
- STEVEN CAROWICK JR  
HUNTINGDON COUNTY MALE
- \_\_\_\_\_  
Write-in
- \_\_\_\_\_  
Write-in

### GOVERNOR VOTE FOR ONE

- STACY GARRITY  
BRADFORD COUNTY
- \_\_\_\_\_  
Write-in

### MEMBER OF REPUBLICAN COUNTY COMMITTEE 2 YEAR TERM VOTE FOR NO MORE THAN TWO

- \_\_\_\_\_  
Write-in
- \_\_\_\_\_  
Write-in

### LIEUTENANT GOVERNOR VOTE FOR ONE

- JOHN VENTRE  
WESTMORELAND COUNTY
- JASON RICHEY  
ALLEGHENY COUNTY
- \_\_\_\_\_  
Write-in

### REPRESENTATIVE IN CONGRESS 13TH DISTRICT VOTE FOR ONE

- JOHN JOYCE  
BLAIR COUNTY
- \_\_\_\_\_  
Write-in

### HUNTINGDON COUNTY BOARD OF ELECTIONS

*Scott Walk*  
*Patricia Reeder*  
*Jeffrey Thomas*

BIRMINGHAM

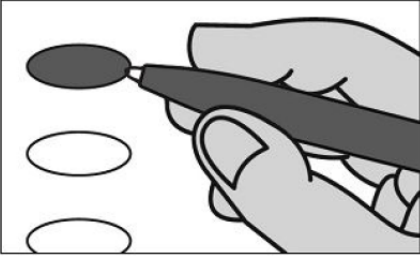
Typ:04 Seq:0003 Spl:01

# OFFICIAL REPUBLICAN GENERAL PRIMARY BALLOT

Huntingdon County

Commonwealth of Pennsylvania

MAY 19, 2026



**INSTRUCTIONS TO VOTER:**

1. To vote you must blacken the oval (●) completely. An oval (●) blackened to the left of the name of any candidate indicates a vote for that candidate.
2. To vote for a person whose name is not on the ballot, you must blacken the oval (●) to the left of the line provided, and write or print the name in the blank space provided for that purpose.
3. Use only a black pen.
4. If you make a mistake, DO NOT CORRECT. Ask for a new ballot.
5. Do not fold the ballot unless voting by absentee or mail-in ballot.
6. WARNING: If you receive an absentee or mail-in ballot and return your voted ballot by the deadline, you may not vote at your polling place on election day. If you are unable to return your voted absentee or mail-in ballot by the deadline, you may only vote a provisional ballot at your polling place on election day, unless you surrender your absentee or mail-in ballot and return envelope containing the Voter's Declaration to the judge of elections to be voided to vote by regular ballot.

**SENATOR IN THE GENERAL ASSEMBLY  
30TH DISTRICT  
VOTE FOR ONE**

- JUDY WARD  
BLAIR COUNTY
- \_\_\_\_\_  
Write-in

**REPRESENTATIVE IN THE GENERAL ASSEMBLY  
81ST DISTRICT  
VOTE FOR ONE**

- RICH IRVIN  
HUNTINGDON COUNTY
- \_\_\_\_\_  
Write-in

**MEMBER OF REPUBLICAN STATE COMMITTEE  
31st DISTRICT  
VOTE FOR NOT MORE THAN TWO,  
ELECTING 1 MALE AND 1 FEMALE**

- JULIA B WILT  
HUNTINGDON COUNTY FEMALE
- STEVEN CAROWICK JR  
HUNTINGDON COUNTY MALE
- \_\_\_\_\_  
Write-in
- \_\_\_\_\_  
Write-in

**GOVERNOR  
VOTE FOR ONE**

- STACY GARRITY  
BRADFORD COUNTY
- \_\_\_\_\_  
Write-in

**MEMBER OF REPUBLICAN COUNTY COMMITTEE  
2 YEAR TERM  
VOTE FOR NO MORE THAN TWO**

- LOUISE A BROWN
- PAUL W BROWN
- \_\_\_\_\_  
Write-in
- \_\_\_\_\_  
Write-in

**LIEUTENANT GOVERNOR  
VOTE FOR ONE**

- JOHN VENTRE  
WESTMORELAND COUNTY
- JASON RICHEY  
ALLEGHENY COUNTY
- \_\_\_\_\_  
Write-in

**REPRESENTATIVE IN CONGRESS  
13TH DISTRICT  
VOTE FOR ONE**

- JOHN JOYCE  
BLAIR COUNTY
- \_\_\_\_\_  
Write-in

**HUNTINGDON COUNTY  
BOARD OF ELECTIONS**

*Scott Walk*  
*Patricia Reeder*  
*Jeffrey Thomas*

BRADY

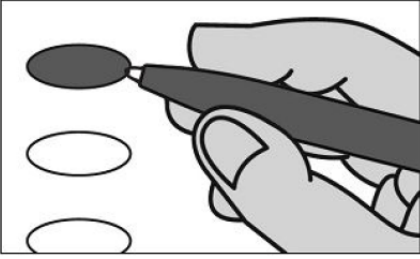
Typ:04 Seq:0004 Spl:01

# OFFICIAL REPUBLICAN GENERAL PRIMARY BALLOT

Huntingdon County

Commonwealth of Pennsylvania

MAY 19, 2026



**INSTRUCTIONS TO VOTER:**

1. To vote you must blacken the oval (●) completely. An oval (●) blackened to the left of the name of any candidate indicates a vote for that candidate.
2. To vote for a person whose name is not on the ballot, you must blacken the oval (●) to the left of the line provided, and write or print the name in the blank space provided for that purpose.
3. Use only a black pen.
4. If you make a mistake, DO NOT CORRECT. Ask for a new ballot.
5. Do not fold the ballot unless voting by absentee or mail-in ballot.
6. WARNING: If you receive an absentee or mail-in ballot and return your voted ballot by the deadline, you may not vote at your polling place on election day. If you are unable to return your voted absentee or mail-in ballot by the deadline, you may only vote a provisional ballot at your polling place on election day, unless you surrender your absentee or mail-in ballot and return envelope containing the Voter's Declaration to the judge of elections to be voided to vote by regular ballot.

**SENATOR IN THE GENERAL ASSEMBLY  
30TH DISTRICT  
VOTE FOR ONE**

- JUDY WARD  
BLAIR COUNTY
- \_\_\_\_\_  
Write-in

**REPRESENTATIVE IN THE GENERAL ASSEMBLY  
81ST DISTRICT  
VOTE FOR ONE**

- RICH IRVIN  
HUNTINGDON COUNTY
- \_\_\_\_\_  
Write-in

**MEMBER OF REPUBLICAN STATE COMMITTEE  
31st DISTRICT  
VOTE FOR NOT MORE THAN TWO,  
ELECTING 1 MALE AND 1 FEMALE**

- JULIA B WILT  
HUNTINGDON COUNTY FEMALE
- STEVEN CAROWICK JR  
HUNTINGDON COUNTY MALE
- \_\_\_\_\_  
Write-in
- \_\_\_\_\_  
Write-in

**GOVERNOR  
VOTE FOR ONE**

- STACY GARRITY  
BRADFORD COUNTY
- \_\_\_\_\_  
Write-in

**MEMBER OF REPUBLICAN COUNTY COMMITTEE  
2 YEAR TERM  
VOTE FOR NO MORE THAN TWO**

- \_\_\_\_\_  
Write-in
- \_\_\_\_\_  
Write-in

**LIEUTENANT GOVERNOR  
VOTE FOR ONE**

- JOHN VENTRE  
WESTMORELAND COUNTY
- JASON RICHEY  
ALLEGHENY COUNTY
- \_\_\_\_\_  
Write-in

**REPRESENTATIVE IN CONGRESS  
13TH DISTRICT  
VOTE FOR ONE**

- JOHN JOYCE  
BLAIR COUNTY
- \_\_\_\_\_  
Write-in

**HUNTINGDON COUNTY  
BOARD OF ELECTIONS**

*Scott Walk*  
*Patricia Reeder*  
*Jeffrey Thomas*

BROAD TOP

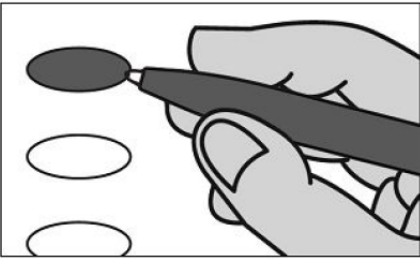
Typ:04 Seq:0005 Spl:01

# OFFICIAL REPUBLICAN GENERAL PRIMARY BALLOT

Huntingdon County

Commonwealth of Pennsylvania

MAY 19, 2026



### INSTRUCTIONS TO VOTER:

1. To vote you must blacken the oval (●) completely. An oval (●) blackened to the left of the name of any candidate indicates a vote for that candidate.
2. To vote for a person whose name is not on the ballot, you must blacken the oval (●) to the left of the line provided, and write or print the name in the blank space provided for that purpose.
3. Use only a black pen.
4. If you make a mistake, DO NOT CORRECT. Ask for a new ballot.
5. Do not fold the ballot unless voting by absentee or mail-in ballot.
6. WARNING: If you receive an absentee or mail-in ballot and return your voted ballot by the deadline, you may not vote at your polling place on election day. If you are unable to return your voted absentee or mail-in ballot by the deadline, you may only vote a provisional ballot at your polling place on election day, unless you surrender your absentee or mail-in ballot and return envelope containing the Voter's Declaration to the judge of elections to be voided to vote by regular ballot.

### SENATOR IN THE GENERAL ASSEMBLY 30TH DISTRICT VOTE FOR ONE

- JUDY WARD  
BLAIR COUNTY
- \_\_\_\_\_  
Write-in

### REPRESENTATIVE IN THE GENERAL ASSEMBLY 81ST DISTRICT VOTE FOR ONE

- RICH IRVIN  
HUNTINGDON COUNTY
- \_\_\_\_\_  
Write-in

### MEMBER OF REPUBLICAN STATE COMMITTEE 31st DISTRICT VOTE FOR NOT MORE THAN TWO, ELECTING 1 MALE AND 1 FEMALE

- JULIA B WILT  
HUNTINGDON COUNTY FEMALE
- STEVEN CAROWICK JR  
HUNTINGDON COUNTY MALE
- \_\_\_\_\_  
Write-in
- \_\_\_\_\_  
Write-in

### GOVERNOR VOTE FOR ONE

- STACY GARRITY  
BRADFORD COUNTY
- \_\_\_\_\_  
Write-in

### MEMBER OF REPUBLICAN COUNTY COMMITTEE 2 YEAR TERM VOTE FOR NO MORE THAN TWO

- \_\_\_\_\_  
Write-in
- \_\_\_\_\_  
Write-in

### LIEUTENANT GOVERNOR VOTE FOR ONE

- JOHN VENTRE  
WESTMORELAND COUNTY
- JASON RICHEY  
ALLEGHENY COUNTY
- \_\_\_\_\_  
Write-in

### REPRESENTATIVE IN CONGRESS 13TH DISTRICT VOTE FOR ONE

- JOHN JOYCE  
BLAIR COUNTY
- \_\_\_\_\_  
Write-in

### HUNTINGDON COUNTY BOARD OF ELECTIONS

*Scott Walk*  
*Patricia Reeder*  
*Jeffrey Thomas*

CARBON

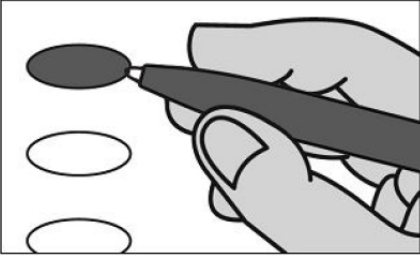
Typ:04 Seq:0006 Spl:01

# OFFICIAL REPUBLICAN GENERAL PRIMARY BALLOT

Huntingdon County

Commonwealth of Pennsylvania

MAY 19, 2026



**INSTRUCTIONS TO VOTER:**

1. To vote you must blacken the oval (●) completely. An oval (●) blackened to the left of the name of any candidate indicates a vote for that candidate.
2. To vote for a person whose name is not on the ballot, you must blacken the oval (●) to the left of the line provided, and write or print the name in the blank space provided for that purpose.
3. Use only a black pen.
4. If you make a mistake, DO NOT CORRECT. Ask for a new ballot.
5. Do not fold the ballot unless voting by absentee or mail-in ballot.
6. WARNING: If you receive an absentee or mail-in ballot and return your voted ballot by the deadline, you may not vote at your polling place on election day. If you are unable to return your voted absentee or mail-in ballot by the deadline, you may only vote a provisional ballot at your polling place on election day, unless you surrender your absentee or mail-in ballot and return envelope containing the Voter's Declaration to the judge of elections to be voided to vote by regular ballot.

**SENATOR IN THE GENERAL ASSEMBLY  
30TH DISTRICT  
VOTE FOR ONE**

- JUDY WARD  
BLAIR COUNTY
- \_\_\_\_\_  
Write-in

**REPRESENTATIVE IN THE GENERAL ASSEMBLY  
81ST DISTRICT  
VOTE FOR ONE**

- RICH IRVIN  
HUNTINGDON COUNTY
- \_\_\_\_\_  
Write-in

**MEMBER OF REPUBLICAN STATE COMMITTEE  
31st DISTRICT  
VOTE FOR NOT MORE THAN TWO,  
ELECTING 1 MALE AND 1 FEMALE**

- JULIA B WILT  
HUNTINGDON COUNTY FEMALE
- STEVEN CAROWICK JR  
HUNTINGDON COUNTY MALE
- \_\_\_\_\_  
Write-in
- \_\_\_\_\_  
Write-in

**GOVERNOR  
VOTE FOR ONE**

- STACY GARRITY  
BRADFORD COUNTY
- \_\_\_\_\_  
Write-in

**MEMBER OF REPUBLICAN COUNTY COMMITTEE  
2 YEAR TERM  
VOTE FOR NO MORE THAN TWO**

- WENDY MATTER
- STEVEN CAROWICK JR
- \_\_\_\_\_  
Write-in
- \_\_\_\_\_  
Write-in

**LIEUTENANT GOVERNOR  
VOTE FOR ONE**

- JOHN VENTRE  
WESTMORELAND COUNTY
- JASON RICHEY  
ALLEGHENY COUNTY
- \_\_\_\_\_  
Write-in

**REPRESENTATIVE IN CONGRESS  
13TH DISTRICT  
VOTE FOR ONE**

- JOHN JOYCE  
BLAIR COUNTY
- \_\_\_\_\_  
Write-in

**HUNTINGDON COUNTY  
BOARD OF ELECTIONS**

*Scott Walk*  
*Patricia Reeder*  
*Jeffrey Thomas*

CASS

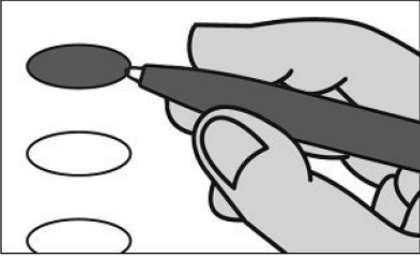
Typ:04 Seq:0007 Spl:01

# OFFICIAL REPUBLICAN GENERAL PRIMARY BALLOT

Huntingdon County

Commonwealth of Pennsylvania

MAY 19, 2026



**INSTRUCTIONS TO VOTER:**

1. To vote you must blacken the oval (●) completely. An oval (●) blackened to the left of the name of any candidate indicates a vote for that candidate.
2. To vote for a person whose name is not on the ballot, you must blacken the oval (●) to the left of the line provided, and write or print the name in the blank space provided for that purpose.
3. Use only a black pen.
4. If you make a mistake, DO NOT CORRECT. Ask for a new ballot.
5. Do not fold the ballot unless voting by absentee or mail-in ballot.
6. WARNING: If you receive an absentee or mail-in ballot and return your voted ballot by the deadline, you may not vote at your polling place on election day. If you are unable to return your voted absentee or mail-in ballot by the deadline, you may only vote a provisional ballot at your polling place on election day, unless you surrender your absentee or mail-in ballot and return envelope containing the Voter's Declaration to the judge of elections to be voided to vote by regular ballot.

**SENATOR IN THE GENERAL ASSEMBLY  
30TH DISTRICT  
VOTE FOR ONE**

- JUDY WARD  
BLAIR COUNTY
- \_\_\_\_\_  
Write-in

**REPRESENTATIVE IN THE GENERAL ASSEMBLY  
81ST DISTRICT  
VOTE FOR ONE**

- RICH IRVIN  
HUNTINGDON COUNTY
- \_\_\_\_\_  
Write-in

**MEMBER OF REPUBLICAN STATE COMMITTEE  
31st DISTRICT  
VOTE FOR NOT MORE THAN TWO,  
ELECTING 1 MALE AND 1 FEMALE**

- JULIA B WILT  
HUNTINGDON COUNTY FEMALE
- STEVEN CAROWICK JR  
HUNTINGDON COUNTY MALE
- \_\_\_\_\_  
Write-in
- \_\_\_\_\_  
Write-in

**GOVERNOR  
VOTE FOR ONE**

- STACY GARRITY  
BRADFORD COUNTY
- \_\_\_\_\_  
Write-in

**MEMBER OF REPUBLICAN COUNTY COMMITTEE  
2 YEAR TERM  
VOTE FOR NO MORE THAN TWO**

- AARON HICKS
- \_\_\_\_\_  
Write-in
- \_\_\_\_\_  
Write-in

**LIEUTENANT GOVERNOR  
VOTE FOR ONE**

- JOHN VENTRE  
WESTMORELAND COUNTY
- JASON RICHEY  
ALLEGHENY COUNTY
- \_\_\_\_\_  
Write-in

**REPRESENTATIVE IN CONGRESS  
13TH DISTRICT  
VOTE FOR ONE**

- JOHN JOYCE  
BLAIR COUNTY
- \_\_\_\_\_  
Write-in

**HUNTINGDON COUNTY  
BOARD OF ELECTIONS**

*Scott Walk*  
*Patricia Reeder*  
*Jeffrey Thomas*

CASSVILLE

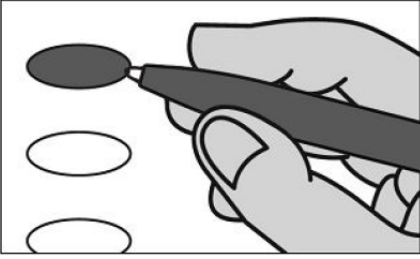
Typ:04 Seq:0008 Spl:01

# OFFICIAL REPUBLICAN GENERAL PRIMARY BALLOT

Huntingdon County

Commonwealth of Pennsylvania

MAY 19, 2026



**INSTRUCTIONS TO VOTER:**

1. To vote you must blacken the oval (●) completely. An oval (●) blackened to the left of the name of any candidate indicates a vote for that candidate.
2. To vote for a person whose name is not on the ballot, you must blacken the oval (●) to the left of the line provided, and write or print the name in the blank space provided for that purpose.
3. Use only a black pen.
4. If you make a mistake, DO NOT CORRECT. Ask for a new ballot.
5. Do not fold the ballot unless voting by absentee or mail-in ballot.
6. WARNING: If you receive an absentee or mail-in ballot and return your voted ballot by the deadline, you may not vote at your polling place on election day. If you are unable to return your voted absentee or mail-in ballot by the deadline, you may only vote a provisional ballot at your polling place on election day, unless you surrender your absentee or mail-in ballot and return envelope containing the Voter's Declaration to the judge of elections to be voided to vote by regular ballot.

**SENATOR IN THE GENERAL ASSEMBLY  
30TH DISTRICT  
VOTE FOR ONE**

- JUDY WARD  
BLAIR COUNTY
- \_\_\_\_\_  
Write-in

**REPRESENTATIVE IN THE GENERAL ASSEMBLY  
81ST DISTRICT  
VOTE FOR ONE**

- RICH IRVIN  
HUNTINGDON COUNTY
- \_\_\_\_\_  
Write-in

**MEMBER OF REPUBLICAN STATE COMMITTEE  
31st DISTRICT  
VOTE FOR NOT MORE THAN TWO,  
ELECTING 1 MALE AND 1 FEMALE**

- JULIA B WILT  
HUNTINGDON COUNTY FEMALE
- STEVEN CAROWICK JR  
HUNTINGDON COUNTY MALE
- \_\_\_\_\_  
Write-in
- \_\_\_\_\_  
Write-in

**GOVERNOR  
VOTE FOR ONE**

- STACY GARRITY  
BRADFORD COUNTY
- \_\_\_\_\_  
Write-in

**MEMBER OF REPUBLICAN COUNTY COMMITTEE  
2 YEAR TERM  
VOTE FOR NO MORE THAN TWO**

- \_\_\_\_\_  
Write-in
- \_\_\_\_\_  
Write-in

**LIEUTENANT GOVERNOR  
VOTE FOR ONE**

- JOHN VENTRE  
WESTMORELAND COUNTY
- JASON RICHEY  
ALLEGHENY COUNTY
- \_\_\_\_\_  
Write-in

**REPRESENTATIVE IN CONGRESS  
13TH DISTRICT  
VOTE FOR ONE**

- JOHN JOYCE  
BLAIR COUNTY
- \_\_\_\_\_  
Write-in

**HUNTINGDON COUNTY  
BOARD OF ELECTIONS**

*Scott Walk*  
*Patricia Reed*  
*Jeffrey Thomas*

CLAY

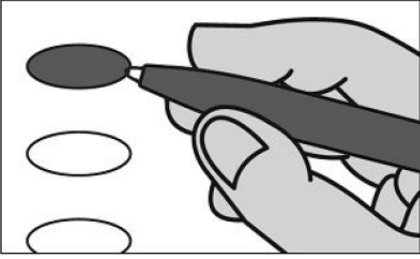
Typ:04 Seq:0009 Spl:01

# OFFICIAL REPUBLICAN GENERAL PRIMARY BALLOT

Huntingdon County

Commonwealth of Pennsylvania

MAY 19, 2026



### INSTRUCTIONS TO VOTER:

1. To vote you must blacken the oval (●) completely. An oval (●) blackened to the left of the name of any candidate indicates a vote for that candidate.
2. To vote for a person whose name is not on the ballot, you must blacken the oval (●) to the left of the line provided, and write or print the name in the blank space provided for that purpose.
3. Use only a black pen.
4. If you make a mistake, DO NOT CORRECT. Ask for a new ballot.
5. Do not fold the ballot unless voting by absentee or mail-in ballot.
6. WARNING: If you receive an absentee or mail-in ballot and return your voted ballot by the deadline, you may not vote at your polling place on election day. If you are unable to return your voted absentee or mail-in ballot by the deadline, you may only vote a provisional ballot at your polling place on election day, unless you surrender your absentee or mail-in ballot and return envelope containing the Voter's Declaration to the judge of elections to be voided to vote by regular ballot.

### SENATOR IN THE GENERAL ASSEMBLY 30TH DISTRICT VOTE FOR ONE

- JUDY WARD  
BLAIR COUNTY
- \_\_\_\_\_  
Write-in

### REPRESENTATIVE IN THE GENERAL ASSEMBLY 81ST DISTRICT VOTE FOR ONE

- RICH IRVIN  
HUNTINGDON COUNTY
- \_\_\_\_\_  
Write-in

### MEMBER OF REPUBLICAN STATE COMMITTEE 31st DISTRICT VOTE FOR NOT MORE THAN TWO, ELECTING 1 MALE AND 1 FEMALE

- JULIA B WILT  
HUNTINGDON COUNTY FEMALE
- STEVEN CAROWICK JR  
HUNTINGDON COUNTY MALE
- \_\_\_\_\_  
Write-in
- \_\_\_\_\_  
Write-in

### GOVERNOR VOTE FOR ONE

- STACY GARRITY  
BRADFORD COUNTY
- \_\_\_\_\_  
Write-in

### MEMBER OF REPUBLICAN COUNTY COMMITTEE 2 YEAR TERM VOTE FOR NO MORE THAN TWO

- \_\_\_\_\_  
Write-in
- \_\_\_\_\_  
Write-in

### LIEUTENANT GOVERNOR VOTE FOR ONE

- JOHN VENTRE  
WESTMORELAND COUNTY
- JASON RICHEY  
ALLEGHENY COUNTY
- \_\_\_\_\_  
Write-in

### REPRESENTATIVE IN CONGRESS 13TH DISTRICT VOTE FOR ONE

- JOHN JOYCE  
BLAIR COUNTY
- \_\_\_\_\_  
Write-in

### HUNTINGDON COUNTY BOARD OF ELECTIONS

*Scott Walk*  
*Patricia Reeder*  
*Jeffrey Thomas*

COALMONT

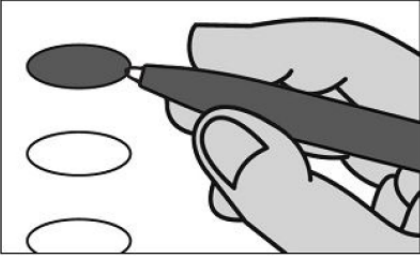
Typ:04 Seq:0010 Spl:01

# OFFICIAL REPUBLICAN GENERAL PRIMARY BALLOT

Huntingdon County

Commonwealth of Pennsylvania

MAY 19, 2026



**INSTRUCTIONS TO VOTER:**

1. To vote you must blacken the oval (●) completely. An oval (●) blackened to the left of the name of any candidate indicates a vote for that candidate.
2. To vote for a person whose name is not on the ballot, you must blacken the oval (●) to the left of the line provided, and write or print the name in the blank space provided for that purpose.
3. Use only a black pen.
4. If you make a mistake, DO NOT CORRECT. Ask for a new ballot.
5. Do not fold the ballot unless voting by absentee or mail-in ballot.
6. WARNING: If you receive an absentee or mail-in ballot and return your voted ballot by the deadline, you may not vote at your polling place on election day. If you are unable to return your voted absentee or mail-in ballot by the deadline, you may only vote a provisional ballot at your polling place on election day, unless you surrender your absentee or mail-in ballot and return envelope containing the Voter's Declaration to the judge of elections to be voided to vote by regular ballot.

**SENATOR IN THE GENERAL ASSEMBLY  
30TH DISTRICT  
VOTE FOR ONE**

- JUDY WARD  
BLAIR COUNTY
- \_\_\_\_\_  
Write-in

**REPRESENTATIVE IN THE GENERAL ASSEMBLY  
81ST DISTRICT  
VOTE FOR ONE**

- RICH IRVIN  
HUNTINGDON COUNTY
- \_\_\_\_\_  
Write-in

**MEMBER OF REPUBLICAN STATE COMMITTEE  
31st DISTRICT  
VOTE FOR NOT MORE THAN TWO,  
ELECTING 1 MALE AND 1 FEMALE**

- JULIA B WILT  
HUNTINGDON COUNTY FEMALE
- STEVEN CAROWICK JR  
HUNTINGDON COUNTY MALE
- \_\_\_\_\_  
Write-in
- \_\_\_\_\_  
Write-in

**GOVERNOR  
VOTE FOR ONE**

- STACY GARRITY  
BRADFORD COUNTY
- \_\_\_\_\_  
Write-in

**MEMBER OF REPUBLICAN COUNTY COMMITTEE  
2 YEAR TERM  
VOTE FOR NO MORE THAN TWO**

- WADE E BOOHER
- JASON A MCCLURE
- \_\_\_\_\_  
Write-in
- \_\_\_\_\_  
Write-in

**LIEUTENANT GOVERNOR  
VOTE FOR ONE**

- JOHN VENTRE  
WESTMORELAND COUNTY
- JASON RICHEY  
ALLEGHENY COUNTY
- \_\_\_\_\_  
Write-in

**REPRESENTATIVE IN CONGRESS  
13TH DISTRICT  
VOTE FOR ONE**

- JOHN JOYCE  
BLAIR COUNTY
- \_\_\_\_\_  
Write-in

**HUNTINGDON COUNTY  
BOARD OF ELECTIONS**

*Scott Walk*  
*Patricia Reeder*  
*Jeffrey Thomas*

CROMWELL

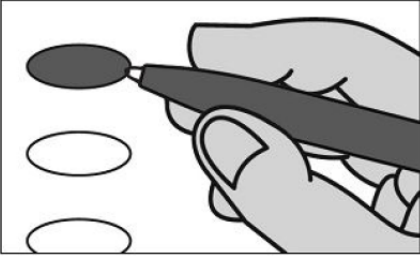
Typ:04 Seq:0011 Spl:01

# OFFICIAL REPUBLICAN GENERAL PRIMARY BALLOT

Huntingdon County

Commonwealth of Pennsylvania

MAY 19, 2026



**INSTRUCTIONS TO VOTER:**

1. To vote you must blacken the oval (●) completely. An oval (●) blackened to the left of the name of any candidate indicates a vote for that candidate.
2. To vote for a person whose name is not on the ballot, you must blacken the oval (●) to the left of the line provided, and write or print the name in the blank space provided for that purpose.
3. Use only a black pen.
4. If you make a mistake, DO NOT CORRECT. Ask for a new ballot.
5. Do not fold the ballot unless voting by absentee or mail-in ballot.
6. WARNING: If you receive an absentee or mail-in ballot and return your voted ballot by the deadline, you may not vote at your polling place on election day. If you are unable to return your voted absentee or mail-in ballot by the deadline, you may only vote a provisional ballot at your polling place on election day, unless you surrender your absentee or mail-in ballot and return envelope containing the Voter's Declaration to the judge of elections to be voided to vote by regular ballot.

**SENATOR IN THE GENERAL ASSEMBLY  
30TH DISTRICT  
VOTE FOR ONE**

- JUDY WARD  
BLAIR COUNTY
- \_\_\_\_\_  
Write-in

**REPRESENTATIVE IN THE GENERAL ASSEMBLY  
81ST DISTRICT  
VOTE FOR ONE**

- RICH IRVIN  
HUNTINGDON COUNTY
- \_\_\_\_\_  
Write-in

**MEMBER OF REPUBLICAN STATE COMMITTEE  
31st DISTRICT  
VOTE FOR NOT MORE THAN TWO,  
ELECTING 1 MALE AND 1 FEMALE**

- JULIA B WILT  
HUNTINGDON COUNTY FEMALE
- STEVEN CAROWICK JR  
HUNTINGDON COUNTY MALE
- \_\_\_\_\_  
Write-in
- \_\_\_\_\_  
Write-in

**GOVERNOR  
VOTE FOR ONE**

- STACY GARRITY  
BRADFORD COUNTY
- \_\_\_\_\_  
Write-in

**MEMBER OF REPUBLICAN COUNTY COMMITTEE  
2 YEAR TERM  
VOTE FOR NO MORE THAN TWO**

- \_\_\_\_\_  
Write-in
- \_\_\_\_\_  
Write-in

**LIEUTENANT GOVERNOR  
VOTE FOR ONE**

- JOHN VENTRE  
WESTMORELAND COUNTY
- JASON RICHEY  
ALLEGHENY COUNTY
- \_\_\_\_\_  
Write-in

**REPRESENTATIVE IN CONGRESS  
13TH DISTRICT  
VOTE FOR ONE**

- JOHN JOYCE  
BLAIR COUNTY
- \_\_\_\_\_  
Write-in

**HUNTINGDON COUNTY  
BOARD OF ELECTIONS**

*Scott Walk*  
*Patricia Reeder*  
*Jeffrey Thomas*

DUBLIN

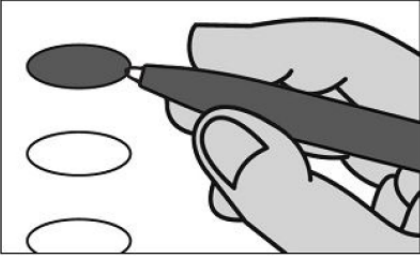
Typ:04 Seq:0012 Spl:01

# OFFICIAL REPUBLICAN GENERAL PRIMARY BALLOT

Huntingdon County

Commonwealth of Pennsylvania

MAY 19, 2026



**INSTRUCTIONS TO VOTER:**

1. To vote you must blacken the oval (●) completely. An oval (●) blackened to the left of the name of any candidate indicates a vote for that candidate.
2. To vote for a person whose name is not on the ballot, you must blacken the oval (●) to the left of the line provided, and write or print the name in the blank space provided for that purpose.
3. Use only a black pen.
4. If you make a mistake, DO NOT CORRECT. Ask for a new ballot.
5. Do not fold the ballot unless voting by absentee or mail-in ballot.
6. WARNING: If you receive an absentee or mail-in ballot and return your voted ballot by the deadline, you may not vote at your polling place on election day. If you are unable to return your voted absentee or mail-in ballot by the deadline, you may only vote a provisional ballot at your polling place on election day, unless you surrender your absentee or mail-in ballot and return envelope containing the Voter's Declaration to the judge of elections to be voided to vote by regular ballot.

**SENATOR IN THE GENERAL ASSEMBLY  
30TH DISTRICT  
VOTE FOR ONE**

- JUDY WARD  
BLAIR COUNTY
- \_\_\_\_\_  
Write-in

**REPRESENTATIVE IN THE GENERAL ASSEMBLY  
81ST DISTRICT  
VOTE FOR ONE**

- RICH IRVIN  
HUNTINGDON COUNTY
- \_\_\_\_\_  
Write-in

**MEMBER OF REPUBLICAN STATE COMMITTEE  
31st DISTRICT  
VOTE FOR NOT MORE THAN TWO,  
ELECTING 1 MALE AND 1 FEMALE**

- JULIA B WILT  
HUNTINGDON COUNTY FEMALE
- STEVEN CAROWICK JR  
HUNTINGDON COUNTY MALE
- \_\_\_\_\_  
Write-in
- \_\_\_\_\_  
Write-in

**GOVERNOR  
VOTE FOR ONE**

- STACY GARRITY  
BRADFORD COUNTY
- \_\_\_\_\_  
Write-in

**MEMBER OF REPUBLICAN COUNTY COMMITTEE  
2 YEAR TERM  
VOTE FOR NO MORE THAN TWO**

- \_\_\_\_\_  
Write-in
- \_\_\_\_\_  
Write-in

**LIEUTENANT GOVERNOR  
VOTE FOR ONE**

- JOHN VENTRE  
WESTMORELAND COUNTY
- JASON RICHEY  
ALLEGHENY COUNTY
- \_\_\_\_\_  
Write-in

**REPRESENTATIVE IN CONGRESS  
13TH DISTRICT  
VOTE FOR ONE**

- JOHN JOYCE  
BLAIR COUNTY
- \_\_\_\_\_  
Write-in

**HUNTINGDON COUNTY  
BOARD OF ELECTIONS**

*Scott Walk*  
*Patricia Reeder*  
*Jeffrey Thomas*

DUDLEY

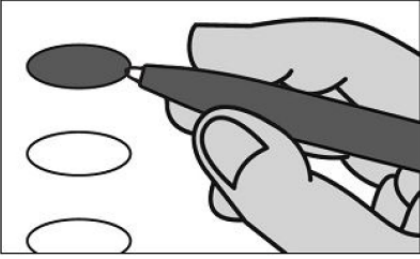
Typ:04 Seq:0013 Spl:01

# OFFICIAL REPUBLICAN GENERAL PRIMARY BALLOT

Huntingdon County

Commonwealth of Pennsylvania

MAY 19, 2026



**INSTRUCTIONS TO VOTER:**

1. To vote you must blacken the oval (●) completely. An oval (●) blackened to the left of the name of any candidate indicates a vote for that candidate.
2. To vote for a person whose name is not on the ballot, you must blacken the oval (●) to the left of the line provided, and write or print the name in the blank space provided for that purpose.
3. Use only a black pen.
4. If you make a mistake, DO NOT CORRECT. Ask for a new ballot.
5. Do not fold the ballot unless voting by absentee or mail-in ballot.
6. WARNING: If you receive an absentee or mail-in ballot and return your voted ballot by the deadline, you may not vote at your polling place on election day. If you are unable to return your voted absentee or mail-in ballot by the deadline, you may only vote a provisional ballot at your polling place on election day, unless you surrender your absentee or mail-in ballot and return envelope containing the Voter's Declaration to the judge of elections to be voided to vote by regular ballot.

**SENATOR IN THE GENERAL ASSEMBLY  
30TH DISTRICT  
VOTE FOR ONE**

- JUDY WARD  
BLAIR COUNTY
- \_\_\_\_\_  
Write-in

**REPRESENTATIVE IN THE GENERAL ASSEMBLY  
80TH DISTRICT  
VOTE FOR ONE**

- SCOTT D BARGER  
BLAIR COUNTY
- \_\_\_\_\_  
Write-in

**MEMBER OF REPUBLICAN STATE COMMITTEE  
31st DISTRICT  
VOTE FOR NOT MORE THAN TWO,  
ELECTING 1 MALE AND 1 FEMALE**

- JULIA B WILT  
HUNTINGDON COUNTY FEMALE
- STEVEN CAROWICK JR  
HUNTINGDON COUNTY MALE
- \_\_\_\_\_  
Write-in
- \_\_\_\_\_  
Write-in

**GOVERNOR  
VOTE FOR ONE**

- STACY GARRITY  
BRADFORD COUNTY
- \_\_\_\_\_  
Write-in

**MEMBER OF REPUBLICAN COUNTY COMMITTEE  
2 YEAR TERM  
VOTE FOR NO MORE THAN TWO**

- \_\_\_\_\_  
Write-in
- \_\_\_\_\_  
Write-in

**LIEUTENANT GOVERNOR  
VOTE FOR ONE**

- JOHN VENTRE  
WESTMORELAND COUNTY
- JASON RICHEY  
ALLEGHENY COUNTY
- \_\_\_\_\_  
Write-in

**REPRESENTATIVE IN CONGRESS  
13TH DISTRICT  
VOTE FOR ONE**

- JOHN JOYCE  
BLAIR COUNTY
- \_\_\_\_\_  
Write-in

**HUNTINGDON COUNTY  
BOARD OF ELECTIONS**

*Scott Walk*  
*Patricia Reeder*  
*Jeffrey Thomas*

FRANKLIN

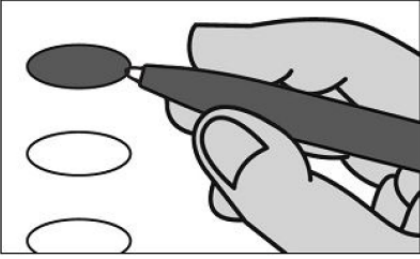
Typ:04 Seq:0014 Spl:01

# OFFICIAL REPUBLICAN GENERAL PRIMARY BALLOT

Huntingdon County

Commonwealth of Pennsylvania

MAY 19, 2026



**INSTRUCTIONS TO VOTER:**

1. To vote you must blacken the oval (●) completely. An oval (●) blackened to the left of the name of any candidate indicates a vote for that candidate.
2. To vote for a person whose name is not on the ballot, you must blacken the oval (●) to the left of the line provided, and write or print the name in the blank space provided for that purpose.
3. Use only a black pen.
4. If you make a mistake, DO NOT CORRECT. Ask for a new ballot.
5. Do not fold the ballot unless voting by absentee or mail-in ballot.
6. WARNING: If you receive an absentee or mail-in ballot and return your voted ballot by the deadline, you may not vote at your polling place on election day. If you are unable to return your voted absentee or mail-in ballot by the deadline, you may only vote a provisional ballot at your polling place on election day, unless you surrender your absentee or mail-in ballot and return envelope containing the Voter's Declaration to the judge of elections to be voided to vote by regular ballot.

**SENATOR IN THE GENERAL ASSEMBLY  
30TH DISTRICT  
VOTE FOR ONE**

- JUDY WARD  
BLAIR COUNTY
- \_\_\_\_\_  
Write-in

**REPRESENTATIVE IN THE GENERAL ASSEMBLY  
81ST DISTRICT  
VOTE FOR ONE**

- RICH IRVIN  
HUNTINGDON COUNTY
- \_\_\_\_\_  
Write-in

**MEMBER OF REPUBLICAN STATE COMMITTEE  
31st DISTRICT  
VOTE FOR NOT MORE THAN TWO,  
ELECTING 1 MALE AND 1 FEMALE**

- JULIA B WILT  
HUNTINGDON COUNTY FEMALE
- STEVEN CAROWICK JR  
HUNTINGDON COUNTY MALE
- \_\_\_\_\_  
Write-in
- \_\_\_\_\_  
Write-in

**GOVERNOR  
VOTE FOR ONE**

- STACY GARRITY  
BRADFORD COUNTY
- \_\_\_\_\_  
Write-in

**MEMBER OF REPUBLICAN COUNTY COMMITTEE  
2 YEAR TERM  
VOTE FOR NO MORE THAN TWO**

- \_\_\_\_\_  
Write-in
- \_\_\_\_\_  
Write-in

**LIEUTENANT GOVERNOR  
VOTE FOR ONE**

- JOHN VENTRE  
WESTMORELAND COUNTY
- JASON RICHEY  
ALLEGHENY COUNTY
- \_\_\_\_\_  
Write-in

**REPRESENTATIVE IN CONGRESS  
13TH DISTRICT  
VOTE FOR ONE**

- JOHN JOYCE  
BLAIR COUNTY
- \_\_\_\_\_  
Write-in

**HUNTINGDON COUNTY  
BOARD OF ELECTIONS**

*Scott Walk*  
*Patricia Reeder*  
*Jeffrey Thomas*

HENDERSON

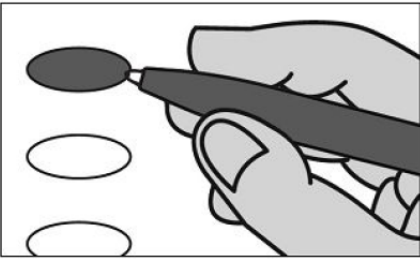
Typ:04 Seq:0015 Spl:01

# OFFICIAL REPUBLICAN GENERAL PRIMARY BALLOT

Huntingdon County

Commonwealth of Pennsylvania

MAY 19, 2026



### INSTRUCTIONS TO VOTER:

1. To vote you must blacken the oval (●) completely. An oval (●) blackened to the left of the name of any candidate indicates a vote for that candidate.
2. To vote for a person whose name is not on the ballot, you must blacken the oval (●) to the left of the line provided, and write or print the name in the blank space provided for that purpose.
3. Use only a black pen.
4. If you make a mistake, DO NOT CORRECT. Ask for a new ballot.
5. Do not fold the ballot unless voting by absentee or mail-in ballot.
6. WARNING: If you receive an absentee or mail-in ballot and return your voted ballot by the deadline, you may not vote at your polling place on election day. If you are unable to return your voted absentee or mail-in ballot by the deadline, you may only vote a provisional ballot at your polling place on election day, unless you surrender your absentee or mail-in ballot and return envelope containing the Voter's Declaration to the judge of elections to be voided to vote by regular ballot.

### SENATOR IN THE GENERAL ASSEMBLY 30TH DISTRICT VOTE FOR ONE

- JUDY WARD  
BLAIR COUNTY
- \_\_\_\_\_  
Write-in

### REPRESENTATIVE IN THE GENERAL ASSEMBLY 81ST DISTRICT VOTE FOR ONE

- RICH IRVIN  
HUNTINGDON COUNTY
- \_\_\_\_\_  
Write-in

### MEMBER OF REPUBLICAN STATE COMMITTEE 31st DISTRICT VOTE FOR NOT MORE THAN TWO, ELECTING 1 MALE AND 1 FEMALE

- JULIA B WILT  
HUNTINGDON COUNTY FEMALE
- STEVEN CAROWICK JR  
HUNTINGDON COUNTY MALE
- \_\_\_\_\_  
Write-in
- \_\_\_\_\_  
Write-in

### GOVERNOR VOTE FOR ONE

- STACY GARRITY  
BRADFORD COUNTY
- \_\_\_\_\_  
Write-in

### MEMBER OF REPUBLICAN COUNTY COMMITTEE 2 YEAR TERM VOTE FOR NO MORE THAN TWO

- \_\_\_\_\_  
Write-in
- \_\_\_\_\_  
Write-in

### LIEUTENANT GOVERNOR VOTE FOR ONE

- JOHN VENTRE  
WESTMORELAND COUNTY
- JASON RICHEY  
ALLEGHENY COUNTY
- \_\_\_\_\_  
Write-in

### REPRESENTATIVE IN CONGRESS 13TH DISTRICT VOTE FOR ONE

- JOHN JOYCE  
BLAIR COUNTY
- \_\_\_\_\_  
Write-in

### HUNTINGDON COUNTY BOARD OF ELECTIONS

*Scott Walk*  
*Patricia Reeder*  
*Jeffrey Thomas*

HOPEWELL\_HOPEWELL

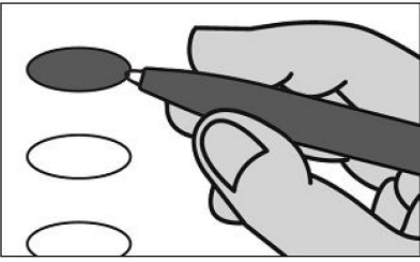
Typ:04 Seq:0016 Spl:01

# OFFICIAL REPUBLICAN GENERAL PRIMARY BALLOT

Huntingdon County

Commonwealth of Pennsylvania

MAY 19, 2026



### INSTRUCTIONS TO VOTER:

1. To vote you must blacken the oval (●) completely. An oval (●) blackened to the left of the name of any candidate indicates a vote for that candidate.
2. To vote for a person whose name is not on the ballot, you must blacken the oval (●) to the left of the line provided, and write or print the name in the blank space provided for that purpose.
3. Use only a black pen.
4. If you make a mistake, DO NOT CORRECT. Ask for a new ballot.
5. Do not fold the ballot unless voting by absentee or mail-in ballot.
6. WARNING: If you receive an absentee or mail-in ballot and return your voted ballot by the deadline, you may not vote at your polling place on election day. If you are unable to return your voted absentee or mail-in ballot by the deadline, you may only vote a provisional ballot at your polling place on election day, unless you surrender your absentee or mail-in ballot and return envelope containing the Voter's Declaration to the judge of elections to be voided to vote by regular ballot.

### SENATOR IN THE GENERAL ASSEMBLY 30TH DISTRICT VOTE FOR ONE

- JUDY WARD  
BLAIR COUNTY
- \_\_\_\_\_  
Write-in

### REPRESENTATIVE IN THE GENERAL ASSEMBLY 81ST DISTRICT VOTE FOR ONE

- RICH IRVIN  
HUNTINGDON COUNTY
- \_\_\_\_\_  
Write-in

### MEMBER OF REPUBLICAN STATE COMMITTEE 31st DISTRICT VOTE FOR NOT MORE THAN TWO, ELECTING 1 MALE AND 1 FEMALE

- JULIA B WILT  
HUNTINGDON COUNTY FEMALE
- STEVEN CAROWICK JR  
HUNTINGDON COUNTY MALE
- \_\_\_\_\_  
Write-in
- \_\_\_\_\_  
Write-in

### GOVERNOR VOTE FOR ONE

- STACY GARRITY  
BRADFORD COUNTY
- \_\_\_\_\_  
Write-in

### MEMBER OF REPUBLICAN COUNTY COMMITTEE 2 YEAR TERM VOTE FOR NO MORE THAN TWO

- \_\_\_\_\_  
Write-in
- \_\_\_\_\_  
Write-in

### LIEUTENANT GOVERNOR VOTE FOR ONE

- JOHN VENTRE  
WESTMORELAND COUNTY
- JASON RICHEY  
ALLEGHENY COUNTY
- \_\_\_\_\_  
Write-in

### REPRESENTATIVE IN CONGRESS 13TH DISTRICT VOTE FOR ONE

- JOHN JOYCE  
BLAIR COUNTY
- \_\_\_\_\_  
Write-in

### HUNTINGDON COUNTY BOARD OF ELECTIONS

*Scott Walk*  
*Patricia Reeder*  
*Jeffrey Thomas*

HOPEWELL\_PUTTSTOWN

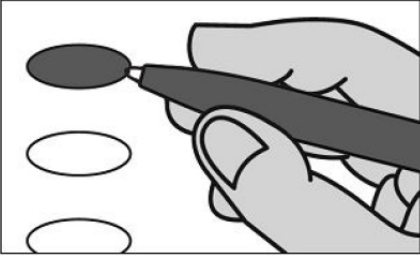
Typ:04 Seq:0017 Spl:01

# OFFICIAL REPUBLICAN GENERAL PRIMARY BALLOT

Huntingdon County

Commonwealth of Pennsylvania

MAY 19, 2026



### INSTRUCTIONS TO VOTER:

1. To vote you must blacken the oval (●) completely. An oval (●) blackened to the left of the name of any candidate indicates a vote for that candidate.
2. To vote for a person whose name is not on the ballot, you must blacken the oval (●) to the left of the line provided, and write or print the name in the blank space provided for that purpose.
3. Use only a black pen.
4. If you make a mistake, DO NOT CORRECT. Ask for a new ballot.
5. Do not fold the ballot unless voting by absentee or mail-in ballot.
6. WARNING: If you receive an absentee or mail-in ballot and return your voted ballot by the deadline, you may not vote at your polling place on election day. If you are unable to return your voted absentee or mail-in ballot by the deadline, you may only vote a provisional ballot at your polling place on election day, unless you surrender your absentee or mail-in ballot and return envelope containing the Voter's Declaration to the judge of elections to be voided to vote by regular ballot.

### SENATOR IN THE GENERAL ASSEMBLY 30TH DISTRICT VOTE FOR ONE

- JUDY WARD  
BLAIR COUNTY
- \_\_\_\_\_  
Write-in

### REPRESENTATIVE IN THE GENERAL ASSEMBLY 81ST DISTRICT VOTE FOR ONE

- RICH IRVIN  
HUNTINGDON COUNTY
- \_\_\_\_\_  
Write-in

### MEMBER OF REPUBLICAN STATE COMMITTEE 31st DISTRICT VOTE FOR NOT MORE THAN TWO, ELECTING 1 MALE AND 1 FEMALE

- JULIA B WILT  
HUNTINGDON COUNTY FEMALE
- STEVEN CAROWICK JR  
HUNTINGDON COUNTY MALE
- \_\_\_\_\_  
Write-in
- \_\_\_\_\_  
Write-in

### GOVERNOR VOTE FOR ONE

- STACY GARRITY  
BRADFORD COUNTY
- \_\_\_\_\_  
Write-in

### MEMBER OF REPUBLICAN COUNTY COMMITTEE 2 YEAR TERM VOTE FOR NO MORE THAN TWO

- \_\_\_\_\_  
Write-in
- \_\_\_\_\_  
Write-in

### LIEUTENANT GOVERNOR VOTE FOR ONE

- JOHN VENTRE  
WESTMORELAND COUNTY
- JASON RICHEY  
ALLEGHENY COUNTY
- \_\_\_\_\_  
Write-in

### REPRESENTATIVE IN CONGRESS 13TH DISTRICT VOTE FOR ONE

- JOHN JOYCE  
BLAIR COUNTY
- \_\_\_\_\_  
Write-in

### HUNTINGDON COUNTY BOARD OF ELECTIONS

*Scott Walk*  
*Patricia Reeder*  
*Jeffrey Thomas*

HUNTINGDON 1

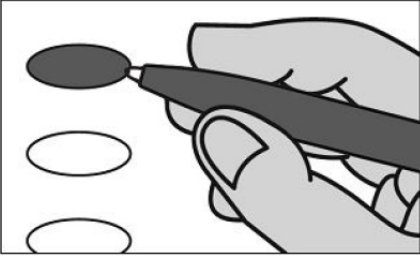
Typ:04 Seq:0018 Spl:01

# OFFICIAL REPUBLICAN GENERAL PRIMARY BALLOT

Huntingdon County

Commonwealth of Pennsylvania

MAY 19, 2026



### INSTRUCTIONS TO VOTER:

1. To vote you must blacken the oval (●) completely. An oval (●) blackened to the left of the name of any candidate indicates a vote for that candidate.
2. To vote for a person whose name is not on the ballot, you must blacken the oval (●) to the left of the line provided, and write or print the name in the blank space provided for that purpose.
3. Use only a black pen.
4. If you make a mistake, DO NOT CORRECT. Ask for a new ballot.
5. Do not fold the ballot unless voting by absentee or mail-in ballot.
6. WARNING: If you receive an absentee or mail-in ballot and return your voted ballot by the deadline, you may not vote at your polling place on election day. If you are unable to return your voted absentee or mail-in ballot by the deadline, you may only vote a provisional ballot at your polling place on election day, unless you surrender your absentee or mail-in ballot and return envelope containing the Voter's Declaration to the judge of elections to be voided to vote by regular ballot.

### SENATOR IN THE GENERAL ASSEMBLY 30TH DISTRICT VOTE FOR ONE

- JUDY WARD  
BLAIR COUNTY
- \_\_\_\_\_  
Write-in

### REPRESENTATIVE IN THE GENERAL ASSEMBLY 81ST DISTRICT VOTE FOR ONE

- RICH IRVIN  
HUNTINGDON COUNTY
- \_\_\_\_\_  
Write-in

### MEMBER OF REPUBLICAN STATE COMMITTEE 31st DISTRICT VOTE FOR NOT MORE THAN TWO, ELECTING 1 MALE AND 1 FEMALE

- JULIA B WILT  
HUNTINGDON COUNTY FEMALE
- STEVEN CAROWICK JR  
HUNTINGDON COUNTY MALE
- \_\_\_\_\_  
Write-in
- \_\_\_\_\_  
Write-in

### GOVERNOR VOTE FOR ONE

- STACY GARRITY  
BRADFORD COUNTY
- \_\_\_\_\_  
Write-in

### MEMBER OF REPUBLICAN COUNTY COMMITTEE 2 YEAR TERM VOTE FOR NO MORE THAN TWO

- JULIA B WILT
- MELITA I RENNINGER
- \_\_\_\_\_  
Write-in
- \_\_\_\_\_  
Write-in

### LIEUTENANT GOVERNOR VOTE FOR ONE

- JOHN VENTRE  
WESTMORELAND COUNTY
- JASON RICHEY  
ALLEGHENY COUNTY
- \_\_\_\_\_  
Write-in

### REPRESENTATIVE IN CONGRESS 13TH DISTRICT VOTE FOR ONE

- JOHN JOYCE  
BLAIR COUNTY
- \_\_\_\_\_  
Write-in

### HUNTINGDON COUNTY BOARD OF ELECTIONS

*Scott Walk*  
*Patricia Reeder*  
*Jeffrey Thomas*

HUNTINGDON 2

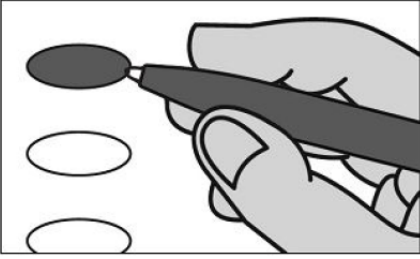
Typ:04 Seq:0019 Spl:01

# OFFICIAL REPUBLICAN GENERAL PRIMARY BALLOT

Huntingdon County

Commonwealth of Pennsylvania

MAY 19, 2026



**INSTRUCTIONS TO VOTER:**

1. To vote you must blacken the oval (●) completely. An oval (●) blackened to the left of the name of any candidate indicates a vote for that candidate.
2. To vote for a person whose name is not on the ballot, you must blacken the oval (●) to the left of the line provided, and write or print the name in the blank space provided for that purpose.
3. Use only a black pen.
4. If you make a mistake, DO NOT CORRECT. Ask for a new ballot.
5. Do not fold the ballot unless voting by absentee or mail-in ballot.
6. WARNING: If you receive an absentee or mail-in ballot and return your voted ballot by the deadline, you may not vote at your polling place on election day. If you are unable to return your voted absentee or mail-in ballot by the deadline, you may only vote a provisional ballot at your polling place on election day, unless you surrender your absentee or mail-in ballot and return envelope containing the Voter's Declaration to the judge of elections to be voided to vote by regular ballot.

**SENATOR IN THE GENERAL ASSEMBLY  
30TH DISTRICT  
VOTE FOR ONE**

- JUDY WARD  
BLAIR COUNTY
- \_\_\_\_\_  
Write-in

**REPRESENTATIVE IN THE GENERAL ASSEMBLY  
81ST DISTRICT  
VOTE FOR ONE**

- RICH IRVIN  
HUNTINGDON COUNTY
- \_\_\_\_\_  
Write-in

**MEMBER OF REPUBLICAN STATE COMMITTEE  
31st DISTRICT  
VOTE FOR NOT MORE THAN TWO,  
ELECTING 1 MALE AND 1 FEMALE**

- JULIA B WILT  
HUNTINGDON COUNTY FEMALE
- STEVEN CAROWICK JR  
HUNTINGDON COUNTY MALE
- \_\_\_\_\_  
Write-in
- \_\_\_\_\_  
Write-in

**GOVERNOR  
VOTE FOR ONE**

- STACY GARRITY  
BRADFORD COUNTY
- \_\_\_\_\_  
Write-in

**MEMBER OF REPUBLICAN COUNTY COMMITTEE  
2 YEAR TERM  
VOTE FOR NO MORE THAN TWO**

- GAIE ISETT WILT
- \_\_\_\_\_  
Write-in
- \_\_\_\_\_  
Write-in

**LIEUTENANT GOVERNOR  
VOTE FOR ONE**

- JOHN VENTRE  
WESTMORELAND COUNTY
- JASON RICHEY  
ALLEGHENY COUNTY
- \_\_\_\_\_  
Write-in

**REPRESENTATIVE IN CONGRESS  
13TH DISTRICT  
VOTE FOR ONE**

- JOHN JOYCE  
BLAIR COUNTY
- \_\_\_\_\_  
Write-in

**HUNTINGDON COUNTY  
BOARD OF ELECTIONS**

*Scott Walk*  
*Patricia Reeder*  
*Jeffrey Thomas*

HUNTINGDON 3

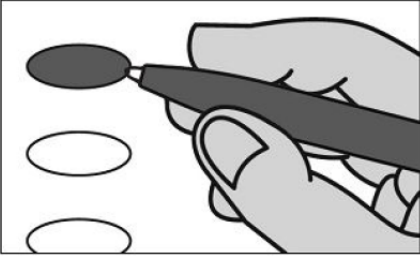
Typ:04 Seq:0020 Spl:01

# OFFICIAL REPUBLICAN GENERAL PRIMARY BALLOT

Huntingdon County

Commonwealth of Pennsylvania

MAY 19, 2026



### INSTRUCTIONS TO VOTER:

1. To vote you must blacken the oval (●) completely. An oval (●) blackened to the left of the name of any candidate indicates a vote for that candidate.
2. To vote for a person whose name is not on the ballot, you must blacken the oval (●) to the left of the line provided, and write or print the name in the blank space provided for that purpose.
3. Use only a black pen.
4. If you make a mistake, DO NOT CORRECT. Ask for a new ballot.
5. Do not fold the ballot unless voting by absentee or mail-in ballot.
6. WARNING: If you receive an absentee or mail-in ballot and return your voted ballot by the deadline, you may not vote at your polling place on election day. If you are unable to return your voted absentee or mail-in ballot by the deadline, you may only vote a provisional ballot at your polling place on election day, unless you surrender your absentee or mail-in ballot and return envelope containing the Voter's Declaration to the judge of elections to be voided to vote by regular ballot.

### SENATOR IN THE GENERAL ASSEMBLY 30TH DISTRICT VOTE FOR ONE

- JUDY WARD  
BLAIR COUNTY
- \_\_\_\_\_  
Write-in

### REPRESENTATIVE IN THE GENERAL ASSEMBLY 81ST DISTRICT VOTE FOR ONE

- RICH IRVIN  
HUNTINGDON COUNTY
- \_\_\_\_\_  
Write-in

### MEMBER OF REPUBLICAN STATE COMMITTEE 31st DISTRICT VOTE FOR NOT MORE THAN TWO, ELECTING 1 MALE AND 1 FEMALE

- JULIA B WILT  
HUNTINGDON COUNTY FEMALE
- STEVEN CAROWICK JR  
HUNTINGDON COUNTY MALE
- \_\_\_\_\_  
Write-in
- \_\_\_\_\_  
Write-in

### GOVERNOR VOTE FOR ONE

- STACY GARRITY  
BRADFORD COUNTY
- \_\_\_\_\_  
Write-in

### MEMBER OF REPUBLICAN COUNTY COMMITTEE 2 YEAR TERM VOTE FOR NO MORE THAN TWO

- KATHRYN A OSER
- DICK SCIALABBA
- \_\_\_\_\_  
Write-in
- \_\_\_\_\_  
Write-in

### LIEUTENANT GOVERNOR VOTE FOR ONE

- JOHN VENTRE  
WESTMORELAND COUNTY
- JASON RICHEY  
ALLEGHENY COUNTY
- \_\_\_\_\_  
Write-in

### REPRESENTATIVE IN CONGRESS 13TH DISTRICT VOTE FOR ONE

- JOHN JOYCE  
BLAIR COUNTY
- \_\_\_\_\_  
Write-in

### HUNTINGDON COUNTY BOARD OF ELECTIONS

*Scott Walk*  
*Patricia Reeder*  
*Jeffrey Thomas*

HUNTINGDON 4

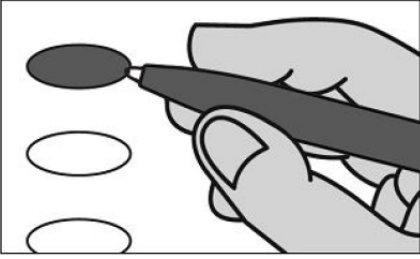
Typ:04 Seq:0021 Spl:01

# OFFICIAL REPUBLICAN GENERAL PRIMARY BALLOT

Huntingdon County

Commonwealth of Pennsylvania

MAY 19, 2026



**INSTRUCTIONS TO VOTER:**

1. To vote you must blacken the oval (●) completely. An oval (●) blackened to the left of the name of any candidate indicates a vote for that candidate.
2. To vote for a person whose name is not on the ballot, you must blacken the oval (●) to the left of the line provided, and write or print the name in the blank space provided for that purpose.
3. Use only a black pen.
4. If you make a mistake, DO NOT CORRECT. Ask for a new ballot.
5. Do not fold the ballot unless voting by absentee or mail-in ballot.
6. WARNING: If you receive an absentee or mail-in ballot and return your voted ballot by the deadline, you may not vote at your polling place on election day. If you are unable to return your voted absentee or mail-in ballot by the deadline, you may only vote a provisional ballot at your polling place on election day, unless you surrender your absentee or mail-in ballot and return envelope containing the Voter's Declaration to the judge of elections to be voided to vote by regular ballot.

**SENATOR IN THE GENERAL ASSEMBLY  
30TH DISTRICT  
VOTE FOR ONE**

- JUDY WARD  
BLAIR COUNTY
- \_\_\_\_\_  
Write-in

**REPRESENTATIVE IN THE GENERAL ASSEMBLY  
81ST DISTRICT  
VOTE FOR ONE**

- RICH IRVIN  
HUNTINGDON COUNTY
- \_\_\_\_\_  
Write-in

**MEMBER OF REPUBLICAN STATE COMMITTEE  
31st DISTRICT  
VOTE FOR NOT MORE THAN TWO,  
ELECTING 1 MALE AND 1 FEMALE**

- JULIA B WILT  
HUNTINGDON COUNTY FEMALE
- STEVEN CAROWICK JR  
HUNTINGDON COUNTY MALE
- \_\_\_\_\_  
Write-in
- \_\_\_\_\_  
Write-in

**GOVERNOR  
VOTE FOR ONE**

- STACY GARRITY  
BRADFORD COUNTY
- \_\_\_\_\_  
Write-in

**MEMBER OF REPUBLICAN COUNTY COMMITTEE  
2 YEAR TERM  
VOTE FOR NO MORE THAN TWO**

- \_\_\_\_\_  
Write-in
- \_\_\_\_\_  
Write-in

**LIEUTENANT GOVERNOR  
VOTE FOR ONE**

- JOHN VENTRE  
WESTMORELAND COUNTY
- JASON RICHEY  
ALLEGHENY COUNTY
- \_\_\_\_\_  
Write-in

**REPRESENTATIVE IN CONGRESS  
13TH DISTRICT  
VOTE FOR ONE**

- JOHN JOYCE  
BLAIR COUNTY
- \_\_\_\_\_  
Write-in

**HUNTINGDON COUNTY  
BOARD OF ELECTIONS**

*Scott Walk*  
*Patricia Reeder*  
*Jeffrey Thomas*

HUNTINGDON 5

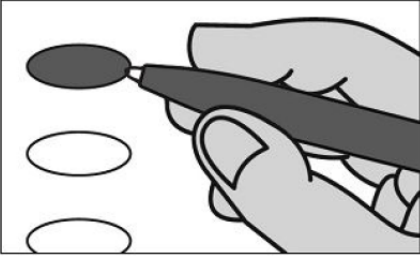
Typ:04 Seq:0022 Spl:01

# OFFICIAL REPUBLICAN GENERAL PRIMARY BALLOT

Huntingdon County

Commonwealth of Pennsylvania

MAY 19, 2026



**INSTRUCTIONS TO VOTER:**

1. To vote you must blacken the oval (●) completely. An oval (●) blackened to the left of the name of any candidate indicates a vote for that candidate.
2. To vote for a person whose name is not on the ballot, you must blacken the oval (●) to the left of the line provided, and write or print the name in the blank space provided for that purpose.
3. Use only a black pen.
4. If you make a mistake, DO NOT CORRECT. Ask for a new ballot.
5. Do not fold the ballot unless voting by absentee or mail-in ballot.
6. WARNING: If you receive an absentee or mail-in ballot and return your voted ballot by the deadline, you may not vote at your polling place on election day. If you are unable to return your voted absentee or mail-in ballot by the deadline, you may only vote a provisional ballot at your polling place on election day, unless you surrender your absentee or mail-in ballot and return envelope containing the Voter's Declaration to the judge of elections to be voided to vote by regular ballot.

**SENATOR IN THE GENERAL ASSEMBLY  
30TH DISTRICT  
VOTE FOR ONE**

- JUDY WARD  
BLAIR COUNTY
- \_\_\_\_\_  
Write-in

**REPRESENTATIVE IN THE GENERAL ASSEMBLY  
81ST DISTRICT  
VOTE FOR ONE**

- RICH IRVIN  
HUNTINGDON COUNTY
- \_\_\_\_\_  
Write-in

**MEMBER OF REPUBLICAN STATE COMMITTEE  
31st DISTRICT  
VOTE FOR NOT MORE THAN TWO,  
ELECTING 1 MALE AND 1 FEMALE**

- JULIA B WILT  
HUNTINGDON COUNTY FEMALE
- STEVEN CAROWICK JR  
HUNTINGDON COUNTY MALE
- \_\_\_\_\_  
Write-in
- \_\_\_\_\_  
Write-in

**GOVERNOR  
VOTE FOR ONE**

- STACY GARRITY  
BRADFORD COUNTY
- \_\_\_\_\_  
Write-in

**MEMBER OF REPUBLICAN COUNTY COMMITTEE  
2 YEAR TERM  
VOTE FOR NO MORE THAN TWO**

- DONALD E MALLIBAND
- \_\_\_\_\_  
Write-in
- \_\_\_\_\_  
Write-in

**LIEUTENANT GOVERNOR  
VOTE FOR ONE**

- JOHN VENTRE  
WESTMORELAND COUNTY
- JASON RICHEY  
ALLEGHENY COUNTY
- \_\_\_\_\_  
Write-in

**REPRESENTATIVE IN CONGRESS  
13TH DISTRICT  
VOTE FOR ONE**

- JOHN JOYCE  
BLAIR COUNTY
- \_\_\_\_\_  
Write-in

**HUNTINGDON COUNTY  
BOARD OF ELECTIONS**

*Scott Walk*  
*Patricia Reeder*  
*Jeffrey Thomas*

HUNTINGDON 6

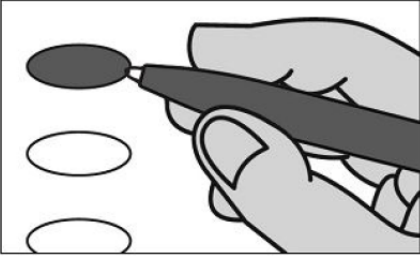
Typ:04 Seq:0023 Spl:01

# OFFICIAL REPUBLICAN GENERAL PRIMARY BALLOT

Huntingdon County

Commonwealth of Pennsylvania

MAY 19, 2026



**INSTRUCTIONS TO VOTER:**

1. To vote you must blacken the oval (●) completely. An oval (●) blackened to the left of the name of any candidate indicates a vote for that candidate.
2. To vote for a person whose name is not on the ballot, you must blacken the oval (●) to the left of the line provided, and write or print the name in the blank space provided for that purpose.
3. Use only a black pen.
4. If you make a mistake, DO NOT CORRECT. Ask for a new ballot.
5. Do not fold the ballot unless voting by absentee or mail-in ballot.
6. WARNING: If you receive an absentee or mail-in ballot and return your voted ballot by the deadline, you may not vote at your polling place on election day. If you are unable to return your voted absentee or mail-in ballot by the deadline, you may only vote a provisional ballot at your polling place on election day, unless you surrender your absentee or mail-in ballot and return envelope containing the Voter's Declaration to the judge of elections to be voided to vote by regular ballot.

**SENATOR IN THE GENERAL ASSEMBLY  
30TH DISTRICT  
VOTE FOR ONE**

- JUDY WARD  
BLAIR COUNTY
- \_\_\_\_\_  
Write-in

**REPRESENTATIVE IN THE GENERAL ASSEMBLY  
81ST DISTRICT  
VOTE FOR ONE**

- RICH IRVIN  
HUNTINGDON COUNTY
- \_\_\_\_\_  
Write-in

**MEMBER OF REPUBLICAN STATE COMMITTEE  
31st DISTRICT  
VOTE FOR NOT MORE THAN TWO,  
ELECTING 1 MALE AND 1 FEMALE**

- JULIA B WILT  
HUNTINGDON COUNTY FEMALE
- STEVEN CAROWICK JR  
HUNTINGDON COUNTY MALE
- \_\_\_\_\_  
Write-in
- \_\_\_\_\_  
Write-in

**GOVERNOR  
VOTE FOR ONE**

- STACY GARRITY  
BRADFORD COUNTY
- \_\_\_\_\_  
Write-in

**MEMBER OF REPUBLICAN COUNTY COMMITTEE  
2 YEAR TERM  
VOTE FOR NO MORE THAN TWO**

- SAMUEL J BRICKER
- LINDA J BRICKER
- \_\_\_\_\_  
Write-in
- \_\_\_\_\_  
Write-in

**LIEUTENANT GOVERNOR  
VOTE FOR ONE**

- JOHN VENTRE  
WESTMORELAND COUNTY
- JASON RICHEY  
ALLEGHENY COUNTY
- \_\_\_\_\_  
Write-in

**REPRESENTATIVE IN CONGRESS  
13TH DISTRICT  
VOTE FOR ONE**

- JOHN JOYCE  
BLAIR COUNTY
- \_\_\_\_\_  
Write-in

**HUNTINGDON COUNTY  
BOARD OF ELECTIONS**

*Scott Walk*  
*Patricia Reeder*  
*Jeffrey Thomas*

JACKSON

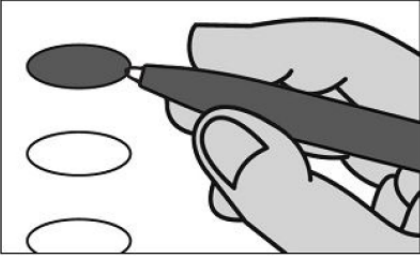
Typ:04 Seq:0024 Spl:01

# OFFICIAL REPUBLICAN GENERAL PRIMARY BALLOT

Huntingdon County

Commonwealth of Pennsylvania

MAY 19, 2026



**INSTRUCTIONS TO VOTER:**

1. To vote you must blacken the oval (●) completely. An oval (●) blackened to the left of the name of any candidate indicates a vote for that candidate.
2. To vote for a person whose name is not on the ballot, you must blacken the oval (●) to the left of the line provided, and write or print the name in the blank space provided for that purpose.
3. Use only a black pen.
4. If you make a mistake, DO NOT CORRECT. Ask for a new ballot.
5. Do not fold the ballot unless voting by absentee or mail-in ballot.
6. WARNING: If you receive an absentee or mail-in ballot and return your voted ballot by the deadline, you may not vote at your polling place on election day. If you are unable to return your voted absentee or mail-in ballot by the deadline, you may only vote a provisional ballot at your polling place on election day, unless you surrender your absentee or mail-in ballot and return envelope containing the Voter's Declaration to the judge of elections to be voided to vote by regular ballot.

**SENATOR IN THE GENERAL ASSEMBLY  
30TH DISTRICT  
VOTE FOR ONE**

- JUDY WARD  
BLAIR COUNTY
- \_\_\_\_\_  
Write-in

**REPRESENTATIVE IN THE GENERAL ASSEMBLY  
81ST DISTRICT  
VOTE FOR ONE**

- RICH IRVIN  
HUNTINGDON COUNTY
- \_\_\_\_\_  
Write-in

**MEMBER OF REPUBLICAN STATE COMMITTEE  
31st DISTRICT  
VOTE FOR NOT MORE THAN TWO,  
ELECTING 1 MALE AND 1 FEMALE**

- JULIA B WILT  
HUNTINGDON COUNTY FEMALE
- STEVEN CAROWICK JR  
HUNTINGDON COUNTY MALE
- \_\_\_\_\_  
Write-in
- \_\_\_\_\_  
Write-in

**GOVERNOR  
VOTE FOR ONE**

- STACY GARRITY  
BRADFORD COUNTY
- \_\_\_\_\_  
Write-in

**MEMBER OF REPUBLICAN COUNTY COMMITTEE  
2 YEAR TERM  
VOTE FOR NO MORE THAN TWO**

- TOM RITCHEY
- \_\_\_\_\_  
Write-in
- \_\_\_\_\_  
Write-in

**LIEUTENANT GOVERNOR  
VOTE FOR ONE**

- JOHN VENTRE  
WESTMORELAND COUNTY
- JASON RICHEY  
ALLEGHENY COUNTY
- \_\_\_\_\_  
Write-in

**REPRESENTATIVE IN CONGRESS  
13TH DISTRICT  
VOTE FOR ONE**

- JOHN JOYCE  
BLAIR COUNTY
- \_\_\_\_\_  
Write-in

**HUNTINGDON COUNTY  
BOARD OF ELECTIONS**

*Scott Walk*  
*Patricia Reeder*  
*Jeffrey Thomas*

JUNIATA

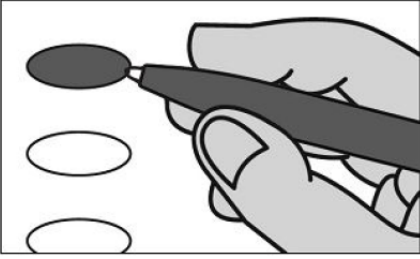
Typ:04 Seq:0025 Spl:01

# OFFICIAL REPUBLICAN GENERAL PRIMARY BALLOT

Huntingdon County

Commonwealth of Pennsylvania

MAY 19, 2026



**INSTRUCTIONS TO VOTER:**

1. To vote you must blacken the oval (●) completely. An oval (●) blackened to the left of the name of any candidate indicates a vote for that candidate.
2. To vote for a person whose name is not on the ballot, you must blacken the oval (●) to the left of the line provided, and write or print the name in the blank space provided for that purpose.
3. Use only a black pen.
4. If you make a mistake, DO NOT CORRECT. Ask for a new ballot.
5. Do not fold the ballot unless voting by absentee or mail-in ballot.
6. WARNING: If you receive an absentee or mail-in ballot and return your voted ballot by the deadline, you may not vote at your polling place on election day. If you are unable to return your voted absentee or mail-in ballot by the deadline, you may only vote a provisional ballot at your polling place on election day, unless you surrender your absentee or mail-in ballot and return envelope containing the Voter's Declaration to the judge of elections to be voided to vote by regular ballot.

**SENATOR IN THE GENERAL ASSEMBLY  
30TH DISTRICT  
VOTE FOR ONE**

- JUDY WARD  
BLAIR COUNTY
- \_\_\_\_\_  
Write-in

**REPRESENTATIVE IN THE GENERAL ASSEMBLY  
81ST DISTRICT  
VOTE FOR ONE**

- RICH IRVIN  
HUNTINGDON COUNTY
- \_\_\_\_\_  
Write-in

**MEMBER OF REPUBLICAN STATE COMMITTEE  
31st DISTRICT  
VOTE FOR NOT MORE THAN TWO,  
ELECTING 1 MALE AND 1 FEMALE**

- JULIA B WILT  
HUNTINGDON COUNTY FEMALE
- STEVEN CAROWICK JR  
HUNTINGDON COUNTY MALE
- \_\_\_\_\_  
Write-in
- \_\_\_\_\_  
Write-in

**GOVERNOR  
VOTE FOR ONE**

- STACY GARRITY  
BRADFORD COUNTY
- \_\_\_\_\_  
Write-in

**MEMBER OF REPUBLICAN COUNTY COMMITTEE  
2 YEAR TERM  
VOTE FOR NO MORE THAN TWO**

- \_\_\_\_\_  
Write-in
- \_\_\_\_\_  
Write-in

**LIEUTENANT GOVERNOR  
VOTE FOR ONE**

- JOHN VENTRE  
WESTMORELAND COUNTY
- JASON RICHEY  
ALLEGHENY COUNTY
- \_\_\_\_\_  
Write-in

**REPRESENTATIVE IN CONGRESS  
13TH DISTRICT  
VOTE FOR ONE**

- JOHN JOYCE  
BLAIR COUNTY
- \_\_\_\_\_  
Write-in

**HUNTINGDON COUNTY  
BOARD OF ELECTIONS**

*Scott Walk*  
*Patricia Reeder*  
*Jeffrey Thomas*

LINCOLN

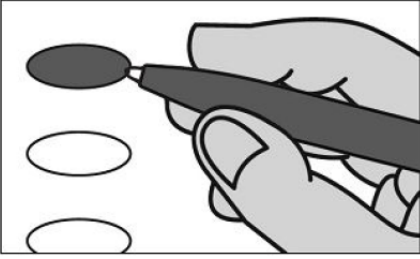
Typ:04 Seq:0026 Spl:01

# OFFICIAL REPUBLICAN GENERAL PRIMARY BALLOT

Huntingdon County

Commonwealth of Pennsylvania

MAY 19, 2026



**INSTRUCTIONS TO VOTER:**

1. To vote you must blacken the oval (●) completely. An oval (●) blackened to the left of the name of any candidate indicates a vote for that candidate.
2. To vote for a person whose name is not on the ballot, you must blacken the oval (●) to the left of the line provided, and write or print the name in the blank space provided for that purpose.
3. Use only a black pen.
4. If you make a mistake, DO NOT CORRECT. Ask for a new ballot.
5. Do not fold the ballot unless voting by absentee or mail-in ballot.
6. WARNING: If you receive an absentee or mail-in ballot and return your voted ballot by the deadline, you may not vote at your polling place on election day. If you are unable to return your voted absentee or mail-in ballot by the deadline, you may only vote a provisional ballot at your polling place on election day, unless you surrender your absentee or mail-in ballot and return envelope containing the Voter's Declaration to the judge of elections to be voided to vote by regular ballot.

**SENATOR IN THE GENERAL ASSEMBLY  
30TH DISTRICT  
VOTE FOR ONE**

- JUDY WARD  
BLAIR COUNTY
- \_\_\_\_\_  
Write-in

**REPRESENTATIVE IN THE GENERAL ASSEMBLY  
81ST DISTRICT  
VOTE FOR ONE**

- RICH IRVIN  
HUNTINGDON COUNTY
- \_\_\_\_\_  
Write-in

**MEMBER OF REPUBLICAN STATE COMMITTEE  
31st DISTRICT  
VOTE FOR NOT MORE THAN TWO,  
ELECTING 1 MALE AND 1 FEMALE**

- JULIA B WILT  
HUNTINGDON COUNTY FEMALE
- STEVEN CAROWICK JR  
HUNTINGDON COUNTY MALE
- \_\_\_\_\_  
Write-in
- \_\_\_\_\_  
Write-in

**GOVERNOR  
VOTE FOR ONE**

- STACY GARRITY  
BRADFORD COUNTY
- \_\_\_\_\_  
Write-in

**MEMBER OF REPUBLICAN COUNTY COMMITTEE  
2 YEAR TERM  
VOTE FOR NO MORE THAN TWO**

- \_\_\_\_\_  
Write-in
- \_\_\_\_\_  
Write-in

**LIEUTENANT GOVERNOR  
VOTE FOR ONE**

- JOHN VENTRE  
WESTMORELAND COUNTY
- JASON RICHEY  
ALLEGHENY COUNTY
- \_\_\_\_\_  
Write-in

**REPRESENTATIVE IN CONGRESS  
13TH DISTRICT  
VOTE FOR ONE**

- JOHN JOYCE  
BLAIR COUNTY
- \_\_\_\_\_  
Write-in

**HUNTINGDON COUNTY  
BOARD OF ELECTIONS**

*Scott Walk*  
*Patricia Reeder*  
*Jeffrey Thomas*

LOGAN

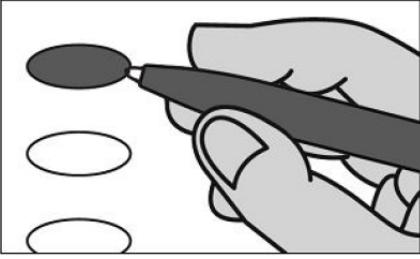
Typ:04 Seq:0027 Spl:01

# OFFICIAL REPUBLICAN GENERAL PRIMARY BALLOT

Huntingdon County

Commonwealth of Pennsylvania

MAY 19, 2026



### INSTRUCTIONS TO VOTER:

1. To vote you must blacken the oval (●) completely. An oval (●) blackened to the left of the name of any candidate indicates a vote for that candidate.
2. To vote for a person whose name is not on the ballot, you must blacken the oval (●) to the left of the line provided, and write or print the name in the blank space provided for that purpose.
3. Use only a black pen.
4. If you make a mistake, DO NOT CORRECT. Ask for a new ballot.
5. Do not fold the ballot unless voting by absentee or mail-in ballot.
6. WARNING: If you receive an absentee or mail-in ballot and return your voted ballot by the deadline, you may not vote at your polling place on election day. If you are unable to return your voted absentee or mail-in ballot by the deadline, you may only vote a provisional ballot at your polling place on election day, unless you surrender your absentee or mail-in ballot and return envelope containing the Voter's Declaration to the judge of elections to be voided to vote by regular ballot.

### SENATOR IN THE GENERAL ASSEMBLY 30TH DISTRICT VOTE FOR ONE

- JUDY WARD  
BLAIR COUNTY
- \_\_\_\_\_  
Write-in

### REPRESENTATIVE IN THE GENERAL ASSEMBLY 81ST DISTRICT VOTE FOR ONE

- RICH IRVIN  
HUNTINGDON COUNTY
- \_\_\_\_\_  
Write-in

### MEMBER OF REPUBLICAN STATE COMMITTEE 31st DISTRICT VOTE FOR NOT MORE THAN TWO, ELECTING 1 MALE AND 1 FEMALE

- JULIA B WILT  
HUNTINGDON COUNTY FEMALE
- STEVEN CAROWICK JR  
HUNTINGDON COUNTY MALE
- \_\_\_\_\_  
Write-in
- \_\_\_\_\_  
Write-in

### GOVERNOR VOTE FOR ONE

- STACY GARRITY  
BRADFORD COUNTY
- \_\_\_\_\_  
Write-in

### MEMBER OF REPUBLICAN COUNTY COMMITTEE 2 YEAR TERM VOTE FOR NO MORE THAN TWO

- \_\_\_\_\_  
Write-in
- \_\_\_\_\_  
Write-in

### LIEUTENANT GOVERNOR VOTE FOR ONE

- JOHN VENTRE  
WESTMORELAND COUNTY
- JASON RICHEY  
ALLEGHENY COUNTY
- \_\_\_\_\_  
Write-in

### REPRESENTATIVE IN CONGRESS 13TH DISTRICT VOTE FOR ONE

- JOHN JOYCE  
BLAIR COUNTY
- \_\_\_\_\_  
Write-in

### HUNTINGDON COUNTY BOARD OF ELECTIONS

*Scott Walls*  
*Patricia Reeder*  
*Jeffrey Thomas*

MAPLETON

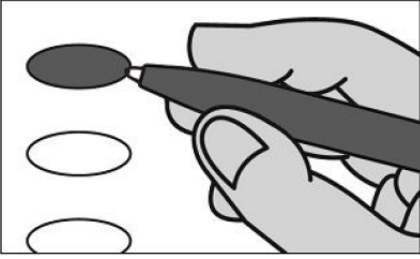
Typ:04 Seq:0028 Spl:01

# OFFICIAL REPUBLICAN GENERAL PRIMARY BALLOT

Huntingdon County

Commonwealth of Pennsylvania

MAY 19, 2026



**INSTRUCTIONS TO VOTER:**

1. To vote you must blacken the oval (●) completely. An oval (●) blackened to the left of the name of any candidate indicates a vote for that candidate.
2. To vote for a person whose name is not on the ballot, you must blacken the oval (●) to the left of the line provided, and write or print the name in the blank space provided for that purpose.
3. Use only a black pen.
4. If you make a mistake, DO NOT CORRECT. Ask for a new ballot.
5. Do not fold the ballot unless voting by absentee or mail-in ballot.
6. WARNING: If you receive an absentee or mail-in ballot and return your voted ballot by the deadline, you may not vote at your polling place on election day. If you are unable to return your voted absentee or mail-in ballot by the deadline, you may only vote a provisional ballot at your polling place on election day, unless you surrender your absentee or mail-in ballot and return envelope containing the Voter's Declaration to the judge of elections to be voided to vote by regular ballot.

**SENATOR IN THE GENERAL ASSEMBLY  
30TH DISTRICT  
VOTE FOR ONE**

- JUDY WARD  
BLAIR COUNTY
- \_\_\_\_\_  
Write-in

**REPRESENTATIVE IN THE GENERAL ASSEMBLY  
81ST DISTRICT  
VOTE FOR ONE**

- RICH IRVIN  
HUNTINGDON COUNTY
- \_\_\_\_\_  
Write-in

**MEMBER OF REPUBLICAN STATE COMMITTEE  
31st DISTRICT  
VOTE FOR NOT MORE THAN TWO,  
ELECTING 1 MALE AND 1 FEMALE**

- JULIA B WILT  
HUNTINGDON COUNTY FEMALE
- STEVEN CAROWICK JR  
HUNTINGDON COUNTY MALE
- \_\_\_\_\_  
Write-in
- \_\_\_\_\_  
Write-in

**GOVERNOR  
VOTE FOR ONE**

- STACY GARRITY  
BRADFORD COUNTY
- \_\_\_\_\_  
Write-in

**MEMBER OF REPUBLICAN COUNTY COMMITTEE  
2 YEAR TERM  
VOTE FOR NO MORE THAN TWO**

- \_\_\_\_\_  
Write-in
- \_\_\_\_\_  
Write-in

**LIEUTENANT GOVERNOR  
VOTE FOR ONE**

- JOHN VENTRE  
WESTMORELAND COUNTY
- JASON RICHEY  
ALLEGHENY COUNTY
- \_\_\_\_\_  
Write-in

**REPRESENTATIVE IN CONGRESS  
13TH DISTRICT  
VOTE FOR ONE**

- JOHN JOYCE  
BLAIR COUNTY
- \_\_\_\_\_  
Write-in

**HUNTINGDON COUNTY  
BOARD OF ELECTIONS**

*Scott Walk*  
*Patricia Reeder*  
*Jeffrey Thomas*

MARKLESBURG

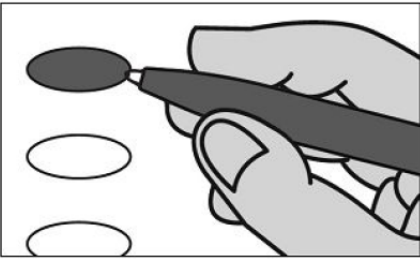
Typ:04 Seq:0029 Spl:01

# OFFICIAL REPUBLICAN GENERAL PRIMARY BALLOT

Huntingdon County

Commonwealth of Pennsylvania

MAY 19, 2026



**INSTRUCTIONS TO VOTER:**

1. To vote you must blacken the oval (●) completely. An oval (●) blackened to the left of the name of any candidate indicates a vote for that candidate.
2. To vote for a person whose name is not on the ballot, you must blacken the oval (●) to the left of the line provided, and write or print the name in the blank space provided for that purpose.
3. Use only a black pen.
4. If you make a mistake, DO NOT CORRECT. Ask for a new ballot.
5. Do not fold the ballot unless voting by absentee or mail-in ballot.
6. WARNING: If you receive an absentee or mail-in ballot and return your voted ballot by the deadline, you may not vote at your polling place on election day. If you are unable to return your voted absentee or mail-in ballot by the deadline, you may only vote a provisional ballot at your polling place on election day, unless you surrender your absentee or mail-in ballot and return envelope containing the Voter's Declaration to the judge of elections to be voided to vote by regular ballot.

**SENATOR IN THE GENERAL ASSEMBLY  
30TH DISTRICT  
VOTE FOR ONE**

- JUDY WARD  
BLAIR COUNTY
- \_\_\_\_\_  
Write-in

**REPRESENTATIVE IN THE GENERAL ASSEMBLY  
81ST DISTRICT  
VOTE FOR ONE**

- RICH IRVIN  
HUNTINGDON COUNTY
- \_\_\_\_\_  
Write-in

**MEMBER OF REPUBLICAN STATE COMMITTEE  
31st DISTRICT  
VOTE FOR NOT MORE THAN TWO,  
ELECTING 1 MALE AND 1 FEMALE**

- JULIA B WILT  
HUNTINGDON COUNTY FEMALE
- STEVEN CAROWICK JR  
HUNTINGDON COUNTY MALE
- \_\_\_\_\_  
Write-in
- \_\_\_\_\_  
Write-in

**GOVERNOR  
VOTE FOR ONE**

- STACY GARRITY  
BRADFORD COUNTY
- \_\_\_\_\_  
Write-in

**MEMBER OF REPUBLICAN COUNTY COMMITTEE  
2 YEAR TERM  
VOTE FOR NO MORE THAN TWO**

- \_\_\_\_\_  
Write-in
- \_\_\_\_\_  
Write-in

**LIEUTENANT GOVERNOR  
VOTE FOR ONE**

- JOHN VENTRE  
WESTMORELAND COUNTY
- JASON RICHEY  
ALLEGHENY COUNTY
- \_\_\_\_\_  
Write-in

**REPRESENTATIVE IN CONGRESS  
13TH DISTRICT  
VOTE FOR ONE**

- JOHN JOYCE  
BLAIR COUNTY
- \_\_\_\_\_  
Write-in

**HUNTINGDON COUNTY  
BOARD OF ELECTIONS**

*Scott Walk*  
*Patricia Reeder*  
*Jeffrey Thomas*

MILL CREEK

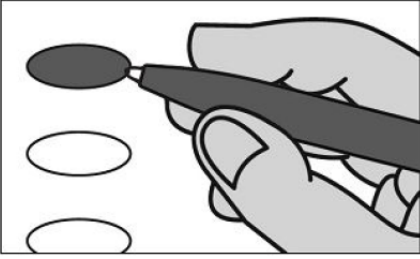
Typ:04 Seq:0030 Spl:01

# OFFICIAL REPUBLICAN GENERAL PRIMARY BALLOT

Huntingdon County

Commonwealth of Pennsylvania

MAY 19, 2026



**INSTRUCTIONS TO VOTER:**

1. To vote you must blacken the oval (●) completely. An oval (●) blackened to the left of the name of any candidate indicates a vote for that candidate.
2. To vote for a person whose name is not on the ballot, you must blacken the oval (●) to the left of the line provided, and write or print the name in the blank space provided for that purpose.
3. Use only a black pen.
4. If you make a mistake, DO NOT CORRECT. Ask for a new ballot.
5. Do not fold the ballot unless voting by absentee or mail-in ballot.
6. WARNING: If you receive an absentee or mail-in ballot and return your voted ballot by the deadline, you may not vote at your polling place on election day. If you are unable to return your voted absentee or mail-in ballot by the deadline, you may only vote a provisional ballot at your polling place on election day, unless you surrender your absentee or mail-in ballot and return envelope containing the Voter's Declaration to the judge of elections to be voided to vote by regular ballot.

**SENATOR IN THE GENERAL ASSEMBLY  
30TH DISTRICT  
VOTE FOR ONE**

- JUDY WARD  
BLAIR COUNTY
- \_\_\_\_\_  
Write-in

**REPRESENTATIVE IN THE GENERAL ASSEMBLY  
81ST DISTRICT  
VOTE FOR ONE**

- RICH IRVIN  
HUNTINGDON COUNTY
- \_\_\_\_\_  
Write-in

**MEMBER OF REPUBLICAN STATE COMMITTEE  
31st DISTRICT  
VOTE FOR NOT MORE THAN TWO,  
ELECTING 1 MALE AND 1 FEMALE**

- JULIA B WILT  
HUNTINGDON COUNTY FEMALE
- STEVEN CAROWICK JR  
HUNTINGDON COUNTY MALE
- \_\_\_\_\_  
Write-in
- \_\_\_\_\_  
Write-in

**GOVERNOR  
VOTE FOR ONE**

- STACY GARRITY  
BRADFORD COUNTY
- \_\_\_\_\_  
Write-in

**MEMBER OF REPUBLICAN COUNTY COMMITTEE  
2 YEAR TERM  
VOTE FOR NO MORE THAN TWO**

- \_\_\_\_\_  
Write-in
- \_\_\_\_\_  
Write-in

**LIEUTENANT GOVERNOR  
VOTE FOR ONE**

- JOHN VENTRE  
WESTMORELAND COUNTY
- JASON RICHEY  
ALLEGHENY COUNTY
- \_\_\_\_\_  
Write-in

**REPRESENTATIVE IN CONGRESS  
13TH DISTRICT  
VOTE FOR ONE**

- JOHN JOYCE  
BLAIR COUNTY
- \_\_\_\_\_  
Write-in

**HUNTINGDON COUNTY  
BOARD OF ELECTIONS**

*Scott Walk*  
*Patricia Reeder*  
*Jeffrey Thomas*

MILLER

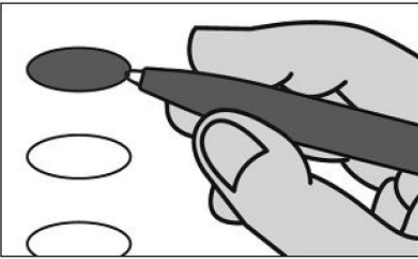
Typ:04 Seq:0031 Spl:01

# OFFICIAL REPUBLICAN GENERAL PRIMARY BALLOT

Huntingdon County

Commonwealth of Pennsylvania

MAY 19, 2026



**INSTRUCTIONS TO VOTER:**

1. To vote you must blacken the oval (●) completely. An oval (●) blackened to the left of the name of any candidate indicates a vote for that candidate.
2. To vote for a person whose name is not on the ballot, you must blacken the oval (●) to the left of the line provided, and write or print the name in the blank space provided for that purpose.
3. Use only a black pen.
4. If you make a mistake, DO NOT CORRECT. Ask for a new ballot.
5. Do not fold the ballot unless voting by absentee or mail-in ballot.
6. WARNING: If you receive an absentee or mail-in ballot and return your voted ballot by the deadline, you may not vote at your polling place on election day. If you are unable to return your voted absentee or mail-in ballot by the deadline, you may only vote a provisional ballot at your polling place on election day, unless you surrender your absentee or mail-in ballot and return envelope containing the Voter's Declaration to the judge of elections to be voided to vote by regular ballot.

**SENATOR IN THE GENERAL ASSEMBLY  
30TH DISTRICT  
VOTE FOR ONE**

- JUDY WARD  
BLAIR COUNTY
- \_\_\_\_\_  
Write-in

**REPRESENTATIVE IN THE GENERAL ASSEMBLY  
81ST DISTRICT  
VOTE FOR ONE**

- RICH IRVIN  
HUNTINGDON COUNTY
- \_\_\_\_\_  
Write-in

**MEMBER OF REPUBLICAN STATE COMMITTEE  
31st DISTRICT  
VOTE FOR NOT MORE THAN TWO,  
ELECTING 1 MALE AND 1 FEMALE**

- JULIA B WILT  
HUNTINGDON COUNTY FEMALE
- STEVEN CAROWICK JR  
HUNTINGDON COUNTY MALE
- \_\_\_\_\_  
Write-in
- \_\_\_\_\_  
Write-in

**GOVERNOR  
VOTE FOR ONE**

- STACY GARRITY  
BRADFORD COUNTY
- \_\_\_\_\_  
Write-in

**MEMBER OF REPUBLICAN COUNTY COMMITTEE  
2 YEAR TERM  
VOTE FOR NO MORE THAN TWO**

- \_\_\_\_\_  
Write-in
- \_\_\_\_\_  
Write-in

**LIEUTENANT GOVERNOR  
VOTE FOR ONE**

- JOHN VENTRE  
WESTMORELAND COUNTY
- JASON RICHEY  
ALLEGHENY COUNTY
- \_\_\_\_\_  
Write-in

**REPRESENTATIVE IN CONGRESS  
13TH DISTRICT  
VOTE FOR ONE**

- JOHN JOYCE  
BLAIR COUNTY
- \_\_\_\_\_  
Write-in

**HUNTINGDON COUNTY  
BOARD OF ELECTIONS**

*Scott Walk*  
*Patricia Reeder*  
*Jeffrey Thomas*

MORRIS

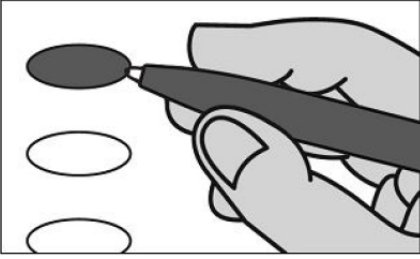
Typ:04 Seq:0032 Spl:01

# OFFICIAL REPUBLICAN GENERAL PRIMARY BALLOT

Huntingdon County

Commonwealth of Pennsylvania

MAY 19, 2026



**INSTRUCTIONS TO VOTER:**

1. To vote you must blacken the oval (●) completely. An oval (●) blackened to the left of the name of any candidate indicates a vote for that candidate.
2. To vote for a person whose name is not on the ballot, you must blacken the oval (●) to the left of the line provided, and write or print the name in the blank space provided for that purpose.
3. Use only a black pen.
4. If you make a mistake, DO NOT CORRECT. Ask for a new ballot.
5. Do not fold the ballot unless voting by absentee or mail-in ballot.
6. WARNING: If you receive an absentee or mail-in ballot and return your voted ballot by the deadline, you may not vote at your polling place on election day. If you are unable to return your voted absentee or mail-in ballot by the deadline, you may only vote a provisional ballot at your polling place on election day, unless you surrender your absentee or mail-in ballot and return envelope containing the Voter's Declaration to the judge of elections to be voided to vote by regular ballot.

**SENATOR IN THE GENERAL ASSEMBLY  
30TH DISTRICT  
VOTE FOR ONE**

- JUDY WARD  
BLAIR COUNTY
- \_\_\_\_\_  
Write-in

**REPRESENTATIVE IN THE GENERAL ASSEMBLY  
81ST DISTRICT  
VOTE FOR ONE**

- RICH IRVIN  
HUNTINGDON COUNTY
- \_\_\_\_\_  
Write-in

**MEMBER OF REPUBLICAN STATE COMMITTEE  
31st DISTRICT  
VOTE FOR NOT MORE THAN TWO,  
ELECTING 1 MALE AND 1 FEMALE**

- JULIA B WILT  
HUNTINGDON COUNTY FEMALE
- STEVEN CAROWICK JR  
HUNTINGDON COUNTY MALE
- \_\_\_\_\_  
Write-in
- \_\_\_\_\_  
Write-in

**GOVERNOR  
VOTE FOR ONE**

- STACY GARRITY  
BRADFORD COUNTY
- \_\_\_\_\_  
Write-in

**MEMBER OF REPUBLICAN COUNTY COMMITTEE  
2 YEAR TERM  
VOTE FOR NO MORE THAN TWO**

- \_\_\_\_\_  
Write-in
- \_\_\_\_\_  
Write-in

**LIEUTENANT GOVERNOR  
VOTE FOR ONE**

- JOHN VENTRE  
WESTMORELAND COUNTY
- JASON RICHEY  
ALLEGHENY COUNTY
- \_\_\_\_\_  
Write-in

**REPRESENTATIVE IN CONGRESS  
13TH DISTRICT  
VOTE FOR ONE**

- JOHN JOYCE  
BLAIR COUNTY
- \_\_\_\_\_  
Write-in

**HUNTINGDON COUNTY  
BOARD OF ELECTIONS**

*Scott Walk*  
*Patricia Reeder*  
*Jeffrey Thomas*

MOUNT UNION 1

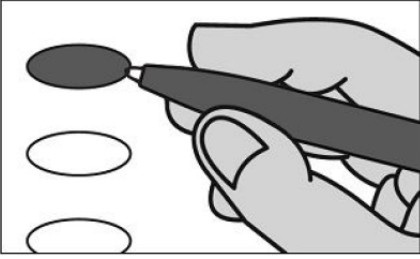
Typ:04 Seq:0033 Spl:01

# OFFICIAL REPUBLICAN GENERAL PRIMARY BALLOT

Huntingdon County

Commonwealth of Pennsylvania

MAY 19, 2026



**INSTRUCTIONS TO VOTER:**

1. To vote you must blacken the oval (●) completely. An oval (●) blackened to the left of the name of any candidate indicates a vote for that candidate.
2. To vote for a person whose name is not on the ballot, you must blacken the oval (●) to the left of the line provided, and write or print the name in the blank space provided for that purpose.
3. Use only a black pen.
4. If you make a mistake, DO NOT CORRECT. Ask for a new ballot.
5. Do not fold the ballot unless voting by absentee or mail-in ballot.
6. WARNING: If you receive an absentee or mail-in ballot and return your voted ballot by the deadline, you may not vote at your polling place on election day. If you are unable to return your voted absentee or mail-in ballot by the deadline, you may only vote a provisional ballot at your polling place on election day, unless you surrender your absentee or mail-in ballot and return envelope containing the Voter's Declaration to the judge of elections to be voided to vote by regular ballot.

**SENATOR IN THE GENERAL ASSEMBLY  
30TH DISTRICT  
VOTE FOR ONE**

- JUDY WARD  
BLAIR COUNTY
- \_\_\_\_\_  
Write-in

**REPRESENTATIVE IN THE GENERAL ASSEMBLY  
81ST DISTRICT  
VOTE FOR ONE**

- RICH IRVIN  
HUNTINGDON COUNTY
- \_\_\_\_\_  
Write-in

**MEMBER OF REPUBLICAN STATE COMMITTEE  
31st DISTRICT  
VOTE FOR NOT MORE THAN TWO,  
ELECTING 1 MALE AND 1 FEMALE**

- JULIA B WILT  
HUNTINGDON COUNTY FEMALE
- STEVEN CAROWICK JR  
HUNTINGDON COUNTY MALE
- \_\_\_\_\_  
Write-in
- \_\_\_\_\_  
Write-in

**GOVERNOR  
VOTE FOR ONE**

- STACY GARRITY  
BRADFORD COUNTY
- \_\_\_\_\_  
Write-in

**MEMBER OF REPUBLICAN COUNTY COMMITTEE  
2 YEAR TERM  
VOTE FOR NO MORE THAN TWO**

- \_\_\_\_\_  
Write-in
- \_\_\_\_\_  
Write-in

**LIEUTENANT GOVERNOR  
VOTE FOR ONE**

- JOHN VENTRE  
WESTMORELAND COUNTY
- JASON RICHEY  
ALLEGHENY COUNTY
- \_\_\_\_\_  
Write-in

**REPRESENTATIVE IN CONGRESS  
13TH DISTRICT  
VOTE FOR ONE**

- JOHN JOYCE  
BLAIR COUNTY
- \_\_\_\_\_  
Write-in

**HUNTINGDON COUNTY  
BOARD OF ELECTIONS**

*Scott Walk*  
*Patricia Reeder*  
*Jeffrey Thomas*

MOUNT UNION 2

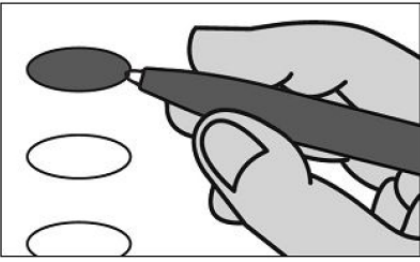
Typ:04 Seq:0034 Spl:01

# OFFICIAL REPUBLICAN GENERAL PRIMARY BALLOT

Huntingdon County

Commonwealth of Pennsylvania

MAY 19, 2026



### INSTRUCTIONS TO VOTER:

1. To vote you must blacken the oval (●) completely. An oval (●) blackened to the left of the name of any candidate indicates a vote for that candidate.
2. To vote for a person whose name is not on the ballot, you must blacken the oval (●) to the left of the line provided, and write or print the name in the blank space provided for that purpose.
3. Use only a black pen.
4. If you make a mistake, DO NOT CORRECT. Ask for a new ballot.
5. Do not fold the ballot unless voting by absentee or mail-in ballot.
6. WARNING: If you receive an absentee or mail-in ballot and return your voted ballot by the deadline, you may not vote at your polling place on election day. If you are unable to return your voted absentee or mail-in ballot by the deadline, you may only vote a provisional ballot at your polling place on election day, unless you surrender your absentee or mail-in ballot and return envelope containing the Voter's Declaration to the judge of elections to be voided to vote by regular ballot.

### SENATOR IN THE GENERAL ASSEMBLY 30TH DISTRICT VOTE FOR ONE

- JUDY WARD  
BLAIR COUNTY
- \_\_\_\_\_  
Write-in

### REPRESENTATIVE IN THE GENERAL ASSEMBLY 81ST DISTRICT VOTE FOR ONE

- RICH IRVIN  
HUNTINGDON COUNTY
- \_\_\_\_\_  
Write-in

### MEMBER OF REPUBLICAN STATE COMMITTEE 31st DISTRICT VOTE FOR NOT MORE THAN TWO, ELECTING 1 MALE AND 1 FEMALE

- JULIA B WILT  
HUNTINGDON COUNTY FEMALE
- STEVEN CAROWICK JR  
HUNTINGDON COUNTY MALE
- \_\_\_\_\_  
Write-in
- \_\_\_\_\_  
Write-in

### GOVERNOR VOTE FOR ONE

- STACY GARRITY  
BRADFORD COUNTY
- \_\_\_\_\_  
Write-in

### MEMBER OF REPUBLICAN COUNTY COMMITTEE 2 YEAR TERM VOTE FOR NO MORE THAN TWO

- ANDREA SMITH
- DAVE SMITH
- \_\_\_\_\_  
Write-in
- \_\_\_\_\_  
Write-in

### LIEUTENANT GOVERNOR VOTE FOR ONE

- JOHN VENTRE  
WESTMORELAND COUNTY
- JASON RICHEY  
ALLEGHENY COUNTY
- \_\_\_\_\_  
Write-in

### REPRESENTATIVE IN CONGRESS 13TH DISTRICT VOTE FOR ONE

- JOHN JOYCE  
BLAIR COUNTY
- \_\_\_\_\_  
Write-in

### HUNTINGDON COUNTY BOARD OF ELECTIONS

*Scott Walk*  
*Patricia Reeder*  
*Jeffrey Thomas*

MOUNT UNION 3

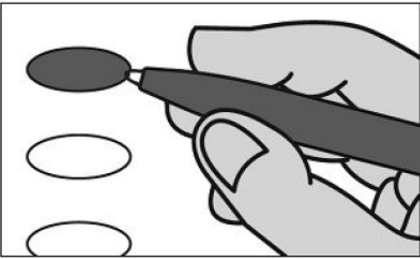
Typ:04 Seq:0035 Spl:01

# OFFICIAL REPUBLICAN GENERAL PRIMARY BALLOT

Huntingdon County

Commonwealth of Pennsylvania

MAY 19, 2026



### INSTRUCTIONS TO VOTER:

1. To vote you must blacken the oval (●) completely. An oval (●) blackened to the left of the name of any candidate indicates a vote for that candidate.
2. To vote for a person whose name is not on the ballot, you must blacken the oval (●) to the left of the line provided, and write or print the name in the blank space provided for that purpose.
3. Use only a black pen.
4. If you make a mistake, DO NOT CORRECT. Ask for a new ballot.
5. Do not fold the ballot unless voting by absentee or mail-in ballot.
6. WARNING: If you receive an absentee or mail-in ballot and return your voted ballot by the deadline, you may not vote at your polling place on election day. If you are unable to return your voted absentee or mail-in ballot by the deadline, you may only vote a provisional ballot at your polling place on election day, unless you surrender your absentee or mail-in ballot and return envelope containing the Voter's Declaration to the judge of elections to be voided to vote by regular ballot.

### SENATOR IN THE GENERAL ASSEMBLY 30TH DISTRICT VOTE FOR ONE

- JUDY WARD  
BLAIR COUNTY
- \_\_\_\_\_  
Write-in

### REPRESENTATIVE IN THE GENERAL ASSEMBLY 81ST DISTRICT VOTE FOR ONE

- RICH IRVIN  
HUNTINGDON COUNTY
- \_\_\_\_\_  
Write-in

### MEMBER OF REPUBLICAN STATE COMMITTEE 31st DISTRICT VOTE FOR NOT MORE THAN TWO, ELECTING 1 MALE AND 1 FEMALE

- JULIA B WILT  
HUNTINGDON COUNTY FEMALE
- STEVEN CAROWICK JR  
HUNTINGDON COUNTY MALE
- \_\_\_\_\_  
Write-in
- \_\_\_\_\_  
Write-in

### GOVERNOR VOTE FOR ONE

- STACY GARRITY  
BRADFORD COUNTY
- \_\_\_\_\_  
Write-in

### MEMBER OF REPUBLICAN COUNTY COMMITTEE 2 YEAR TERM VOTE FOR NO MORE THAN TWO

- AIDEN CONESE
- \_\_\_\_\_  
Write-in
- \_\_\_\_\_  
Write-in

### LIEUTENANT GOVERNOR VOTE FOR ONE

- JOHN VENTRE  
WESTMORELAND COUNTY
- JASON RICHEY  
ALLEGHENY COUNTY
- \_\_\_\_\_  
Write-in

### REPRESENTATIVE IN CONGRESS 13TH DISTRICT VOTE FOR ONE

- JOHN JOYCE  
BLAIR COUNTY
- \_\_\_\_\_  
Write-in

### HUNTINGDON COUNTY BOARD OF ELECTIONS

*Scott Walk*  
*Patricia Reeder*  
*Jeffrey Thomas*

ONEIDA

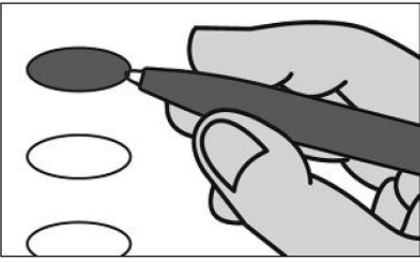
Typ:04 Seq:0036 Spl:01

# OFFICIAL REPUBLICAN GENERAL PRIMARY BALLOT

Huntingdon County

Commonwealth of Pennsylvania

MAY 19, 2026



**INSTRUCTIONS TO VOTER:**

1. To vote you must blacken the oval (●) completely. An oval (●) blackened to the left of the name of any candidate indicates a vote for that candidate.
2. To vote for a person whose name is not on the ballot, you must blacken the oval (●) to the left of the line provided, and write or print the name in the blank space provided for that purpose.
3. Use only a black pen.
4. If you make a mistake, DO NOT CORRECT. Ask for a new ballot.
5. Do not fold the ballot unless voting by absentee or mail-in ballot.
6. WARNING: If you receive an absentee or mail-in ballot and return your voted ballot by the deadline, you may not vote at your polling place on election day. If you are unable to return your voted absentee or mail-in ballot by the deadline, you may only vote a provisional ballot at your polling place on election day, unless you surrender your absentee or mail-in ballot and return envelope containing the Voter's Declaration to the judge of elections to be voided to vote by regular ballot.

**SENATOR IN THE GENERAL ASSEMBLY  
30TH DISTRICT  
VOTE FOR ONE**

- JUDY WARD  
BLAIR COUNTY
- \_\_\_\_\_  
Write-in

**REPRESENTATIVE IN THE GENERAL ASSEMBLY  
81ST DISTRICT  
VOTE FOR ONE**

- RICH IRVIN  
HUNTINGDON COUNTY
- \_\_\_\_\_  
Write-in

**MEMBER OF REPUBLICAN STATE COMMITTEE  
31st DISTRICT  
VOTE FOR NOT MORE THAN TWO,  
ELECTING 1 MALE AND 1 FEMALE**

- JULIA B WILT  
HUNTINGDON COUNTY FEMALE
- STEVEN CAROWICK JR  
HUNTINGDON COUNTY MALE
- \_\_\_\_\_  
Write-in
- \_\_\_\_\_  
Write-in

**GOVERNOR  
VOTE FOR ONE**

- STACY GARRITY  
BRADFORD COUNTY
- \_\_\_\_\_  
Write-in

**MEMBER OF REPUBLICAN COUNTY COMMITTEE  
2 YEAR TERM  
VOTE FOR NO MORE THAN TWO**

- \_\_\_\_\_  
Write-in
- \_\_\_\_\_  
Write-in

**LIEUTENANT GOVERNOR  
VOTE FOR ONE**

- JOHN VENTRE  
WESTMORELAND COUNTY
- JASON RICHEY  
ALLEGHENY COUNTY
- \_\_\_\_\_  
Write-in

**REPRESENTATIVE IN CONGRESS  
13TH DISTRICT  
VOTE FOR ONE**

- JOHN JOYCE  
BLAIR COUNTY
- \_\_\_\_\_  
Write-in

**HUNTINGDON COUNTY  
BOARD OF ELECTIONS**

*Scott Walk*  
*Patricia Reeder*  
*Jeffrey Thomas*

ORBISONIA

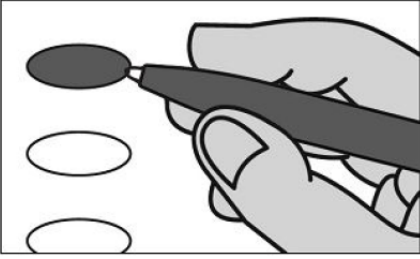
Typ:04 Seq:0037 Spl:01

# OFFICIAL REPUBLICAN GENERAL PRIMARY BALLOT

Huntingdon County

Commonwealth of Pennsylvania

MAY 19, 2026



**INSTRUCTIONS TO VOTER:**

1. To vote you must blacken the oval (●) completely. An oval (●) blackened to the left of the name of any candidate indicates a vote for that candidate.
2. To vote for a person whose name is not on the ballot, you must blacken the oval (●) to the left of the line provided, and write or print the name in the blank space provided for that purpose.
3. Use only a black pen.
4. If you make a mistake, DO NOT CORRECT. Ask for a new ballot.
5. Do not fold the ballot unless voting by absentee or mail-in ballot.
6. WARNING: If you receive an absentee or mail-in ballot and return your voted ballot by the deadline, you may not vote at your polling place on election day. If you are unable to return your voted absentee or mail-in ballot by the deadline, you may only vote a provisional ballot at your polling place on election day, unless you surrender your absentee or mail-in ballot and return envelope containing the Voter's Declaration to the judge of elections to be voided to vote by regular ballot.

**SENATOR IN THE GENERAL ASSEMBLY  
30TH DISTRICT  
VOTE FOR ONE**

- JUDY WARD  
BLAIR COUNTY
- \_\_\_\_\_  
Write-in

**REPRESENTATIVE IN THE GENERAL ASSEMBLY  
81ST DISTRICT  
VOTE FOR ONE**

- RICH IRVIN  
HUNTINGDON COUNTY
- \_\_\_\_\_  
Write-in

**MEMBER OF REPUBLICAN STATE COMMITTEE  
31st DISTRICT  
VOTE FOR NOT MORE THAN TWO,  
ELECTING 1 MALE AND 1 FEMALE**

- JULIA B WILT  
HUNTINGDON COUNTY FEMALE
- STEVEN CAROWICK JR  
HUNTINGDON COUNTY MALE
- \_\_\_\_\_  
Write-in
- \_\_\_\_\_  
Write-in

**GOVERNOR  
VOTE FOR ONE**

- STACY GARRITY  
BRADFORD COUNTY
- \_\_\_\_\_  
Write-in

**MEMBER OF REPUBLICAN COUNTY COMMITTEE  
2 YEAR TERM  
VOTE FOR NO MORE THAN TWO**

- PEGGY STULLER
- KEVIN FLUKE
- \_\_\_\_\_  
Write-in
- \_\_\_\_\_  
Write-in

**LIEUTENANT GOVERNOR  
VOTE FOR ONE**

- JOHN VENTRE  
WESTMORELAND COUNTY
- JASON RICHEY  
ALLEGHENY COUNTY
- \_\_\_\_\_  
Write-in

**REPRESENTATIVE IN CONGRESS  
13TH DISTRICT  
VOTE FOR ONE**

- JOHN JOYCE  
BLAIR COUNTY
- \_\_\_\_\_  
Write-in

**HUNTINGDON COUNTY  
BOARD OF ELECTIONS**

*Scott Walk*  
*Patricia Reeder*  
*Jeffrey Thomas*

PENN

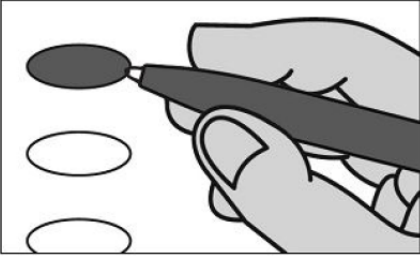
Typ:04 Seq:0038 Spl:01

# OFFICIAL REPUBLICAN GENERAL PRIMARY BALLOT

Huntingdon County

Commonwealth of Pennsylvania

MAY 19, 2026



**INSTRUCTIONS TO VOTER:**

1. To vote you must blacken the oval (●) completely. An oval (●) blackened to the left of the name of any candidate indicates a vote for that candidate.
2. To vote for a person whose name is not on the ballot, you must blacken the oval (●) to the left of the line provided, and write or print the name in the blank space provided for that purpose.
3. Use only a black pen.
4. If you make a mistake, DO NOT CORRECT. Ask for a new ballot.
5. Do not fold the ballot unless voting by absentee or mail-in ballot.
6. WARNING: If you receive an absentee or mail-in ballot and return your voted ballot by the deadline, you may not vote at your polling place on election day. If you are unable to return your voted absentee or mail-in ballot by the deadline, you may only vote a provisional ballot at your polling place on election day, unless you surrender your absentee or mail-in ballot and return envelope containing the Voter's Declaration to the judge of elections to be voided to vote by regular ballot.

**SENATOR IN THE GENERAL ASSEMBLY  
30TH DISTRICT  
VOTE FOR ONE**

- JUDY WARD  
BLAIR COUNTY
- \_\_\_\_\_  
Write-in

**REPRESENTATIVE IN THE GENERAL ASSEMBLY  
81ST DISTRICT  
VOTE FOR ONE**

- RICH IRVIN  
HUNTINGDON COUNTY
- \_\_\_\_\_  
Write-in

**MEMBER OF REPUBLICAN STATE COMMITTEE  
31st DISTRICT  
VOTE FOR NOT MORE THAN TWO,  
ELECTING 1 MALE AND 1 FEMALE**

- JULIA B WILT  
HUNTINGDON COUNTY FEMALE
- STEVEN CAROWICK JR  
HUNTINGDON COUNTY MALE
- \_\_\_\_\_  
Write-in
- \_\_\_\_\_  
Write-in

**GOVERNOR  
VOTE FOR ONE**

- STACY GARRITY  
BRADFORD COUNTY
- \_\_\_\_\_  
Write-in

**MEMBER OF REPUBLICAN COUNTY COMMITTEE  
2 YEAR TERM  
VOTE FOR NO MORE THAN TWO**

- \_\_\_\_\_  
Write-in
- \_\_\_\_\_  
Write-in

**LIEUTENANT GOVERNOR  
VOTE FOR ONE**

- JOHN VENTRE  
WESTMORELAND COUNTY
- JASON RICHEY  
ALLEGHENY COUNTY
- \_\_\_\_\_  
Write-in

**REPRESENTATIVE IN CONGRESS  
13TH DISTRICT  
VOTE FOR ONE**

- JOHN JOYCE  
BLAIR COUNTY
- \_\_\_\_\_  
Write-in

**HUNTINGDON COUNTY  
BOARD OF ELECTIONS**

*Scott Walk*  
*Patricia Reeder*  
*Jeffrey Thomas*

PETERSBURG

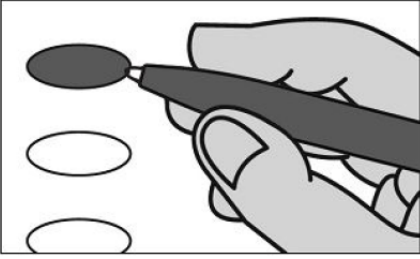
Typ:04 Seq:0039 Spl:01

# OFFICIAL REPUBLICAN GENERAL PRIMARY BALLOT

Huntingdon County

Commonwealth of Pennsylvania

MAY 19, 2026



**INSTRUCTIONS TO VOTER:**

1. To vote you must blacken the oval (●) completely. An oval (●) blackened to the left of the name of any candidate indicates a vote for that candidate.
2. To vote for a person whose name is not on the ballot, you must blacken the oval (●) to the left of the line provided, and write or print the name in the blank space provided for that purpose.
3. Use only a black pen.
4. If you make a mistake, DO NOT CORRECT. Ask for a new ballot.
5. Do not fold the ballot unless voting by absentee or mail-in ballot.
6. WARNING: If you receive an absentee or mail-in ballot and return your voted ballot by the deadline, you may not vote at your polling place on election day. If you are unable to return your voted absentee or mail-in ballot by the deadline, you may only vote a provisional ballot at your polling place on election day, unless you surrender your absentee or mail-in ballot and return envelope containing the Voter's Declaration to the judge of elections to be voided to vote by regular ballot.

**SENATOR IN THE GENERAL ASSEMBLY  
30TH DISTRICT  
VOTE FOR ONE**

- JUDY WARD  
BLAIR COUNTY
- \_\_\_\_\_  
Write-in

**REPRESENTATIVE IN THE GENERAL ASSEMBLY  
81ST DISTRICT  
VOTE FOR ONE**

- RICH IRVIN  
HUNTINGDON COUNTY
- \_\_\_\_\_  
Write-in

**MEMBER OF REPUBLICAN STATE COMMITTEE  
31st DISTRICT  
VOTE FOR NOT MORE THAN TWO,  
ELECTING 1 MALE AND 1 FEMALE**

- JULIA B WILT  
HUNTINGDON COUNTY FEMALE
- STEVEN CAROWICK JR  
HUNTINGDON COUNTY MALE
- \_\_\_\_\_  
Write-in
- \_\_\_\_\_  
Write-in

**GOVERNOR  
VOTE FOR ONE**

- STACY GARRITY  
BRADFORD COUNTY
- \_\_\_\_\_  
Write-in

**MEMBER OF REPUBLICAN COUNTY COMMITTEE  
2 YEAR TERM  
VOTE FOR NO MORE THAN TWO**

- SHARON REIHART
- KURT L GRANLUND
- \_\_\_\_\_  
Write-in
- \_\_\_\_\_  
Write-in

**LIEUTENANT GOVERNOR  
VOTE FOR ONE**

- JOHN VENTRE  
WESTMORELAND COUNTY
- JASON RICHEY  
ALLEGHENY COUNTY
- \_\_\_\_\_  
Write-in

**REPRESENTATIVE IN CONGRESS  
13TH DISTRICT  
VOTE FOR ONE**

- JOHN JOYCE  
BLAIR COUNTY
- \_\_\_\_\_  
Write-in

**HUNTINGDON COUNTY  
BOARD OF ELECTIONS**

*Scott Walk*  
*Patricia Reeder*  
*Jeffrey Thomas*

PORTER

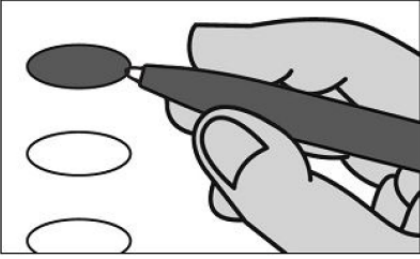
Typ:04 Seq:0040 Spl:01

# OFFICIAL REPUBLICAN GENERAL PRIMARY BALLOT

Huntingdon County

Commonwealth of Pennsylvania

MAY 19, 2026



**INSTRUCTIONS TO VOTER:**

1. To vote you must blacken the oval (●) completely. An oval (●) blackened to the left of the name of any candidate indicates a vote for that candidate.
2. To vote for a person whose name is not on the ballot, you must blacken the oval (●) to the left of the line provided, and write or print the name in the blank space provided for that purpose.
3. Use only a black pen.
4. If you make a mistake, DO NOT CORRECT. Ask for a new ballot.
5. Do not fold the ballot unless voting by absentee or mail-in ballot.
6. WARNING: If you receive an absentee or mail-in ballot and return your voted ballot by the deadline, you may not vote at your polling place on election day. If you are unable to return your voted absentee or mail-in ballot by the deadline, you may only vote a provisional ballot at your polling place on election day, unless you surrender your absentee or mail-in ballot and return envelope containing the Voter's Declaration to the judge of elections to be voided to vote by regular ballot.

**SENATOR IN THE GENERAL ASSEMBLY  
30TH DISTRICT  
VOTE FOR ONE**

- JUDY WARD  
BLAIR COUNTY
- \_\_\_\_\_  
Write-in

**REPRESENTATIVE IN THE GENERAL ASSEMBLY  
81ST DISTRICT  
VOTE FOR ONE**

- RICH IRVIN  
HUNTINGDON COUNTY
- \_\_\_\_\_  
Write-in

**MEMBER OF REPUBLICAN STATE COMMITTEE  
31st DISTRICT  
VOTE FOR NOT MORE THAN TWO,  
ELECTING 1 MALE AND 1 FEMALE**

- JULIA B WILT  
HUNTINGDON COUNTY FEMALE
- STEVEN CAROWICK JR  
HUNTINGDON COUNTY MALE
- \_\_\_\_\_  
Write-in
- \_\_\_\_\_  
Write-in

**GOVERNOR  
VOTE FOR ONE**

- STACY GARRITY  
BRADFORD COUNTY
- \_\_\_\_\_  
Write-in

**MEMBER OF REPUBLICAN COUNTY COMMITTEE  
2 YEAR TERM  
VOTE FOR NO MORE THAN TWO**

- JOANN WAKEFIELD
- \_\_\_\_\_  
Write-in
- \_\_\_\_\_  
Write-in

**LIEUTENANT GOVERNOR  
VOTE FOR ONE**

- JOHN VENTRE  
WESTMORELAND COUNTY
- JASON RICHEY  
ALLEGHENY COUNTY
- \_\_\_\_\_  
Write-in

**REPRESENTATIVE IN CONGRESS  
13TH DISTRICT  
VOTE FOR ONE**

- JOHN JOYCE  
BLAIR COUNTY
- \_\_\_\_\_  
Write-in

**HUNTINGDON COUNTY  
BOARD OF ELECTIONS**

*Scott Walk*  
*Patricia Reeder*  
*Jeffrey Thomas*

ROCKHILL

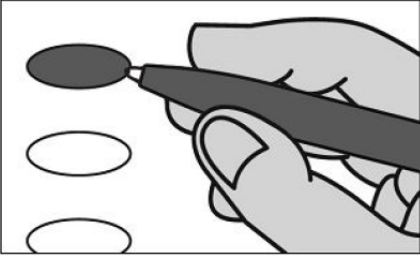
Typ:04 Seq:0041 Spl:01

# OFFICIAL REPUBLICAN GENERAL PRIMARY BALLOT

Huntingdon County

Commonwealth of Pennsylvania

MAY 19, 2026



**INSTRUCTIONS TO VOTER:**

1. To vote you must blacken the oval (●) completely. An oval (●) blackened to the left of the name of any candidate indicates a vote for that candidate.
2. To vote for a person whose name is not on the ballot, you must blacken the oval (●) to the left of the line provided, and write or print the name in the blank space provided for that purpose.
3. Use only a black pen.
4. If you make a mistake, DO NOT CORRECT. Ask for a new ballot.
5. Do not fold the ballot unless voting by absentee or mail-in ballot.
6. WARNING: If you receive an absentee or mail-in ballot and return your voted ballot by the deadline, you may not vote at your polling place on election day. If you are unable to return your voted absentee or mail-in ballot by the deadline, you may only vote a provisional ballot at your polling place on election day, unless you surrender your absentee or mail-in ballot and return envelope containing the Voter's Declaration to the judge of elections to be voided to vote by regular ballot.

**SENATOR IN THE GENERAL ASSEMBLY  
30TH DISTRICT  
VOTE FOR ONE**

- JUDY WARD  
BLAIR COUNTY
- \_\_\_\_\_  
Write-in

**REPRESENTATIVE IN THE GENERAL ASSEMBLY  
81ST DISTRICT  
VOTE FOR ONE**

- RICH IRVIN  
HUNTINGDON COUNTY
- \_\_\_\_\_  
Write-in

**MEMBER OF REPUBLICAN STATE COMMITTEE  
31st DISTRICT  
VOTE FOR NOT MORE THAN TWO,  
ELECTING 1 MALE AND 1 FEMALE**

- JULIA B WILT  
HUNTINGDON COUNTY FEMALE
- STEVEN CAROWICK JR  
HUNTINGDON COUNTY MALE
- \_\_\_\_\_  
Write-in
- \_\_\_\_\_  
Write-in

**GOVERNOR  
VOTE FOR ONE**

- STACY GARRITY  
BRADFORD COUNTY
- \_\_\_\_\_  
Write-in

**MEMBER OF REPUBLICAN COUNTY COMMITTEE  
2 YEAR TERM  
VOTE FOR NO MORE THAN TWO**

- LEX J BARD
- \_\_\_\_\_  
Write-in
- \_\_\_\_\_  
Write-in

**LIEUTENANT GOVERNOR  
VOTE FOR ONE**

- JOHN VENTRE  
WESTMORELAND COUNTY
- JASON RICHEY  
ALLEGHENY COUNTY
- \_\_\_\_\_  
Write-in

**REPRESENTATIVE IN CONGRESS  
13TH DISTRICT  
VOTE FOR ONE**

- JOHN JOYCE  
BLAIR COUNTY
- \_\_\_\_\_  
Write-in

**HUNTINGDON COUNTY  
BOARD OF ELECTIONS**

*Scott Walk*  
*Patricia Reeder*  
*Jeffrey Thomas*

SALTILLO

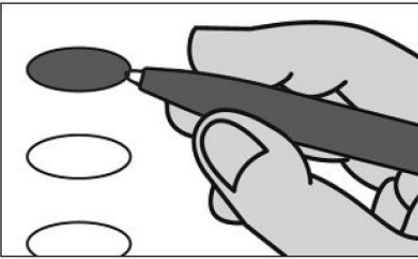
Typ:04 Seq:0042 Spl:01

# OFFICIAL REPUBLICAN GENERAL PRIMARY BALLOT

Huntingdon County

Commonwealth of Pennsylvania

MAY 19, 2026



**INSTRUCTIONS TO VOTER:**

1. To vote you must blacken the oval (●) completely. An oval (●) blackened to the left of the name of any candidate indicates a vote for that candidate.
2. To vote for a person whose name is not on the ballot, you must blacken the oval (●) to the left of the line provided, and write or print the name in the blank space provided for that purpose.
3. Use only a black pen.
4. If you make a mistake, DO NOT CORRECT. Ask for a new ballot.
5. Do not fold the ballot unless voting by absentee or mail-in ballot.
6. WARNING: If you receive an absentee or mail-in ballot and return your voted ballot by the deadline, you may not vote at your polling place on election day. If you are unable to return your voted absentee or mail-in ballot by the deadline, you may only vote a provisional ballot at your polling place on election day, unless you surrender your absentee or mail-in ballot and return envelope containing the Voter's Declaration to the judge of elections to be voided to vote by regular ballot.

**SENATOR IN THE GENERAL ASSEMBLY  
30TH DISTRICT  
VOTE FOR ONE**

- JUDY WARD  
BLAIR COUNTY
- \_\_\_\_\_  
Write-in

**REPRESENTATIVE IN THE GENERAL ASSEMBLY  
81ST DISTRICT  
VOTE FOR ONE**

- RICH IRVIN  
HUNTINGDON COUNTY
- \_\_\_\_\_  
Write-in

**MEMBER OF REPUBLICAN STATE COMMITTEE  
31st DISTRICT  
VOTE FOR NOT MORE THAN TWO,  
ELECTING 1 MALE AND 1 FEMALE**

- JULIA B WILT  
HUNTINGDON COUNTY FEMALE
- STEVEN CAROWICK JR  
HUNTINGDON COUNTY MALE
- \_\_\_\_\_  
Write-in
- \_\_\_\_\_  
Write-in

**GOVERNOR  
VOTE FOR ONE**

- STACY GARRITY  
BRADFORD COUNTY
- \_\_\_\_\_  
Write-in

**MEMBER OF REPUBLICAN COUNTY COMMITTEE  
2 YEAR TERM  
VOTE FOR NO MORE THAN TWO**

- \_\_\_\_\_  
Write-in
- \_\_\_\_\_  
Write-in

**LIEUTENANT GOVERNOR  
VOTE FOR ONE**

- JOHN VENTRE  
WESTMORELAND COUNTY
- JASON RICHEY  
ALLEGHENY COUNTY
- \_\_\_\_\_  
Write-in

**REPRESENTATIVE IN CONGRESS  
13TH DISTRICT  
VOTE FOR ONE**

- JOHN JOYCE  
BLAIR COUNTY
- \_\_\_\_\_  
Write-in

**HUNTINGDON COUNTY  
BOARD OF ELECTIONS**

*Scott Walk*  
*Patricia Reeder*  
*Jeffrey Thomas*

SHADE GAP

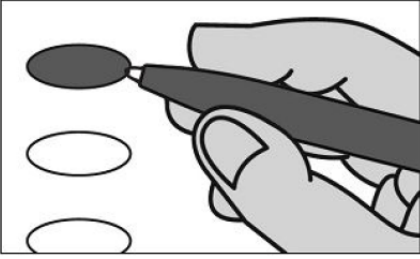
Typ:04 Seq:0043 Spl:01

# OFFICIAL REPUBLICAN GENERAL PRIMARY BALLOT

Huntingdon County

Commonwealth of Pennsylvania

MAY 19, 2026



**INSTRUCTIONS TO VOTER:**

1. To vote you must blacken the oval (●) completely. An oval (●) blackened to the left of the name of any candidate indicates a vote for that candidate.
2. To vote for a person whose name is not on the ballot, you must blacken the oval (●) to the left of the line provided, and write or print the name in the blank space provided for that purpose.
3. Use only a black pen.
4. If you make a mistake, DO NOT CORRECT. Ask for a new ballot.
5. Do not fold the ballot unless voting by absentee or mail-in ballot.
6. WARNING: If you receive an absentee or mail-in ballot and return your voted ballot by the deadline, you may not vote at your polling place on election day. If you are unable to return your voted absentee or mail-in ballot by the deadline, you may only vote a provisional ballot at your polling place on election day, unless you surrender your absentee or mail-in ballot and return envelope containing the Voter's Declaration to the judge of elections to be voided to vote by regular ballot.

**SENATOR IN THE GENERAL ASSEMBLY  
30TH DISTRICT  
VOTE FOR ONE**

- JUDY WARD  
BLAIR COUNTY
- \_\_\_\_\_  
Write-in

**REPRESENTATIVE IN THE GENERAL ASSEMBLY  
81ST DISTRICT  
VOTE FOR ONE**

- RICH IRVIN  
HUNTINGDON COUNTY
- \_\_\_\_\_  
Write-in

**MEMBER OF REPUBLICAN STATE COMMITTEE  
31st DISTRICT  
VOTE FOR NOT MORE THAN TWO,  
ELECTING 1 MALE AND 1 FEMALE**

- JULIA B WILT  
HUNTINGDON COUNTY FEMALE
- STEVEN CAROWICK JR  
HUNTINGDON COUNTY MALE
- \_\_\_\_\_  
Write-in
- \_\_\_\_\_  
Write-in

**GOVERNOR  
VOTE FOR ONE**

- STACY GARRITY  
BRADFORD COUNTY
- \_\_\_\_\_  
Write-in

**MEMBER OF REPUBLICAN COUNTY COMMITTEE  
2 YEAR TERM  
VOTE FOR NO MORE THAN TWO**

- EDWARD F HARRY JR
- SUSAN M HARRY
- \_\_\_\_\_  
Write-in
- \_\_\_\_\_  
Write-in

**LIEUTENANT GOVERNOR  
VOTE FOR ONE**

- JOHN VENTRE  
WESTMORELAND COUNTY
- JASON RICHEY  
ALLEGHENY COUNTY
- \_\_\_\_\_  
Write-in

**REPRESENTATIVE IN CONGRESS  
13TH DISTRICT  
VOTE FOR ONE**

- JOHN JOYCE  
BLAIR COUNTY
- \_\_\_\_\_  
Write-in

**HUNTINGDON COUNTY  
BOARD OF ELECTIONS**

*Scott Walk*  
*Patricia Reeder*  
*Jeffrey Thomas*

SHIRLEY\_MOUNT UNION

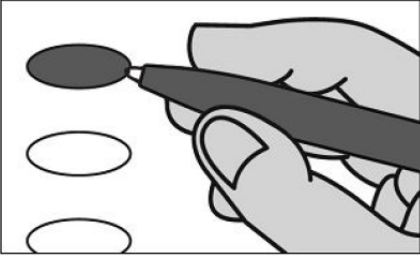
Typ:04 Seq:0044 Spl:01

# OFFICIAL REPUBLICAN GENERAL PRIMARY BALLOT

Huntingdon County

Commonwealth of Pennsylvania

MAY 19, 2026



**INSTRUCTIONS TO VOTER:**

1. To vote you must blacken the oval (●) completely. An oval (●) blackened to the left of the name of any candidate indicates a vote for that candidate.
2. To vote for a person whose name is not on the ballot, you must blacken the oval (●) to the left of the line provided, and write or print the name in the blank space provided for that purpose.
3. Use only a black pen.
4. If you make a mistake, DO NOT CORRECT. Ask for a new ballot.
5. Do not fold the ballot unless voting by absentee or mail-in ballot.
6. WARNING: If you receive an absentee or mail-in ballot and return your voted ballot by the deadline, you may not vote at your polling place on election day. If you are unable to return your voted absentee or mail-in ballot by the deadline, you may only vote a provisional ballot at your polling place on election day, unless you surrender your absentee or mail-in ballot and return envelope containing the Voter's Declaration to the judge of elections to be voided to vote by regular ballot.

**SENATOR IN THE GENERAL ASSEMBLY  
30TH DISTRICT  
VOTE FOR ONE**

- JUDY WARD  
BLAIR COUNTY
- \_\_\_\_\_  
Write-in

**REPRESENTATIVE IN THE GENERAL ASSEMBLY  
81ST DISTRICT  
VOTE FOR ONE**

- RICH IRVIN  
HUNTINGDON COUNTY
- \_\_\_\_\_  
Write-in

**MEMBER OF REPUBLICAN STATE COMMITTEE  
31st DISTRICT  
VOTE FOR NOT MORE THAN TWO,  
ELECTING 1 MALE AND 1 FEMALE**

- JULIA B WILT  
HUNTINGDON COUNTY FEMALE
- STEVEN CAROWICK JR  
HUNTINGDON COUNTY MALE
- \_\_\_\_\_  
Write-in
- \_\_\_\_\_  
Write-in

**GOVERNOR  
VOTE FOR ONE**

- STACY GARRITY  
BRADFORD COUNTY
- \_\_\_\_\_  
Write-in

**MEMBER OF REPUBLICAN COUNTY COMMITTEE  
2 YEAR TERM  
VOTE FOR NO MORE THAN TWO**

- C ARNOLD MCCLURE
- LINDA L MCCLURE
- \_\_\_\_\_  
Write-in
- \_\_\_\_\_  
Write-in

**LIEUTENANT GOVERNOR  
VOTE FOR ONE**

- JOHN VENTRE  
WESTMORELAND COUNTY
- JASON RICHEY  
ALLEGHENY COUNTY
- \_\_\_\_\_  
Write-in

**REPRESENTATIVE IN CONGRESS  
13TH DISTRICT  
VOTE FOR ONE**

- JOHN JOYCE  
BLAIR COUNTY
- \_\_\_\_\_  
Write-in

**HUNTINGDON COUNTY  
BOARD OF ELECTIONS**

*Scott Walk*  
*Patricia Reed*  
*Jeffrey Thomas*

SHIRLEY\_SHIRLEY

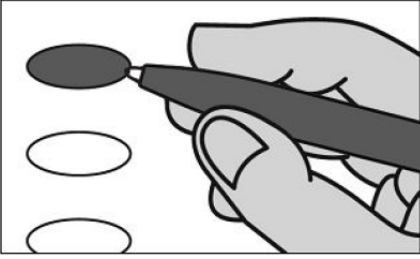
Typ:04 Seq:0045 Spl:01

# OFFICIAL REPUBLICAN GENERAL PRIMARY BALLOT

Huntingdon County

Commonwealth of Pennsylvania

MAY 19, 2026



### INSTRUCTIONS TO VOTER:

1. To vote you must blacken the oval (●) completely. An oval (●) blackened to the left of the name of any candidate indicates a vote for that candidate.
2. To vote for a person whose name is not on the ballot, you must blacken the oval (●) to the left of the line provided, and write or print the name in the blank space provided for that purpose.
3. Use only a black pen.
4. If you make a mistake, DO NOT CORRECT. Ask for a new ballot.
5. Do not fold the ballot unless voting by absentee or mail-in ballot.
6. WARNING: If you receive an absentee or mail-in ballot and return your voted ballot by the deadline, you may not vote at your polling place on election day. If you are unable to return your voted absentee or mail-in ballot by the deadline, you may only vote a provisional ballot at your polling place on election day, unless you surrender your absentee or mail-in ballot and return envelope containing the Voter's Declaration to the judge of elections to be voided to vote by regular ballot.

### SENATOR IN THE GENERAL ASSEMBLY 30TH DISTRICT VOTE FOR ONE

- JUDY WARD  
BLAIR COUNTY
- \_\_\_\_\_  
Write-in

### REPRESENTATIVE IN THE GENERAL ASSEMBLY 81ST DISTRICT VOTE FOR ONE

- RICH IRVIN  
HUNTINGDON COUNTY
- \_\_\_\_\_  
Write-in

### MEMBER OF REPUBLICAN STATE COMMITTEE 31st DISTRICT VOTE FOR NOT MORE THAN TWO, ELECTING 1 MALE AND 1 FEMALE

- JULIA B WILT  
HUNTINGDON COUNTY FEMALE
- STEVEN CAROWICK JR  
HUNTINGDON COUNTY MALE
- \_\_\_\_\_  
Write-in
- \_\_\_\_\_  
Write-in

### GOVERNOR VOTE FOR ONE

- STACY GARRITY  
BRADFORD COUNTY
- \_\_\_\_\_  
Write-in

### MEMBER OF REPUBLICAN COUNTY COMMITTEE 2 YEAR TERM VOTE FOR NO MORE THAN TWO

- \_\_\_\_\_  
Write-in
- \_\_\_\_\_  
Write-in

### LIEUTENANT GOVERNOR VOTE FOR ONE

- JOHN VENTRE  
WESTMORELAND COUNTY
- JASON RICHEY  
ALLEGHENY COUNTY
- \_\_\_\_\_  
Write-in

### REPRESENTATIVE IN CONGRESS 13TH DISTRICT VOTE FOR ONE

- JOHN JOYCE  
BLAIR COUNTY
- \_\_\_\_\_  
Write-in

### HUNTINGDON COUNTY BOARD OF ELECTIONS

*Scott Walk*  
*Patricia Reeder*  
*Jeffrey Thomas*

SHIRLEY\_VALLEY POINT

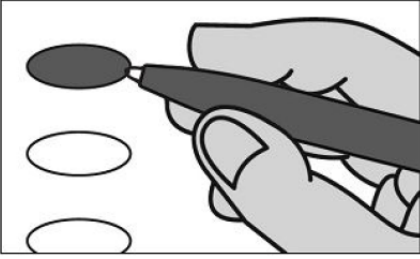
Typ:04 Seq:0046 Spl:01

# OFFICIAL REPUBLICAN GENERAL PRIMARY BALLOT

Huntingdon County

Commonwealth of Pennsylvania

MAY 19, 2026



### INSTRUCTIONS TO VOTER:

1. To vote you must blacken the oval (●) completely. An oval (●) blackened to the left of the name of any candidate indicates a vote for that candidate.
2. To vote for a person whose name is not on the ballot, you must blacken the oval (●) to the left of the line provided, and write or print the name in the blank space provided for that purpose.
3. Use only a black pen.
4. If you make a mistake, DO NOT CORRECT. Ask for a new ballot.
5. Do not fold the ballot unless voting by absentee or mail-in ballot.
6. WARNING: If you receive an absentee or mail-in ballot and return your voted ballot by the deadline, you may not vote at your polling place on election day. If you are unable to return your voted absentee or mail-in ballot by the deadline, you may only vote a provisional ballot at your polling place on election day, unless you surrender your absentee or mail-in ballot and return envelope containing the Voter's Declaration to the judge of elections to be voided to vote by regular ballot.

### SENATOR IN THE GENERAL ASSEMBLY 30TH DISTRICT VOTE FOR ONE

- JUDY WARD  
BLAIR COUNTY
- \_\_\_\_\_  
Write-in

### REPRESENTATIVE IN THE GENERAL ASSEMBLY 81ST DISTRICT VOTE FOR ONE

- RICH IRVIN  
HUNTINGDON COUNTY
- \_\_\_\_\_  
Write-in

### MEMBER OF REPUBLICAN STATE COMMITTEE 31st DISTRICT VOTE FOR NOT MORE THAN TWO, ELECTING 1 MALE AND 1 FEMALE

- JULIA B WILT  
HUNTINGDON COUNTY FEMALE
- STEVEN CAROWICK JR  
HUNTINGDON COUNTY MALE
- \_\_\_\_\_  
Write-in
- \_\_\_\_\_  
Write-in

### GOVERNOR VOTE FOR ONE

- STACY GARRITY  
BRADFORD COUNTY
- \_\_\_\_\_  
Write-in

### MEMBER OF REPUBLICAN COUNTY COMMITTEE 2 YEAR TERM VOTE FOR NO MORE THAN TWO

- \_\_\_\_\_  
Write-in
- \_\_\_\_\_  
Write-in

### LIEUTENANT GOVERNOR VOTE FOR ONE

- JOHN VENTRE  
WESTMORELAND COUNTY
- JASON RICHEY  
ALLEGHENY COUNTY
- \_\_\_\_\_  
Write-in

### REPRESENTATIVE IN CONGRESS 13TH DISTRICT VOTE FOR ONE

- JOHN JOYCE  
BLAIR COUNTY
- \_\_\_\_\_  
Write-in

### HUNTINGDON COUNTY BOARD OF ELECTIONS

*Scott Walk*  
*Patricia Reeder*  
*Jeffrey Thomas*

SHIRLEYSBURG

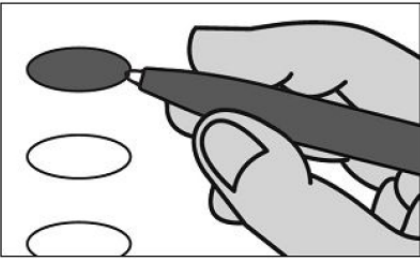
Typ:04 Seq:0047 Spl:01

# OFFICIAL REPUBLICAN GENERAL PRIMARY BALLOT

Huntingdon County

Commonwealth of Pennsylvania

MAY 19, 2026



### INSTRUCTIONS TO VOTER:

1. To vote you must blacken the oval (●) completely. An oval (●) blackened to the left of the name of any candidate indicates a vote for that candidate.
2. To vote for a person whose name is not on the ballot, you must blacken the oval (●) to the left of the line provided, and write or print the name in the blank space provided for that purpose.
3. Use only a black pen.
4. If you make a mistake, DO NOT CORRECT. Ask for a new ballot.
5. Do not fold the ballot unless voting by absentee or mail-in ballot.
6. WARNING: If you receive an absentee or mail-in ballot and return your voted ballot by the deadline, you may not vote at your polling place on election day. If you are unable to return your voted absentee or mail-in ballot by the deadline, you may only vote a provisional ballot at your polling place on election day, unless you surrender your absentee or mail-in ballot and return envelope containing the Voter's Declaration to the judge of elections to be voided to vote by regular ballot.

### SENATOR IN THE GENERAL ASSEMBLY 30TH DISTRICT VOTE FOR ONE

- JUDY WARD  
BLAIR COUNTY
- \_\_\_\_\_  
Write-in

### REPRESENTATIVE IN THE GENERAL ASSEMBLY 81ST DISTRICT VOTE FOR ONE

- RICH IRVIN  
HUNTINGDON COUNTY
- \_\_\_\_\_  
Write-in

### MEMBER OF REPUBLICAN STATE COMMITTEE 31st DISTRICT VOTE FOR NOT MORE THAN TWO, ELECTING 1 MALE AND 1 FEMALE

- JULIA B WILT  
HUNTINGDON COUNTY FEMALE
- STEVEN CAROWICK JR  
HUNTINGDON COUNTY MALE
- \_\_\_\_\_  
Write-in
- \_\_\_\_\_  
Write-in

### GOVERNOR VOTE FOR ONE

- STACY GARRITY  
BRADFORD COUNTY
- \_\_\_\_\_  
Write-in

### MEMBER OF REPUBLICAN COUNTY COMMITTEE 2 YEAR TERM VOTE FOR NO MORE THAN TWO

- KENNETH SHEA
- RUTH ELAINE SHEA
- \_\_\_\_\_  
Write-in
- \_\_\_\_\_  
Write-in

### LIEUTENANT GOVERNOR VOTE FOR ONE

- JOHN VENTRE  
WESTMORELAND COUNTY
- JASON RICHEY  
ALLEGHENY COUNTY
- \_\_\_\_\_  
Write-in

### REPRESENTATIVE IN CONGRESS 13TH DISTRICT VOTE FOR ONE

- JOHN JOYCE  
BLAIR COUNTY
- \_\_\_\_\_  
Write-in

### HUNTINGDON COUNTY BOARD OF ELECTIONS

*Scott Walk*  
*Patricia Reeder*  
*Jeffrey Thomas*

SMITHFIELD

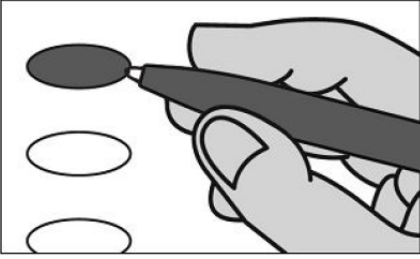
Typ:04 Seq:0048 Spl:01

# OFFICIAL REPUBLICAN GENERAL PRIMARY BALLOT

Huntingdon County

Commonwealth of Pennsylvania

MAY 19, 2026



**INSTRUCTIONS TO VOTER:**

1. To vote you must blacken the oval (●) completely. An oval (●) blackened to the left of the name of any candidate indicates a vote for that candidate.
2. To vote for a person whose name is not on the ballot, you must blacken the oval (●) to the left of the line provided, and write or print the name in the blank space provided for that purpose.
3. Use only a black pen.
4. If you make a mistake, DO NOT CORRECT. Ask for a new ballot.
5. Do not fold the ballot unless voting by absentee or mail-in ballot.
6. WARNING: If you receive an absentee or mail-in ballot and return your voted ballot by the deadline, you may not vote at your polling place on election day. If you are unable to return your voted absentee or mail-in ballot by the deadline, you may only vote a provisional ballot at your polling place on election day, unless you surrender your absentee or mail-in ballot and return envelope containing the Voter's Declaration to the judge of elections to be voided to vote by regular ballot.

**SENATOR IN THE GENERAL ASSEMBLY  
30TH DISTRICT  
VOTE FOR ONE**

- JUDY WARD  
BLAIR COUNTY
- \_\_\_\_\_  
Write-in

**REPRESENTATIVE IN THE GENERAL ASSEMBLY  
81ST DISTRICT  
VOTE FOR ONE**

- RICH IRVIN  
HUNTINGDON COUNTY
- \_\_\_\_\_  
Write-in

**MEMBER OF REPUBLICAN STATE COMMITTEE  
31st DISTRICT  
VOTE FOR NOT MORE THAN TWO,  
ELECTING 1 MALE AND 1 FEMALE**

- JULIA B WILT  
HUNTINGDON COUNTY FEMALE
- STEVEN CAROWICK JR  
HUNTINGDON COUNTY MALE
- \_\_\_\_\_  
Write-in
- \_\_\_\_\_  
Write-in

**GOVERNOR  
VOTE FOR ONE**

- STACY GARRITY  
BRADFORD COUNTY
- \_\_\_\_\_  
Write-in

**MEMBER OF REPUBLICAN COUNTY COMMITTEE  
2 YEAR TERM  
VOTE FOR NO MORE THAN TWO**

- LISA A LOW
- \_\_\_\_\_  
Write-in
- \_\_\_\_\_  
Write-in

**LIEUTENANT GOVERNOR  
VOTE FOR ONE**

- JOHN VENTRE  
WESTMORELAND COUNTY
- JASON RICHEY  
ALLEGHENY COUNTY
- \_\_\_\_\_  
Write-in

**REPRESENTATIVE IN CONGRESS  
13TH DISTRICT  
VOTE FOR ONE**

- JOHN JOYCE  
BLAIR COUNTY
- \_\_\_\_\_  
Write-in

**HUNTINGDON COUNTY  
BOARD OF ELECTIONS**

*Scott Walk*  
*Patricia Reed*  
*Jeffrey Thomas*

SPRINGFIELD

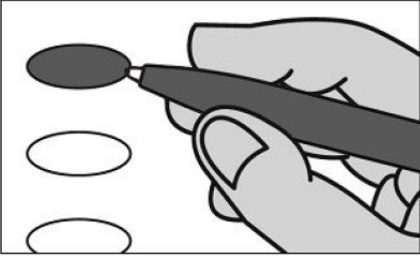
Typ:04 Seq:0049 Spl:01

# OFFICIAL REPUBLICAN GENERAL PRIMARY BALLOT

Huntingdon County

Commonwealth of Pennsylvania

MAY 19, 2026



### INSTRUCTIONS TO VOTER:

1. To vote you must blacken the oval (●) completely. An oval (●) blackened to the left of the name of any candidate indicates a vote for that candidate.
2. To vote for a person whose name is not on the ballot, you must blacken the oval (●) to the left of the line provided, and write or print the name in the blank space provided for that purpose.
3. Use only a black pen.
4. If you make a mistake, DO NOT CORRECT. Ask for a new ballot.
5. Do not fold the ballot unless voting by absentee or mail-in ballot.
6. WARNING: If you receive an absentee or mail-in ballot and return your voted ballot by the deadline, you may not vote at your polling place on election day. If you are unable to return your voted absentee or mail-in ballot by the deadline, you may only vote a provisional ballot at your polling place on election day, unless you surrender your absentee or mail-in ballot and return envelope containing the Voter's Declaration to the judge of elections to be voided to vote by regular ballot.

### SENATOR IN THE GENERAL ASSEMBLY 30TH DISTRICT VOTE FOR ONE

- JUDY WARD  
BLAIR COUNTY
- \_\_\_\_\_  
Write-in

### REPRESENTATIVE IN THE GENERAL ASSEMBLY 81ST DISTRICT VOTE FOR ONE

- RICH IRVIN  
HUNTINGDON COUNTY
- \_\_\_\_\_  
Write-in

### MEMBER OF REPUBLICAN STATE COMMITTEE 31st DISTRICT VOTE FOR NOT MORE THAN TWO, ELECTING 1 MALE AND 1 FEMALE

- JULIA B WILT  
HUNTINGDON COUNTY FEMALE
- STEVEN CAROWICK JR  
HUNTINGDON COUNTY MALE
- \_\_\_\_\_  
Write-in
- \_\_\_\_\_  
Write-in

### GOVERNOR VOTE FOR ONE

- STACY GARRITY  
BRADFORD COUNTY
- \_\_\_\_\_  
Write-in

### MEMBER OF REPUBLICAN COUNTY COMMITTEE 2 YEAR TERM VOTE FOR NO MORE THAN TWO

- JAIME EWELL-IRVIN
- RICH IRVIN
- \_\_\_\_\_  
Write-in
- \_\_\_\_\_  
Write-in

### LIEUTENANT GOVERNOR VOTE FOR ONE

- JOHN VENTRE  
WESTMORELAND COUNTY
- JASON RICHEY  
ALLEGHENY COUNTY
- \_\_\_\_\_  
Write-in

### REPRESENTATIVE IN CONGRESS 13TH DISTRICT VOTE FOR ONE

- JOHN JOYCE  
BLAIR COUNTY
- \_\_\_\_\_  
Write-in

### HUNTINGDON COUNTY BOARD OF ELECTIONS

*Scott Walk*  
*Patricia Reeder*  
*Jeffrey Thomas*

SPRUCE CREEK

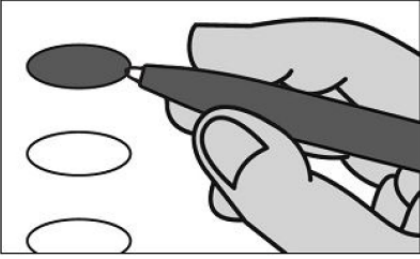
Typ:04 Seq:0050 Spl:01

# OFFICIAL REPUBLICAN GENERAL PRIMARY BALLOT

Huntingdon County

Commonwealth of Pennsylvania

MAY 19, 2026



**INSTRUCTIONS TO VOTER:**

1. To vote you must blacken the oval (●) completely. An oval (●) blackened to the left of the name of any candidate indicates a vote for that candidate.
2. To vote for a person whose name is not on the ballot, you must blacken the oval (●) to the left of the line provided, and write or print the name in the blank space provided for that purpose.
3. Use only a black pen.
4. If you make a mistake, DO NOT CORRECT. Ask for a new ballot.
5. Do not fold the ballot unless voting by absentee or mail-in ballot.
6. WARNING: If you receive an absentee or mail-in ballot and return your voted ballot by the deadline, you may not vote at your polling place on election day. If you are unable to return your voted absentee or mail-in ballot by the deadline, you may only vote a provisional ballot at your polling place on election day, unless you surrender your absentee or mail-in ballot and return envelope containing the Voter's Declaration to the judge of elections to be voided to vote by regular ballot.

**SENATOR IN THE GENERAL ASSEMBLY  
30TH DISTRICT  
VOTE FOR ONE**

- JUDY WARD  
BLAIR COUNTY
- \_\_\_\_\_  
Write-in

**REPRESENTATIVE IN THE GENERAL ASSEMBLY  
81ST DISTRICT  
VOTE FOR ONE**

- RICH IRVIN  
HUNTINGDON COUNTY
- \_\_\_\_\_  
Write-in

**MEMBER OF REPUBLICAN STATE COMMITTEE  
31st DISTRICT  
VOTE FOR NOT MORE THAN TWO,  
ELECTING 1 MALE AND 1 FEMALE**

- JULIA B WILT  
HUNTINGDON COUNTY FEMALE
- STEVEN CAROWICK JR  
HUNTINGDON COUNTY MALE
- \_\_\_\_\_  
Write-in
- \_\_\_\_\_  
Write-in

**GOVERNOR  
VOTE FOR ONE**

- STACY GARRITY  
BRADFORD COUNTY
- \_\_\_\_\_  
Write-in

**MEMBER OF REPUBLICAN COUNTY COMMITTEE  
2 YEAR TERM  
VOTE FOR NO MORE THAN TWO**

- CONNIE BERRIER
- \_\_\_\_\_  
Write-in
- \_\_\_\_\_  
Write-in

**LIEUTENANT GOVERNOR  
VOTE FOR ONE**

- JOHN VENTRE  
WESTMORELAND COUNTY
- JASON RICHEY  
ALLEGHENY COUNTY
- \_\_\_\_\_  
Write-in

**REPRESENTATIVE IN CONGRESS  
13TH DISTRICT  
VOTE FOR ONE**

- JOHN JOYCE  
BLAIR COUNTY
- \_\_\_\_\_  
Write-in

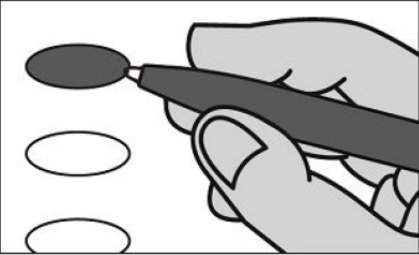
**HUNTINGDON COUNTY  
BOARD OF ELECTIONS**

*Scott Walk*  
*Patricia Reeder*  
*Jeffrey Thomas*

TELL

Typ:04 Seq:0051 Spl:01

# OFFICIAL REPUBLICAN GENERAL PRIMARY BALLOT

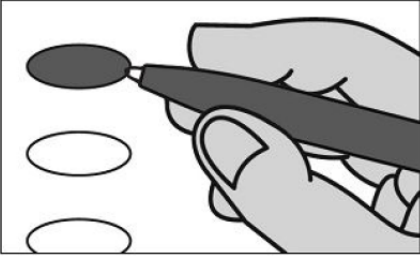
Huntingdon County	Commonwealth of Pennsylvania	MAY 19, 2026
	<p><b>SENATOR IN THE GENERAL ASSEMBLY 30TH DISTRICT VOTE FOR ONE</b></p>	
<p><b>INSTRUCTIONS TO VOTER:</b></p> <ol style="list-style-type: none"> <li>To vote you must blacken the oval (●) completely. An oval (●) blackened to the left of the name of any candidate indicates a vote for that candidate.</li> <li>To vote for a person whose name is not on the ballot, you must blacken the oval (●) to the left of the line provided, and write or print the name in the blank space provided for that purpose.</li> <li>Use only a black pen.</li> <li>If you make a mistake, DO NOT CORRECT. Ask for a new ballot.</li> <li>Do not fold the ballot unless voting by absentee or mail-in ballot.</li> <li><b>WARNING:</b> If you receive an absentee or mail-in ballot and return your voted ballot by the deadline, you may not vote at your polling place on election day. If you are unable to return your voted absentee or mail-in ballot by the deadline, you may only vote a provisional ballot at your polling place on election day, unless you surrender your absentee or mail-in ballot and return envelope containing the Voter's Declaration to the judge of elections to be voided to vote by regular ballot.</li> </ol>	<p><input type="radio"/> JUDY WARD BLAIR COUNTY</p> <p><input type="radio"/> _____ Write-in</p>	
	<p><b>REPRESENTATIVE IN THE GENERAL ASSEMBLY 81ST DISTRICT VOTE FOR ONE</b></p>	
	<p><input type="radio"/> RICH IRVIN HUNTINGDON COUNTY</p> <p><input type="radio"/> _____ Write-in</p>	
	<p><b>MEMBER OF REPUBLICAN STATE COMMITTEE 31st DISTRICT VOTE FOR NOT MORE THAN TWO, ELECTING 1 MALE AND 1 FEMALE</b></p>	
<p><b>GOVERNOR VOTE FOR ONE</b></p>	<p><input type="radio"/> JULIA B WILT HUNTINGDON COUNTY FEMALE</p> <p><input type="radio"/> STEVEN CAROWICK JR HUNTINGDON COUNTY MALE</p> <p><input type="radio"/> _____ Write-in</p> <p><input type="radio"/> _____ Write-in</p>	
<p><input type="radio"/> STACY GARRITY BRADFORD COUNTY</p> <p><input type="radio"/> _____ Write-in</p>	<p><b>MEMBER OF REPUBLICAN COUNTY COMMITTEE 2 YEAR TERM VOTE FOR NO MORE THAN TWO</b></p>	
<p><b>LIEUTENANT GOVERNOR VOTE FOR ONE</b></p>	<p><input type="radio"/> ROBERT DEAN TREGO</p> <p><input type="radio"/> CHARLES E HARPER</p> <p><input type="radio"/> _____ Write-in</p> <p><input type="radio"/> _____ Write-in</p>	
<p><input type="radio"/> JOHN VENTRE WESTMORELAND COUNTY</p> <p><input type="radio"/> JASON RICHEY ALLEGHENY COUNTY</p> <p><input type="radio"/> _____ Write-in</p>	<p><b>REPRESENTATIVE IN CONGRESS 13TH DISTRICT VOTE FOR ONE</b></p>	<p><b>HUNTINGDON COUNTY BOARD OF ELECTIONS</b></p> <p><i>Scott Walk</i></p> <p><i>Patricia Reeder</i></p> <p><i>Jeffrey Thomas</i></p>
<p><input type="radio"/> JOHN JOYCE BLAIR COUNTY</p> <p><input type="radio"/> _____ Write-in</p>	<p><input type="radio"/> _____ Write-in</p>	
THREE SPRINGS	Typ:04 Seq:0052 Spl:01	

# OFFICIAL REPUBLICAN GENERAL PRIMARY BALLOT

Huntingdon County

Commonwealth of Pennsylvania

MAY 19, 2026



**INSTRUCTIONS TO VOTER:**

1. To vote you must blacken the oval (●) completely. An oval (●) blackened to the left of the name of any candidate indicates a vote for that candidate.
2. To vote for a person whose name is not on the ballot, you must blacken the oval (●) to the left of the line provided, and write or print the name in the blank space provided for that purpose.
3. Use only a black pen.
4. If you make a mistake, DO NOT CORRECT. Ask for a new ballot.
5. Do not fold the ballot unless voting by absentee or mail-in ballot.
6. WARNING: If you receive an absentee or mail-in ballot and return your voted ballot by the deadline, you may not vote at your polling place on election day. If you are unable to return your voted absentee or mail-in ballot by the deadline, you may only vote a provisional ballot at your polling place on election day, unless you surrender your absentee or mail-in ballot and return envelope containing the Voter's Declaration to the judge of elections to be voided to vote by regular ballot.

**SENATOR IN THE GENERAL ASSEMBLY  
30TH DISTRICT  
VOTE FOR ONE**

- JUDY WARD  
BLAIR COUNTY
- \_\_\_\_\_  
Write-in

**REPRESENTATIVE IN THE GENERAL ASSEMBLY  
81ST DISTRICT  
VOTE FOR ONE**

- RICH IRVIN  
HUNTINGDON COUNTY
- \_\_\_\_\_  
Write-in

**MEMBER OF REPUBLICAN STATE COMMITTEE  
31st DISTRICT  
VOTE FOR NOT MORE THAN TWO,  
ELECTING 1 MALE AND 1 FEMALE**

- JULIA B WILT  
HUNTINGDON COUNTY FEMALE
- STEVEN CAROWICK JR  
HUNTINGDON COUNTY MALE
- \_\_\_\_\_  
Write-in
- \_\_\_\_\_  
Write-in

**GOVERNOR  
VOTE FOR ONE**

- STACY GARRITY  
BRADFORD COUNTY
- \_\_\_\_\_  
Write-in

**MEMBER OF REPUBLICAN COUNTY COMMITTEE  
2 YEAR TERM  
VOTE FOR NO MORE THAN TWO**

- \_\_\_\_\_  
Write-in
- \_\_\_\_\_  
Write-in

**LIEUTENANT GOVERNOR  
VOTE FOR ONE**

- JOHN VENTRE  
WESTMORELAND COUNTY
- JASON RICHEY  
ALLEGHENY COUNTY
- \_\_\_\_\_  
Write-in

**REPRESENTATIVE IN CONGRESS  
13TH DISTRICT  
VOTE FOR ONE**

- JOHN JOYCE  
BLAIR COUNTY
- \_\_\_\_\_  
Write-in

**HUNTINGDON COUNTY  
BOARD OF ELECTIONS**

*Scott Walk*  
*Patricia Reeder*  
*Jeffrey Thomas*

TODD

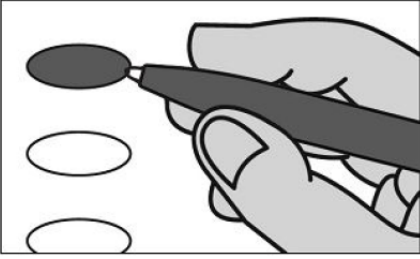
Typ:04 Seq:0053 Spl:01

# OFFICIAL REPUBLICAN GENERAL PRIMARY BALLOT

Huntingdon County

Commonwealth of Pennsylvania

MAY 19, 2026



**INSTRUCTIONS TO VOTER:**

1. To vote you must blacken the oval (●) completely. An oval (●) blackened to the left of the name of any candidate indicates a vote for that candidate.
2. To vote for a person whose name is not on the ballot, you must blacken the oval (●) to the left of the line provided, and write or print the name in the blank space provided for that purpose.
3. Use only a black pen.
4. If you make a mistake, DO NOT CORRECT. Ask for a new ballot.
5. Do not fold the ballot unless voting by absentee or mail-in ballot.
6. WARNING: If you receive an absentee or mail-in ballot and return your voted ballot by the deadline, you may not vote at your polling place on election day. If you are unable to return your voted absentee or mail-in ballot by the deadline, you may only vote a provisional ballot at your polling place on election day, unless you surrender your absentee or mail-in ballot and return envelope containing the Voter's Declaration to the judge of elections to be voided to vote by regular ballot.

**SENATOR IN THE GENERAL ASSEMBLY  
30TH DISTRICT  
VOTE FOR ONE**

- JUDY WARD  
BLAIR COUNTY
- \_\_\_\_\_  
Write-in

**REPRESENTATIVE IN THE GENERAL ASSEMBLY  
81ST DISTRICT  
VOTE FOR ONE**

- RICH IRVIN  
HUNTINGDON COUNTY
- \_\_\_\_\_  
Write-in

**MEMBER OF REPUBLICAN STATE COMMITTEE  
31st DISTRICT  
VOTE FOR NOT MORE THAN TWO,  
ELECTING 1 MALE AND 1 FEMALE**

- JULIA B WILT  
HUNTINGDON COUNTY FEMALE
- STEVEN CAROWICK JR  
HUNTINGDON COUNTY MALE
- \_\_\_\_\_  
Write-in
- \_\_\_\_\_  
Write-in

**GOVERNOR  
VOTE FOR ONE**

- STACY GARRITY  
BRADFORD COUNTY
- \_\_\_\_\_  
Write-in

**MEMBER OF REPUBLICAN COUNTY COMMITTEE  
2 YEAR TERM  
VOTE FOR NO MORE THAN TWO**

- \_\_\_\_\_  
Write-in
- \_\_\_\_\_  
Write-in

**LIEUTENANT GOVERNOR  
VOTE FOR ONE**

- JOHN VENTRE  
WESTMORELAND COUNTY
- JASON RICHEY  
ALLEGHENY COUNTY
- \_\_\_\_\_  
Write-in

**REPRESENTATIVE IN CONGRESS  
13TH DISTRICT  
VOTE FOR ONE**

- JOHN JOYCE  
BLAIR COUNTY
- \_\_\_\_\_  
Write-in

**HUNTINGDON COUNTY  
BOARD OF ELECTIONS**

*Scott Walk*  
*Patricia Reeder*  
*Jeffrey Thomas*

UNION

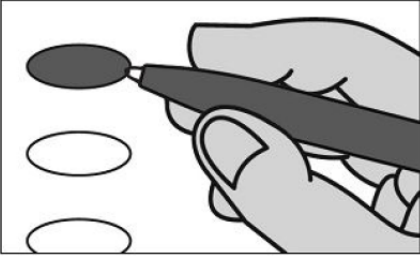
Typ:04 Seq:0054 Spl:01

# OFFICIAL REPUBLICAN GENERAL PRIMARY BALLOT

Huntingdon County

Commonwealth of Pennsylvania

MAY 19, 2026



**INSTRUCTIONS TO VOTER:**

1. To vote you must blacken the oval (●) completely. An oval (●) blackened to the left of the name of any candidate indicates a vote for that candidate.
2. To vote for a person whose name is not on the ballot, you must blacken the oval (●) to the left of the line provided, and write or print the name in the blank space provided for that purpose.
3. Use only a black pen.
4. If you make a mistake, DO NOT CORRECT. Ask for a new ballot.
5. Do not fold the ballot unless voting by absentee or mail-in ballot.
6. WARNING: If you receive an absentee or mail-in ballot and return your voted ballot by the deadline, you may not vote at your polling place on election day. If you are unable to return your voted absentee or mail-in ballot by the deadline, you may only vote a provisional ballot at your polling place on election day, unless you surrender your absentee or mail-in ballot and return envelope containing the Voter's Declaration to the judge of elections to be voided to vote by regular ballot.

**SENATOR IN THE GENERAL ASSEMBLY  
30TH DISTRICT  
VOTE FOR ONE**

- JUDY WARD  
BLAIR COUNTY
- \_\_\_\_\_  
Write-in

**REPRESENTATIVE IN THE GENERAL ASSEMBLY  
81ST DISTRICT  
VOTE FOR ONE**

- RICH IRVIN  
HUNTINGDON COUNTY
- \_\_\_\_\_  
Write-in

**MEMBER OF REPUBLICAN STATE COMMITTEE  
31st DISTRICT  
VOTE FOR NOT MORE THAN TWO,  
ELECTING 1 MALE AND 1 FEMALE**

- JULIA B WILT  
HUNTINGDON COUNTY FEMALE
- STEVEN CAROWICK JR  
HUNTINGDON COUNTY MALE
- \_\_\_\_\_  
Write-in
- \_\_\_\_\_  
Write-in

**GOVERNOR  
VOTE FOR ONE**

- STACY GARRITY  
BRADFORD COUNTY
- \_\_\_\_\_  
Write-in

**MEMBER OF REPUBLICAN COUNTY COMMITTEE  
2 YEAR TERM  
VOTE FOR NO MORE THAN TWO**

- SCOTT WALLS
- JOHNATHAN (JOHN) HYDE
- \_\_\_\_\_  
Write-in
- \_\_\_\_\_  
Write-in

**LIEUTENANT GOVERNOR  
VOTE FOR ONE**

- JOHN VENTRE  
WESTMORELAND COUNTY
- JASON RICHEY  
ALLEGHENY COUNTY
- \_\_\_\_\_  
Write-in

**REPRESENTATIVE IN CONGRESS  
13TH DISTRICT  
VOTE FOR ONE**

- JOHN JOYCE  
BLAIR COUNTY
- \_\_\_\_\_  
Write-in

**HUNTINGDON COUNTY  
BOARD OF ELECTIONS**

*Scott Walls*  
*Patricia Reeder*  
*Jeffrey Thomas*

WALKER

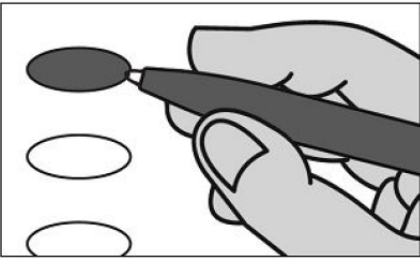
Typ:04 Seq:0055 Spl:01

# OFFICIAL REPUBLICAN GENERAL PRIMARY BALLOT

Huntingdon County

Commonwealth of Pennsylvania

MAY 19, 2026



### INSTRUCTIONS TO VOTER:

1. To vote you must blacken the oval (●) completely. An oval (●) blackened to the left of the name of any candidate indicates a vote for that candidate.
2. To vote for a person whose name is not on the ballot, you must blacken the oval (●) to the left of the line provided, and write or print the name in the blank space provided for that purpose.
3. Use only a black pen.
4. If you make a mistake, DO NOT CORRECT. Ask for a new ballot.
5. Do not fold the ballot unless voting by absentee or mail-in ballot.
6. WARNING: If you receive an absentee or mail-in ballot and return your voted ballot by the deadline, you may not vote at your polling place on election day. If you are unable to return your voted absentee or mail-in ballot by the deadline, you may only vote a provisional ballot at your polling place on election day, unless you surrender your absentee or mail-in ballot and return envelope containing the Voter's Declaration to the judge of elections to be voided to vote by regular ballot.

### SENATOR IN THE GENERAL ASSEMBLY 30TH DISTRICT VOTE FOR ONE

- JUDY WARD  
BLAIR COUNTY
- \_\_\_\_\_  
Write-in

### REPRESENTATIVE IN THE GENERAL ASSEMBLY 80TH DISTRICT VOTE FOR ONE

- SCOTT D BARGER  
BLAIR COUNTY
- \_\_\_\_\_  
Write-in

### MEMBER OF REPUBLICAN STATE COMMITTEE 31st DISTRICT VOTE FOR NOT MORE THAN TWO, ELECTING 1 MALE AND 1 FEMALE

- JULIA B WILT  
HUNTINGDON COUNTY FEMALE
- STEVEN CAROWICK JR  
HUNTINGDON COUNTY MALE
- \_\_\_\_\_  
Write-in
- \_\_\_\_\_  
Write-in

### GOVERNOR VOTE FOR ONE

- STACY GARRITY  
BRADFORD COUNTY
- \_\_\_\_\_  
Write-in

### MEMBER OF REPUBLICAN COUNTY COMMITTEE 2 YEAR TERM VOTE FOR NO MORE THAN TWO

- DAN FERRELL
- KAREN K GILLILAND
- \_\_\_\_\_  
Write-in
- \_\_\_\_\_  
Write-in

### LIEUTENANT GOVERNOR VOTE FOR ONE

- JOHN VENTRE  
WESTMORELAND COUNTY
- JASON RICHEY  
ALLEGHENY COUNTY
- \_\_\_\_\_  
Write-in

### REPRESENTATIVE IN CONGRESS 13TH DISTRICT VOTE FOR ONE

- JOHN JOYCE  
BLAIR COUNTY
- \_\_\_\_\_  
Write-in

### HUNTINGDON COUNTY BOARD OF ELECTIONS

*Scott Walk*  
*Patricia Reeder*  
*Jeffrey Thomas*

WARRIORS MARK

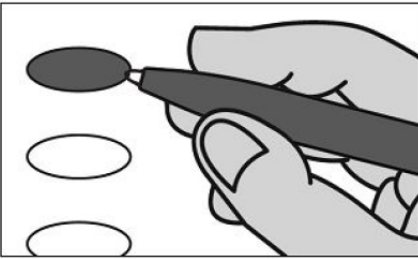
Typ:04 Seq:0056 Spl:01

# OFFICIAL REPUBLICAN GENERAL PRIMARY BALLOT

Huntingdon County

Commonwealth of Pennsylvania

MAY 19, 2026



**INSTRUCTIONS TO VOTER:**

1. To vote you must blacken the oval (●) completely. An oval (●) blackened to the left of the name of any candidate indicates a vote for that candidate.
2. To vote for a person whose name is not on the ballot, you must blacken the oval (●) to the left of the line provided, and write or print the name in the blank space provided for that purpose.
3. Use only a black pen.
4. If you make a mistake, DO NOT CORRECT. Ask for a new ballot.
5. Do not fold the ballot unless voting by absentee or mail-in ballot.
6. WARNING: If you receive an absentee or mail-in ballot and return your voted ballot by the deadline, you may not vote at your polling place on election day. If you are unable to return your voted absentee or mail-in ballot by the deadline, you may only vote a provisional ballot at your polling place on election day, unless you surrender your absentee or mail-in ballot and return envelope containing the Voter's Declaration to the judge of elections to be voided to vote by regular ballot.

**SENATOR IN THE GENERAL ASSEMBLY  
30TH DISTRICT  
VOTE FOR ONE**

- JUDY WARD  
BLAIR COUNTY
- \_\_\_\_\_  
Write-in

**REPRESENTATIVE IN THE GENERAL ASSEMBLY  
81ST DISTRICT  
VOTE FOR ONE**

- RICH IRVIN  
HUNTINGDON COUNTY
- \_\_\_\_\_  
Write-in

**MEMBER OF REPUBLICAN STATE COMMITTEE  
31st DISTRICT  
VOTE FOR NOT MORE THAN TWO,  
ELECTING 1 MALE AND 1 FEMALE**

- JULIA B WILT  
HUNTINGDON COUNTY FEMALE
- STEVEN CAROWICK JR  
HUNTINGDON COUNTY MALE
- \_\_\_\_\_  
Write-in
- \_\_\_\_\_  
Write-in

**GOVERNOR  
VOTE FOR ONE**

- STACY GARRITY  
BRADFORD COUNTY
- \_\_\_\_\_  
Write-in

**MEMBER OF REPUBLICAN COUNTY COMMITTEE  
2 YEAR TERM  
VOTE FOR NO MORE THAN TWO**

- PAUL J SHARUM
- \_\_\_\_\_  
Write-in
- \_\_\_\_\_  
Write-in

**LIEUTENANT GOVERNOR  
VOTE FOR ONE**

- JOHN VENTRE  
WESTMORELAND COUNTY
- JASON RICHEY  
ALLEGHENY COUNTY
- \_\_\_\_\_  
Write-in

**REPRESENTATIVE IN CONGRESS  
13TH DISTRICT  
VOTE FOR ONE**

- JOHN JOYCE  
BLAIR COUNTY
- \_\_\_\_\_  
Write-in

**HUNTINGDON COUNTY  
BOARD OF ELECTIONS**

*Scott Walk*  
*Patricia Reeder*  
*Jeffrey Thomas*

WEST

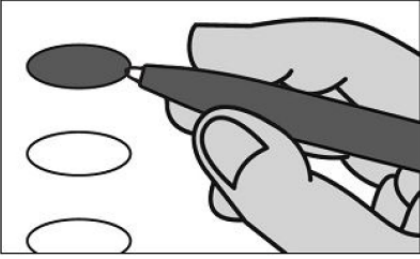
Typ:04 Seq:0057 Spl:01

# OFFICIAL REPUBLICAN GENERAL PRIMARY BALLOT

Huntingdon County

Commonwealth of Pennsylvania

MAY 19, 2026



**INSTRUCTIONS TO VOTER:**

1. To vote you must blacken the oval (●) completely. An oval (●) blackened to the left of the name of any candidate indicates a vote for that candidate.
2. To vote for a person whose name is not on the ballot, you must blacken the oval (●) to the left of the line provided, and write or print the name in the blank space provided for that purpose.
3. Use only a black pen.
4. If you make a mistake, DO NOT CORRECT. Ask for a new ballot.
5. Do not fold the ballot unless voting by absentee or mail-in ballot.
6. WARNING: If you receive an absentee or mail-in ballot and return your voted ballot by the deadline, you may not vote at your polling place on election day. If you are unable to return your voted absentee or mail-in ballot by the deadline, you may only vote a provisional ballot at your polling place on election day, unless you surrender your absentee or mail-in ballot and return envelope containing the Voter's Declaration to the judge of elections to be voided to vote by regular ballot.

**SENATOR IN THE GENERAL ASSEMBLY  
30TH DISTRICT  
VOTE FOR ONE**

- JUDY WARD  
BLAIR COUNTY
- \_\_\_\_\_  
Write-in

**REPRESENTATIVE IN THE GENERAL ASSEMBLY  
81ST DISTRICT  
VOTE FOR ONE**

- RICH IRVIN  
HUNTINGDON COUNTY
- \_\_\_\_\_  
Write-in

**MEMBER OF REPUBLICAN STATE COMMITTEE  
31st DISTRICT  
VOTE FOR NOT MORE THAN TWO,  
ELECTING 1 MALE AND 1 FEMALE**

- JULIA B WILT  
HUNTINGDON COUNTY FEMALE
- STEVEN CAROWICK JR  
HUNTINGDON COUNTY MALE
- \_\_\_\_\_  
Write-in
- \_\_\_\_\_  
Write-in

**GOVERNOR  
VOTE FOR ONE**

- STACY GARRITY  
BRADFORD COUNTY
- \_\_\_\_\_  
Write-in

**MEMBER OF REPUBLICAN COUNTY COMMITTEE  
2 YEAR TERM  
VOTE FOR NO MORE THAN TWO**

- \_\_\_\_\_  
Write-in
- \_\_\_\_\_  
Write-in

**LIEUTENANT GOVERNOR  
VOTE FOR ONE**

- JOHN VENTRE  
WESTMORELAND COUNTY
- JASON RICHEY  
ALLEGHENY COUNTY
- \_\_\_\_\_  
Write-in

**REPRESENTATIVE IN CONGRESS  
13TH DISTRICT  
VOTE FOR ONE**

- JOHN JOYCE  
BLAIR COUNTY
- \_\_\_\_\_  
Write-in

**HUNTINGDON COUNTY  
BOARD OF ELECTIONS**

*Scott Walk*  
*Patricia Reeder*  
*Jeffrey Thomas*

WOOD

Typ:04 Seq:0058 Spl:01