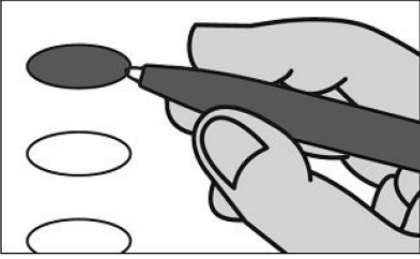


OFFICIAL DEMOCRATIC GENERAL PRIMARY BALLOT

Huntingdon County

Commonwealth of Pennsylvania

MAY 19, 2026



INSTRUCTIONS TO VOTER:

1. To vote you must blacken the oval (●) completely. An oval (●) blackened to the left of the name of any candidate indicates a vote for that candidate.
2. To vote for a person whose name is not on the ballot, you must blacken the oval (●) to the left of the line provided, and write or print the name in the blank space provided for that purpose.
3. Use only a black pen.
4. If you make a mistake, DO NOT CORRECT. Ask for a new ballot.
5. Do not fold the ballot unless voting by absentee or mail-in ballot.
6. WARNING: If you receive an absentee or mail-in ballot and return your voted ballot by the deadline, you may not vote at your polling place on election day. If you are unable to return your voted absentee or mail-in ballot by the deadline, you may only vote a provisional ballot at your polling place on election day, unless you surrender your absentee or mail-in ballot and return envelope containing the Voter's Declaration to the judge of elections to be voided to vote by regular ballot.

**SENATOR IN THE GENERAL ASSEMBLY
30TH DISTRICT
VOTE FOR ONE**

- SEAN STEEG
HUNTINGDON COUNTY
- _____
Write-in

**REPRESENTATIVE IN THE GENERAL ASSEMBLY
81ST DISTRICT
VOTE FOR ONE**

- CALEB J DONAHUE
HUNTINGDON COUNTY
- _____
Write-in

**MEMBER OF THE DEMOCRATIC STATE COMMITTEE
31st DISTRICT
VOTE FOR ONE**

- DENNIS PLANE
HUNTINGDON COUNTY MALE
- _____
Write-in

**MEMBER OF DEMOCRATIC COUNTY COMMITTEE
4 YEAR TERM
VOTE FOR NO MORE THAN TWO**

- _____
Write-in
- _____
Write-in

**GOVERNOR
VOTE FOR ONE**

- JOSH SHAPIRO
MONTGOMERY COUNTY
- _____
Write-in

**LIEUTENANT GOVERNOR
VOTE FOR ONE**

- AUSTIN DAVIS
ALLEGHENY COUNTY
- _____
Write-in

**REPRESENTATIVE IN CONGRESS
13TH DISTRICT
VOTE FOR ONE**

- BETH FARNHAM
ADAMS COUNTY
- _____
Write-in

**HUNTINGDON COUNTY
BOARD OF ELECTIONS**

Scott Walk
Patricia Reed
Jeffrey Thomas

ALEXANDRIA

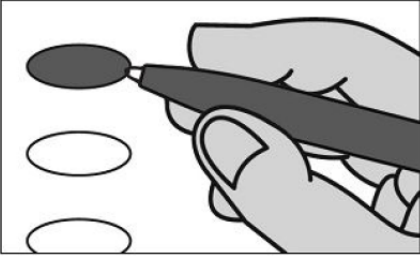
Typ:01 Seq:0001 Spl:01

OFFICIAL DEMOCRATIC GENERAL PRIMARY BALLOT

Huntingdon County

Commonwealth of Pennsylvania

MAY 19, 2026



INSTRUCTIONS TO VOTER:

1. To vote you must blacken the oval (●) completely. An oval (●) blackened to the left of the name of any candidate indicates a vote for that candidate.
2. To vote for a person whose name is not on the ballot, you must blacken the oval (●) to the left of the line provided, and write or print the name in the blank space provided for that purpose.
3. Use only a black pen.
4. If you make a mistake, DO NOT CORRECT. Ask for a new ballot.
5. Do not fold the ballot unless voting by absentee or mail-in ballot.
6. WARNING: If you receive an absentee or mail-in ballot and return your voted ballot by the deadline, you may not vote at your polling place on election day. If you are unable to return your voted absentee or mail-in ballot by the deadline, you may only vote a provisional ballot at your polling place on election day, unless you surrender your absentee or mail-in ballot and return envelope containing the Voter's Declaration to the judge of elections to be voided to vote by regular ballot.

**SENATOR IN THE GENERAL ASSEMBLY
30TH DISTRICT
VOTE FOR ONE**

- SEAN STEEG
HUNTINGDON COUNTY
- _____
Write-in

**REPRESENTATIVE IN THE GENERAL ASSEMBLY
81ST DISTRICT
VOTE FOR ONE**

- CALEB J DONAHUE
HUNTINGDON COUNTY
- _____
Write-in

**MEMBER OF THE DEMOCRATIC STATE COMMITTEE
31st DISTRICT
VOTE FOR ONE**

- DENNIS PLANE
HUNTINGDON COUNTY MALE
- _____
Write-in

**MEMBER OF DEMOCRATIC COUNTY COMMITTEE
VOTE FOR NO MORE THAN TWO**

- _____
Write-in
- _____
Write-in

**GOVERNOR
VOTE FOR ONE**

- JOSH SHAPIRO
MONTGOMERY COUNTY
- _____
Write-in

**LIEUTENANT GOVERNOR
VOTE FOR ONE**

- AUSTIN DAVIS
ALLEGHENY COUNTY
- _____
Write-in

**REPRESENTATIVE IN CONGRESS
13TH DISTRICT
VOTE FOR ONE**

- BETH FARNHAM
ADAMS COUNTY
- _____
Write-in

**HUNTINGDON COUNTY
BOARD OF ELECTIONS**

Scott Walk
Patricia Reeder
Jeffrey Thomas

BARREE

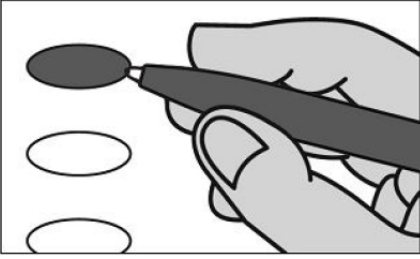
Typ:01 Seq:0002 Spl:01

OFFICIAL DEMOCRATIC GENERAL PRIMARY BALLOT

Huntingdon County

Commonwealth of Pennsylvania

MAY 19, 2026



INSTRUCTIONS TO VOTER:

1. To vote you must blacken the oval (●) completely. An oval (●) blackened to the left of the name of any candidate indicates a vote for that candidate.
2. To vote for a person whose name is not on the ballot, you must blacken the oval (●) to the left of the line provided, and write or print the name in the blank space provided for that purpose.
3. Use only a black pen.
4. If you make a mistake, DO NOT CORRECT. Ask for a new ballot.
5. Do not fold the ballot unless voting by absentee or mail-in ballot.
6. WARNING: If you receive an absentee or mail-in ballot and return your voted ballot by the deadline, you may not vote at your polling place on election day. If you are unable to return your voted absentee or mail-in ballot by the deadline, you may only vote a provisional ballot at your polling place on election day, unless you surrender your absentee or mail-in ballot and return envelope containing the Voter's Declaration to the judge of elections to be voided to vote by regular ballot.

SENATOR IN THE GENERAL ASSEMBLY 30TH DISTRICT VOTE FOR ONE

- SEAN STEEG
HUNTINGDON COUNTY
- _____
Write-in

REPRESENTATIVE IN THE GENERAL ASSEMBLY 80TH DISTRICT VOTE FOR ONE

- SARAH HOLLAND
BLAIR COUNTY
- _____
Write-in

MEMBER OF THE DEMOCRATIC STATE COMMITTEE 31st DISTRICT VOTE FOR ONE

- DENNIS PLANE
HUNTINGDON COUNTY MALE
- _____
Write-in

MEMBER OF DEMOCRATIC COUNTY COMMITTEE VOTE FOR NO MORE THAN TWO

- _____
Write-in
- _____
Write-in

GOVERNOR VOTE FOR ONE

- JOSH SHAPIRO
MONTGOMERY COUNTY
- _____
Write-in

LIEUTENANT GOVERNOR VOTE FOR ONE

- AUSTIN DAVIS
ALLEGHENY COUNTY
- _____
Write-in

REPRESENTATIVE IN CONGRESS 13TH DISTRICT VOTE FOR ONE

- BETH FARNHAM
ADAMS COUNTY
- _____
Write-in

HUNTINGDON COUNTY BOARD OF ELECTIONS

Scott Walk
Patricia Reed
Jeffrey Thomas

BIRMINGHAM

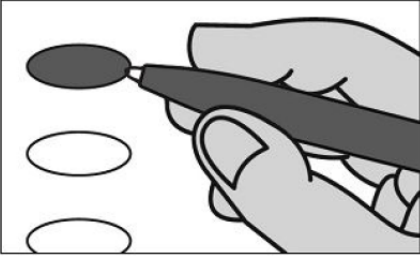
Typ:01 Seq:0003 Spl:01

OFFICIAL DEMOCRATIC GENERAL PRIMARY BALLOT

Huntingdon County

Commonwealth of Pennsylvania

MAY 19, 2026



INSTRUCTIONS TO VOTER:

1. To vote you must blacken the oval (●) completely. An oval (●) blackened to the left of the name of any candidate indicates a vote for that candidate.
2. To vote for a person whose name is not on the ballot, you must blacken the oval (●) to the left of the line provided, and write or print the name in the blank space provided for that purpose.
3. Use only a black pen.
4. If you make a mistake, DO NOT CORRECT. Ask for a new ballot.
5. Do not fold the ballot unless voting by absentee or mail-in ballot.
6. WARNING: If you receive an absentee or mail-in ballot and return your voted ballot by the deadline, you may not vote at your polling place on election day. If you are unable to return your voted absentee or mail-in ballot by the deadline, you may only vote a provisional ballot at your polling place on election day, unless you surrender your absentee or mail-in ballot and return envelope containing the Voter's Declaration to the judge of elections to be voided to vote by regular ballot.

**SENATOR IN THE GENERAL ASSEMBLY
30TH DISTRICT
VOTE FOR ONE**

- SEAN STEEG
HUNTINGDON COUNTY
- _____
Write-in

**REPRESENTATIVE IN THE GENERAL ASSEMBLY
81ST DISTRICT
VOTE FOR ONE**

- CALEB J DONAHUE
HUNTINGDON COUNTY
- _____
Write-in

**MEMBER OF THE DEMOCRATIC STATE COMMITTEE
31st DISTRICT
VOTE FOR ONE**

- DENNIS PLANE
HUNTINGDON COUNTY MALE
- _____
Write-in

**MEMBER OF DEMOCRATIC COUNTY COMMITTEE
VOTE FOR NO MORE THAN TWO**

- CLIFFORD J HAWKINS JR`
- _____
Write-in
- _____
Write-in

**GOVERNOR
VOTE FOR ONE**

- JOSH SHAPIRO
MONTGOMERY COUNTY
- _____
Write-in

**LIEUTENANT GOVERNOR
VOTE FOR ONE**

- AUSTIN DAVIS
ALLEGHENY COUNTY
- _____
Write-in

**REPRESENTATIVE IN CONGRESS
13TH DISTRICT
VOTE FOR ONE**

- BETH FARNHAM
ADAMS COUNTY
- _____
Write-in

**HUNTINGDON COUNTY
BOARD OF ELECTIONS**

Scott Walk
Patricia Reed
Jeffrey Thomas

BRADY

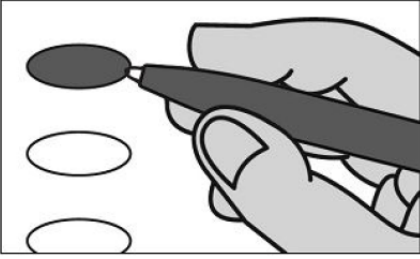
Typ:01 Seq:0004 Spl:01

OFFICIAL DEMOCRATIC GENERAL PRIMARY BALLOT

Huntingdon County

Commonwealth of Pennsylvania

MAY 19, 2026



INSTRUCTIONS TO VOTER:

1. To vote you must blacken the oval (●) completely. An oval (●) blackened to the left of the name of any candidate indicates a vote for that candidate.
2. To vote for a person whose name is not on the ballot, you must blacken the oval (●) to the left of the line provided, and write or print the name in the blank space provided for that purpose.
3. Use only a black pen.
4. If you make a mistake, DO NOT CORRECT. Ask for a new ballot.
5. Do not fold the ballot unless voting by absentee or mail-in ballot.
6. WARNING: If you receive an absentee or mail-in ballot and return your voted ballot by the deadline, you may not vote at your polling place on election day. If you are unable to return your voted absentee or mail-in ballot by the deadline, you may only vote a provisional ballot at your polling place on election day, unless you surrender your absentee or mail-in ballot and return envelope containing the Voter's Declaration to the judge of elections to be voided to vote by regular ballot.

**SENATOR IN THE GENERAL ASSEMBLY
30TH DISTRICT
VOTE FOR ONE**

- SEAN STEEG
HUNTINGDON COUNTY
- _____
Write-in

**REPRESENTATIVE IN THE GENERAL ASSEMBLY
81ST DISTRICT
VOTE FOR ONE**

- CALEB J DONAHUE
HUNTINGDON COUNTY
- _____
Write-in

**MEMBER OF THE DEMOCRATIC STATE COMMITTEE
31st DISTRICT
VOTE FOR ONE**

- DENNIS PLANE
HUNTINGDON COUNTY MALE
- _____
Write-in

**MEMBER OF DEMOCRATIC COUNTY COMMITTEE
VOTE FOR NO MORE THAN TWO**

- _____
Write-in
- _____
Write-in

**GOVERNOR
VOTE FOR ONE**

- JOSH SHAPIRO
MONTGOMERY COUNTY
- _____
Write-in

**LIEUTENANT GOVERNOR
VOTE FOR ONE**

- AUSTIN DAVIS
ALLEGHENY COUNTY
- _____
Write-in

**REPRESENTATIVE IN CONGRESS
13TH DISTRICT
VOTE FOR ONE**

- BETH FARNHAM
ADAMS COUNTY
- _____
Write-in

**HUNTINGDON COUNTY
BOARD OF ELECTIONS**

Scott Walk
Patricia Reed
Jeffrey Thomas

BROAD TOP

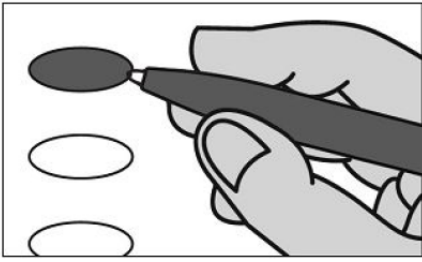
Typ:01 Seq:0005 Spl:01

OFFICIAL DEMOCRATIC GENERAL PRIMARY BALLOT

Huntingdon County

Commonwealth of Pennsylvania

MAY 19, 2026



INSTRUCTIONS TO VOTER:

1. To vote you must blacken the oval (●) completely. An oval (●) blackened to the left of the name of any candidate indicates a vote for that candidate.
2. To vote for a person whose name is not on the ballot, you must blacken the oval (●) to the left of the line provided, and write or print the name in the blank space provided for that purpose.
3. Use only a black pen.
4. If you make a mistake, DO NOT CORRECT. Ask for a new ballot.
5. Do not fold the ballot unless voting by absentee or mail-in ballot.
6. WARNING: If you receive an absentee or mail-in ballot and return your voted ballot by the deadline, you may not vote at your polling place on election day. If you are unable to return your voted absentee or mail-in ballot by the deadline, you may only vote a provisional ballot at your polling place on election day, unless you surrender your absentee or mail-in ballot and return envelope containing the Voter's Declaration to the judge of elections to be voided to vote by regular ballot.

SENATOR IN THE GENERAL ASSEMBLY 30TH DISTRICT VOTE FOR ONE

- SEAN STEEG
HUNTINGDON COUNTY
- _____
Write-in

REPRESENTATIVE IN THE GENERAL ASSEMBLY 81ST DISTRICT VOTE FOR ONE

- CALEB J DONAHUE
HUNTINGDON COUNTY
- _____
Write-in

MEMBER OF THE DEMOCRATIC STATE COMMITTEE 31st DISTRICT VOTE FOR ONE

- DENNIS PLANE
HUNTINGDON COUNTY MALE
- _____
Write-in

MEMBER OF DEMOCRATIC COUNTY COMMITTEE VOTE FOR NO MORE THAN TWO

- _____
Write-in
- _____
Write-in

GOVERNOR VOTE FOR ONE

- JOSH SHAPIRO
MONTGOMERY COUNTY
- _____
Write-in

LIEUTENANT GOVERNOR VOTE FOR ONE

- AUSTIN DAVIS
ALLEGHENY COUNTY
- _____
Write-in

REPRESENTATIVE IN CONGRESS 13TH DISTRICT VOTE FOR ONE

- BETH FARNHAM
ADAMS COUNTY
- _____
Write-in

HUNTINGDON COUNTY BOARD OF ELECTIONS

Scott Walk
Patricia Reeder
Jeffrey Thomas

CARBON

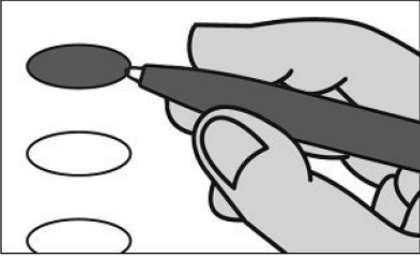
Typ:01 Seq:0006 Spl:01

OFFICIAL DEMOCRATIC GENERAL PRIMARY BALLOT

Huntingdon County

Commonwealth of Pennsylvania

MAY 19, 2026



INSTRUCTIONS TO VOTER:

1. To vote you must blacken the oval (●) completely. An oval (●) blackened to the left of the name of any candidate indicates a vote for that candidate.
2. To vote for a person whose name is not on the ballot, you must blacken the oval (●) to the left of the line provided, and write or print the name in the blank space provided for that purpose.
3. Use only a black pen.
4. If you make a mistake, DO NOT CORRECT. Ask for a new ballot.
5. Do not fold the ballot unless voting by absentee or mail-in ballot.
6. WARNING: If you receive an absentee or mail-in ballot and return your voted ballot by the deadline, you may not vote at your polling place on election day. If you are unable to return your voted absentee or mail-in ballot by the deadline, you may only vote a provisional ballot at your polling place on election day, unless you surrender your absentee or mail-in ballot and return envelope containing the Voter's Declaration to the judge of elections to be voided to vote by regular ballot.

SENATOR IN THE GENERAL ASSEMBLY 30TH DISTRICT VOTE FOR ONE

- SEAN STEEG
HUNTINGDON COUNTY
- _____
Write-in

REPRESENTATIVE IN THE GENERAL ASSEMBLY 81ST DISTRICT VOTE FOR ONE

- CALEB J DONAHUE
HUNTINGDON COUNTY
- _____
Write-in

MEMBER OF THE DEMOCRATIC STATE COMMITTEE 31st DISTRICT VOTE FOR ONE

- DENNIS PLANE
HUNTINGDON COUNTY MALE
- _____
Write-in

MEMBER OF DEMOCRATIC COUNTY COMMITTEE VOTE FOR NO MORE THAN TWO

- _____
Write-in
- _____
Write-in

GOVERNOR VOTE FOR ONE

- JOSH SHAPIRO
MONTGOMERY COUNTY
- _____
Write-in

LIEUTENANT GOVERNOR VOTE FOR ONE

- AUSTIN DAVIS
ALLEGHENY COUNTY
- _____
Write-in

REPRESENTATIVE IN CONGRESS 13TH DISTRICT VOTE FOR ONE

- BETH FARNHAM
ADAMS COUNTY
- _____
Write-in

HUNTINGDON COUNTY BOARD OF ELECTIONS

Scott Walk
Patricia Reed
Jeffrey Thomas

CASSVILLE

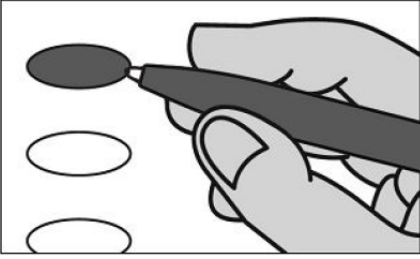
Typ:01 Seq:0008 Spl:01

OFFICIAL DEMOCRATIC GENERAL PRIMARY BALLOT

Huntingdon County

Commonwealth of Pennsylvania

MAY 19, 2026



INSTRUCTIONS TO VOTER:

1. To vote you must blacken the oval (●) completely. An oval (●) blackened to the left of the name of any candidate indicates a vote for that candidate.
2. To vote for a person whose name is not on the ballot, you must blacken the oval (●) to the left of the line provided, and write or print the name in the blank space provided for that purpose.
3. Use only a black pen.
4. If you make a mistake, DO NOT CORRECT. Ask for a new ballot.
5. Do not fold the ballot unless voting by absentee or mail-in ballot.
6. WARNING: If you receive an absentee or mail-in ballot and return your voted ballot by the deadline, you may not vote at your polling place on election day. If you are unable to return your voted absentee or mail-in ballot by the deadline, you may only vote a provisional ballot at your polling place on election day, unless you surrender your absentee or mail-in ballot and return envelope containing the Voter's Declaration to the judge of elections to be voided to vote by regular ballot.

SENATOR IN THE GENERAL ASSEMBLY 30TH DISTRICT VOTE FOR ONE

- SEAN STEEG
HUNTINGDON COUNTY
- _____
Write-in

REPRESENTATIVE IN THE GENERAL ASSEMBLY 81ST DISTRICT VOTE FOR ONE

- CALEB J DONAHUE
HUNTINGDON COUNTY
- _____
Write-in

MEMBER OF THE DEMOCRATIC STATE COMMITTEE 31st DISTRICT VOTE FOR ONE

- DENNIS PLANE
HUNTINGDON COUNTY MALE
- _____
Write-in

MEMBER OF DEMOCRATIC COUNTY COMMITTEE VOTE FOR NO MORE THAN TWO

- _____
Write-in
- _____
Write-in

GOVERNOR VOTE FOR ONE

- JOSH SHAPIRO
MONTGOMERY COUNTY
- _____
Write-in

LIEUTENANT GOVERNOR VOTE FOR ONE

- AUSTIN DAVIS
ALLEGHENY COUNTY
- _____
Write-in

REPRESENTATIVE IN CONGRESS 13TH DISTRICT VOTE FOR ONE

- BETH FARNHAM
ADAMS COUNTY
- _____
Write-in

HUNTINGDON COUNTY BOARD OF ELECTIONS

Scott Walk
Patricia Reed
Jeffrey Thomas

CLAY

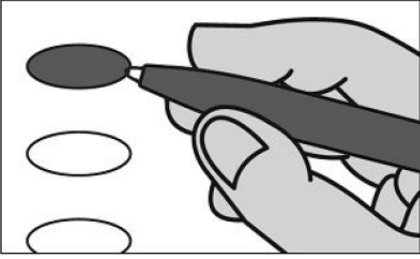
Typ:01 Seq:0009 Spl:01

OFFICIAL DEMOCRATIC GENERAL PRIMARY BALLOT

Huntingdon County

Commonwealth of Pennsylvania

MAY 19, 2026



INSTRUCTIONS TO VOTER:

1. To vote you must blacken the oval (●) completely. An oval (●) blackened to the left of the name of any candidate indicates a vote for that candidate.
2. To vote for a person whose name is not on the ballot, you must blacken the oval (●) to the left of the line provided, and write or print the name in the blank space provided for that purpose.
3. Use only a black pen.
4. If you make a mistake, DO NOT CORRECT. Ask for a new ballot.
5. Do not fold the ballot unless voting by absentee or mail-in ballot.
6. WARNING: If you receive an absentee or mail-in ballot and return your voted ballot by the deadline, you may not vote at your polling place on election day. If you are unable to return your voted absentee or mail-in ballot by the deadline, you may only vote a provisional ballot at your polling place on election day, unless you surrender your absentee or mail-in ballot and return envelope containing the Voter's Declaration to the judge of elections to be voided to vote by regular ballot.

SENATOR IN THE GENERAL ASSEMBLY 30TH DISTRICT VOTE FOR ONE

- SEAN STEEG
HUNTINGDON COUNTY
- _____
Write-in

REPRESENTATIVE IN THE GENERAL ASSEMBLY 81ST DISTRICT VOTE FOR ONE

- CALEB J DONAHUE
HUNTINGDON COUNTY
- _____
Write-in

MEMBER OF THE DEMOCRATIC STATE COMMITTEE 31st DISTRICT VOTE FOR ONE

- DENNIS PLANE
HUNTINGDON COUNTY MALE
- _____
Write-in

MEMBER OF DEMOCRATIC COUNTY COMMITTEE VOTE FOR NO MORE THAN TWO

- _____
Write-in
- _____
Write-in

GOVERNOR VOTE FOR ONE

- JOSH SHAPIRO
MONTGOMERY COUNTY
- _____
Write-in

LIEUTENANT GOVERNOR VOTE FOR ONE

- AUSTIN DAVIS
ALLEGHENY COUNTY
- _____
Write-in

REPRESENTATIVE IN CONGRESS 13TH DISTRICT VOTE FOR ONE

- BETH FARNHAM
ADAMS COUNTY
- _____
Write-in

HUNTINGDON COUNTY BOARD OF ELECTIONS

Scott Walk
Patricia Reeder
Jeffrey Thomas

COALMONT

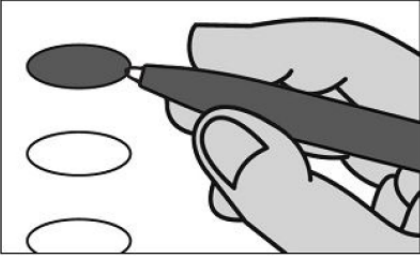
Typ:01 Seq:0010 Spl:01

OFFICIAL DEMOCRATIC GENERAL PRIMARY BALLOT

Huntingdon County

Commonwealth of Pennsylvania

MAY 19, 2026



INSTRUCTIONS TO VOTER:

1. To vote you must blacken the oval (●) completely. An oval (●) blackened to the left of the name of any candidate indicates a vote for that candidate.
2. To vote for a person whose name is not on the ballot, you must blacken the oval (●) to the left of the line provided, and write or print the name in the blank space provided for that purpose.
3. Use only a black pen.
4. If you make a mistake, DO NOT CORRECT. Ask for a new ballot.
5. Do not fold the ballot unless voting by absentee or mail-in ballot.
6. WARNING: If you receive an absentee or mail-in ballot and return your voted ballot by the deadline, you may not vote at your polling place on election day. If you are unable to return your voted absentee or mail-in ballot by the deadline, you may only vote a provisional ballot at your polling place on election day, unless you surrender your absentee or mail-in ballot and return envelope containing the Voter's Declaration to the judge of elections to be voided to vote by regular ballot.

**SENATOR IN THE GENERAL ASSEMBLY
30TH DISTRICT
VOTE FOR ONE**

- SEAN STEEG
HUNTINGDON COUNTY
- _____
Write-in

**REPRESENTATIVE IN THE GENERAL ASSEMBLY
81ST DISTRICT
VOTE FOR ONE**

- CALEB J DONAHUE
HUNTINGDON COUNTY
- _____
Write-in

**MEMBER OF THE DEMOCRATIC STATE COMMITTEE
31st DISTRICT
VOTE FOR ONE**

- DENNIS PLANE
HUNTINGDON COUNTY MALE
- _____
Write-in

**MEMBER OF DEMOCRATIC COUNTY COMMITTEE
VOTE FOR NO MORE THAN TWO**

- ANDREW HARTZELL
- _____
Write-in
- _____
Write-in

**GOVERNOR
VOTE FOR ONE**

- JOSH SHAPIRO
MONTGOMERY COUNTY
- _____
Write-in

**LIEUTENANT GOVERNOR
VOTE FOR ONE**

- AUSTIN DAVIS
ALLEGHENY COUNTY
- _____
Write-in

**REPRESENTATIVE IN CONGRESS
13TH DISTRICT
VOTE FOR ONE**

- BETH FARNHAM
ADAMS COUNTY
- _____
Write-in

**HUNTINGDON COUNTY
BOARD OF ELECTIONS**

Scott Walk
Patricia Reed
Jeffrey Thomas

CROMWELL

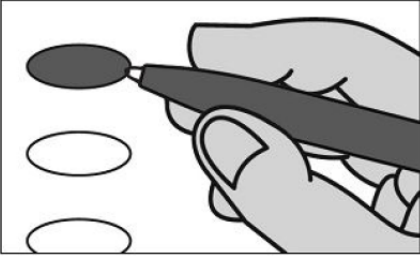
Typ:01 Seq:0011 Spl:01

OFFICIAL DEMOCRATIC GENERAL PRIMARY BALLOT

Huntingdon County

Commonwealth of Pennsylvania

MAY 19, 2026



INSTRUCTIONS TO VOTER:

1. To vote you must blacken the oval (●) completely. An oval (●) blackened to the left of the name of any candidate indicates a vote for that candidate.
2. To vote for a person whose name is not on the ballot, you must blacken the oval (●) to the left of the line provided, and write or print the name in the blank space provided for that purpose.
3. Use only a black pen.
4. If you make a mistake, DO NOT CORRECT. Ask for a new ballot.
5. Do not fold the ballot unless voting by absentee or mail-in ballot.
6. WARNING: If you receive an absentee or mail-in ballot and return your voted ballot by the deadline, you may not vote at your polling place on election day. If you are unable to return your voted absentee or mail-in ballot by the deadline, you may only vote a provisional ballot at your polling place on election day, unless you surrender your absentee or mail-in ballot and return envelope containing the Voter's Declaration to the judge of elections to be voided to vote by regular ballot.

SENATOR IN THE GENERAL ASSEMBLY 30TH DISTRICT VOTE FOR ONE

- SEAN STEEG
HUNTINGDON COUNTY
- _____
Write-in

REPRESENTATIVE IN THE GENERAL ASSEMBLY 81ST DISTRICT VOTE FOR ONE

- CALEB J DONAHUE
HUNTINGDON COUNTY
- _____
Write-in

MEMBER OF THE DEMOCRATIC STATE COMMITTEE 31st DISTRICT VOTE FOR ONE

- DENNIS PLANE
HUNTINGDON COUNTY MALE
- _____
Write-in

MEMBER OF DEMOCRATIC COUNTY COMMITTEE VOTE FOR NO MORE THAN TWO

- _____
Write-in
- _____
Write-in

GOVERNOR VOTE FOR ONE

- JOSH SHAPIRO
MONTGOMERY COUNTY
- _____
Write-in

LIEUTENANT GOVERNOR VOTE FOR ONE

- AUSTIN DAVIS
ALLEGHENY COUNTY
- _____
Write-in

REPRESENTATIVE IN CONGRESS 13TH DISTRICT VOTE FOR ONE

- BETH FARNHAM
ADAMS COUNTY
- _____
Write-in

HUNTINGDON COUNTY BOARD OF ELECTIONS

Scott Walk
Patricia Reeder
Jeffrey Thomas

DUBLIN

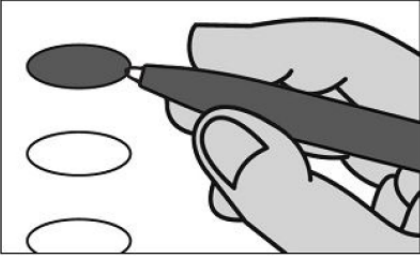
Typ:01 Seq:0012 Spl:01

OFFICIAL DEMOCRATIC GENERAL PRIMARY BALLOT

Huntingdon County

Commonwealth of Pennsylvania

MAY 19, 2026



INSTRUCTIONS TO VOTER:

1. To vote you must blacken the oval (●) completely. An oval (●) blackened to the left of the name of any candidate indicates a vote for that candidate.
2. To vote for a person whose name is not on the ballot, you must blacken the oval (●) to the left of the line provided, and write or print the name in the blank space provided for that purpose.
3. Use only a black pen.
4. If you make a mistake, DO NOT CORRECT. Ask for a new ballot.
5. Do not fold the ballot unless voting by absentee or mail-in ballot.
6. WARNING: If you receive an absentee or mail-in ballot and return your voted ballot by the deadline, you may not vote at your polling place on election day. If you are unable to return your voted absentee or mail-in ballot by the deadline, you may only vote a provisional ballot at your polling place on election day, unless you surrender your absentee or mail-in ballot and return envelope containing the Voter's Declaration to the judge of elections to be voided to vote by regular ballot.

SENATOR IN THE GENERAL ASSEMBLY 30TH DISTRICT VOTE FOR ONE

- SEAN STEEG
HUNTINGDON COUNTY
- _____
Write-in

REPRESENTATIVE IN THE GENERAL ASSEMBLY 81ST DISTRICT VOTE FOR ONE

- CALEB J DONAHUE
HUNTINGDON COUNTY
- _____
Write-in

MEMBER OF THE DEMOCRATIC STATE COMMITTEE 31st DISTRICT VOTE FOR ONE

- DENNIS PLANE
HUNTINGDON COUNTY MALE
- _____
Write-in

MEMBER OF DEMOCRATIC COUNTY COMMITTEE VOTE FOR NO MORE THAN TWO

- _____
Write-in
- _____
Write-in

GOVERNOR VOTE FOR ONE

- JOSH SHAPIRO
MONTGOMERY COUNTY
- _____
Write-in

LIEUTENANT GOVERNOR VOTE FOR ONE

- AUSTIN DAVIS
ALLEGHENY COUNTY
- _____
Write-in

REPRESENTATIVE IN CONGRESS 13TH DISTRICT VOTE FOR ONE

- BETH FARNHAM
ADAMS COUNTY
- _____
Write-in

HUNTINGDON COUNTY BOARD OF ELECTIONS

Scott Walk
Patricia Reeder
Jeffrey Thomas

DUDLEY

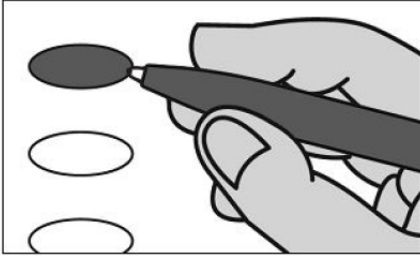
Typ:01 Seq:0013 Spl:01

OFFICIAL DEMOCRATIC GENERAL PRIMARY BALLOT

Huntingdon County

Commonwealth of Pennsylvania

MAY 19, 2026



INSTRUCTIONS TO VOTER:

1. To vote you must blacken the oval (●) completely. An oval (●) blackened to the left of the name of any candidate indicates a vote for that candidate.
2. To vote for a person whose name is not on the ballot, you must blacken the oval (●) to the left of the line provided, and write or print the name in the blank space provided for that purpose.
3. Use only a black pen.
4. If you make a mistake, DO NOT CORRECT. Ask for a new ballot.
5. Do not fold the ballot unless voting by absentee or mail-in ballot.
6. WARNING: If you receive an absentee or mail-in ballot and return your voted ballot by the deadline, you may not vote at your polling place on election day. If you are unable to return your voted absentee or mail-in ballot by the deadline, you may only vote a provisional ballot at your polling place on election day, unless you surrender your absentee or mail-in ballot and return envelope containing the Voter's Declaration to the judge of elections to be voided to vote by regular ballot.

**SENATOR IN THE GENERAL ASSEMBLY
30TH DISTRICT
VOTE FOR ONE**

- SEAN STEEG
HUNTINGDON COUNTY
- _____
Write-in

**REPRESENTATIVE IN THE GENERAL ASSEMBLY
80TH DISTRICT
VOTE FOR ONE**

- SARAH HOLLAND
BLAIR COUNTY
- _____
Write-in

**MEMBER OF THE DEMOCRATIC STATE COMMITTEE
31st DISTRICT
VOTE FOR ONE**

- DENNIS PLANE
HUNTINGDON COUNTY MALE
- _____
Write-in

**MEMBER OF DEMOCRATIC COUNTY COMMITTEE
VOTE FOR NO MORE THAN TWO**

- _____
Write-in
- _____
Write-in

**GOVERNOR
VOTE FOR ONE**

- JOSH SHAPIRO
MONTGOMERY COUNTY
- _____
Write-in

**LIEUTENANT GOVERNOR
VOTE FOR ONE**

- AUSTIN DAVIS
ALLEGHENY COUNTY
- _____
Write-in

**REPRESENTATIVE IN CONGRESS
13TH DISTRICT
VOTE FOR ONE**

- BETH FARNHAM
ADAMS COUNTY
- _____
Write-in

**HUNTINGDON COUNTY
BOARD OF ELECTIONS**

Scott Walk
Patricia Reed
Jeffrey Thomas

FRANKLIN

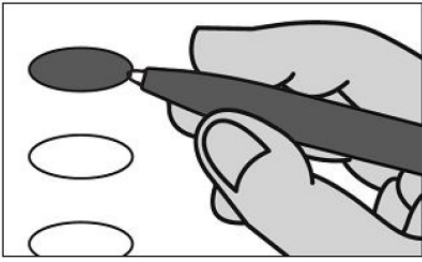
Typ:01 Seq:0014 Spl:01

OFFICIAL DEMOCRATIC GENERAL PRIMARY BALLOT

Huntingdon County

Commonwealth of Pennsylvania

MAY 19, 2026



INSTRUCTIONS TO VOTER:

1. To vote you must blacken the oval (●) completely. An oval (●) blackened to the left of the name of any candidate indicates a vote for that candidate.
2. To vote for a person whose name is not on the ballot, you must blacken the oval (●) to the left of the line provided, and write or print the name in the blank space provided for that purpose.
3. Use only a black pen.
4. If you make a mistake, DO NOT CORRECT. Ask for a new ballot.
5. Do not fold the ballot unless voting by absentee or mail-in ballot.
6. WARNING: If you receive an absentee or mail-in ballot and return your voted ballot by the deadline, you may not vote at your polling place on election day. If you are unable to return your voted absentee or mail-in ballot by the deadline, you may only vote a provisional ballot at your polling place on election day, unless you surrender your absentee or mail-in ballot and return envelope containing the Voter's Declaration to the judge of elections to be voided to vote by regular ballot.

**SENATOR IN THE GENERAL ASSEMBLY
30TH DISTRICT
VOTE FOR ONE**

- SEAN STEEG
HUNTINGDON COUNTY
- _____
Write-in

**REPRESENTATIVE IN THE GENERAL ASSEMBLY
81ST DISTRICT
VOTE FOR ONE**

- CALEB J DONAHUE
HUNTINGDON COUNTY
- _____
Write-in

**MEMBER OF THE DEMOCRATIC STATE COMMITTEE
31st DISTRICT
VOTE FOR ONE**

- DENNIS PLANE
HUNTINGDON COUNTY MALE
- _____
Write-in

**MEMBER OF DEMOCRATIC COUNTY COMMITTEE
VOTE FOR NO MORE THAN TWO**

- _____
Write-in
- _____
Write-in

**GOVERNOR
VOTE FOR ONE**

- JOSH SHAPIRO
MONTGOMERY COUNTY
- _____
Write-in

**LIEUTENANT GOVERNOR
VOTE FOR ONE**

- AUSTIN DAVIS
ALLEGHENY COUNTY
- _____
Write-in

**REPRESENTATIVE IN CONGRESS
13TH DISTRICT
VOTE FOR ONE**

- BETH FARNHAM
ADAMS COUNTY
- _____
Write-in

**HUNTINGDON COUNTY
BOARD OF ELECTIONS**

Scott Walk
Patricia Reed
Jeffrey Thomas

HENDERSON

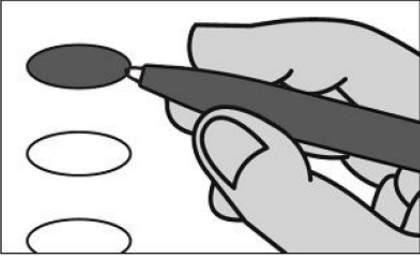
Typ:01 Seq:0015 Spl:01

OFFICIAL DEMOCRATIC GENERAL PRIMARY BALLOT

Huntingdon County

Commonwealth of Pennsylvania

MAY 19, 2026



INSTRUCTIONS TO VOTER:

1. To vote you must blacken the oval (●) completely. An oval (●) blackened to the left of the name of any candidate indicates a vote for that candidate.
2. To vote for a person whose name is not on the ballot, you must blacken the oval (●) to the left of the line provided, and write or print the name in the blank space provided for that purpose.
3. Use only a black pen.
4. If you make a mistake, DO NOT CORRECT. Ask for a new ballot.
5. Do not fold the ballot unless voting by absentee or mail-in ballot.
6. WARNING: If you receive an absentee or mail-in ballot and return your voted ballot by the deadline, you may not vote at your polling place on election day. If you are unable to return your voted absentee or mail-in ballot by the deadline, you may only vote a provisional ballot at your polling place on election day, unless you surrender your absentee or mail-in ballot and return envelope containing the Voter's Declaration to the judge of elections to be voided to vote by regular ballot.

**SENATOR IN THE GENERAL ASSEMBLY
30TH DISTRICT
VOTE FOR ONE**

- SEAN STEEG
HUNTINGDON COUNTY
- _____
Write-in

**REPRESENTATIVE IN THE GENERAL ASSEMBLY
81ST DISTRICT
VOTE FOR ONE**

- CALEB J DONAHUE
HUNTINGDON COUNTY
- _____
Write-in

**MEMBER OF THE DEMOCRATIC STATE COMMITTEE
31st DISTRICT
VOTE FOR ONE**

- DENNIS PLANE
HUNTINGDON COUNTY MALE
- _____
Write-in

**MEMBER OF DEMOCRATIC COUNTY COMMITTEE
VOTE FOR NO MORE THAN TWO**

- _____
Write-in
- _____
Write-in

**GOVERNOR
VOTE FOR ONE**

- JOSH SHAPIRO
MONTGOMERY COUNTY
- _____
Write-in

**LIEUTENANT GOVERNOR
VOTE FOR ONE**

- AUSTIN DAVIS
ALLEGHENY COUNTY
- _____
Write-in

**REPRESENTATIVE IN CONGRESS
13TH DISTRICT
VOTE FOR ONE**

- BETH FARNHAM
ADAMS COUNTY
- _____
Write-in

**HUNTINGDON COUNTY
BOARD OF ELECTIONS**

Scott Walk
Patricia Reeder
Jeffrey Thomas

HOPEWELL_HOPEWELL

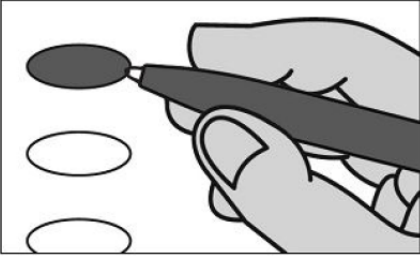
Typ:01 Seq:0016 Spl:01

OFFICIAL DEMOCRATIC GENERAL PRIMARY BALLOT

Huntingdon County

Commonwealth of Pennsylvania

MAY 19, 2026



INSTRUCTIONS TO VOTER:

1. To vote you must blacken the oval (●) completely. An oval (●) blackened to the left of the name of any candidate indicates a vote for that candidate.
2. To vote for a person whose name is not on the ballot, you must blacken the oval (●) to the left of the line provided, and write or print the name in the blank space provided for that purpose.
3. Use only a black pen.
4. If you make a mistake, DO NOT CORRECT. Ask for a new ballot.
5. Do not fold the ballot unless voting by absentee or mail-in ballot.
6. WARNING: If you receive an absentee or mail-in ballot and return your voted ballot by the deadline, you may not vote at your polling place on election day. If you are unable to return your voted absentee or mail-in ballot by the deadline, you may only vote a provisional ballot at your polling place on election day, unless you surrender your absentee or mail-in ballot and return envelope containing the Voter's Declaration to the judge of elections to be voided to vote by regular ballot.

**SENATOR IN THE GENERAL ASSEMBLY
30TH DISTRICT
VOTE FOR ONE**

- SEAN STEEG
HUNTINGDON COUNTY
- _____
Write-in

**REPRESENTATIVE IN THE GENERAL ASSEMBLY
81ST DISTRICT
VOTE FOR ONE**

- CALEB J DONAHUE
HUNTINGDON COUNTY
- _____
Write-in

**MEMBER OF THE DEMOCRATIC STATE COMMITTEE
31st DISTRICT
VOTE FOR ONE**

- DENNIS PLANE
HUNTINGDON COUNTY MALE
- _____
Write-in

**MEMBER OF DEMOCRATIC COUNTY COMMITTEE
VOTE FOR NO MORE THAN TWO**

- _____
Write-in
- _____
Write-in

**GOVERNOR
VOTE FOR ONE**

- JOSH SHAPIRO
MONTGOMERY COUNTY
- _____
Write-in

**LIEUTENANT GOVERNOR
VOTE FOR ONE**

- AUSTIN DAVIS
ALLEGHENY COUNTY
- _____
Write-in

**REPRESENTATIVE IN CONGRESS
13TH DISTRICT
VOTE FOR ONE**

- BETH FARNHAM
ADAMS COUNTY
- _____
Write-in

**HUNTINGDON COUNTY
BOARD OF ELECTIONS**

Scott Walk
Patricia Reeder
Jeffrey Thomas

HOPEWELL_PUTTSTOWN

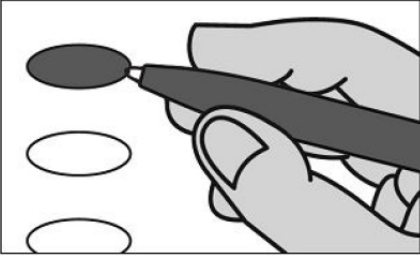
Typ:01 Seq:0017 Spl:01

OFFICIAL DEMOCRATIC GENERAL PRIMARY BALLOT

Huntingdon County

Commonwealth of Pennsylvania

MAY 19, 2026



INSTRUCTIONS TO VOTER:

1. To vote you must blacken the oval (●) completely. An oval (●) blackened to the left of the name of any candidate indicates a vote for that candidate.
2. To vote for a person whose name is not on the ballot, you must blacken the oval (●) to the left of the line provided, and write or print the name in the blank space provided for that purpose.
3. Use only a black pen.
4. If you make a mistake, DO NOT CORRECT. Ask for a new ballot.
5. Do not fold the ballot unless voting by absentee or mail-in ballot.
6. WARNING: If you receive an absentee or mail-in ballot and return your voted ballot by the deadline, you may not vote at your polling place on election day. If you are unable to return your voted absentee or mail-in ballot by the deadline, you may only vote a provisional ballot at your polling place on election day, unless you surrender your absentee or mail-in ballot and return envelope containing the Voter's Declaration to the judge of elections to be voided to vote by regular ballot.

SENATOR IN THE GENERAL ASSEMBLY 30TH DISTRICT VOTE FOR ONE

- SEAN STEEG
HUNTINGDON COUNTY
- _____
Write-in

REPRESENTATIVE IN THE GENERAL ASSEMBLY 81ST DISTRICT VOTE FOR ONE

- CALEB J DONAHUE
HUNTINGDON COUNTY
- _____
Write-in

MEMBER OF THE DEMOCRATIC STATE COMMITTEE 31st DISTRICT VOTE FOR ONE

- DENNIS PLANE
HUNTINGDON COUNTY MALE
- _____
Write-in

MEMBER OF DEMOCRATIC COUNTY COMMITTEE VOTE FOR NO MORE THAN TWO

- _____
Write-in
- _____
Write-in

GOVERNOR VOTE FOR ONE

- JOSH SHAPIRO
MONTGOMERY COUNTY
- _____
Write-in

LIEUTENANT GOVERNOR VOTE FOR ONE

- AUSTIN DAVIS
ALLEGHENY COUNTY
- _____
Write-in

REPRESENTATIVE IN CONGRESS 13TH DISTRICT VOTE FOR ONE

- BETH FARNHAM
ADAMS COUNTY
- _____
Write-in

HUNTINGDON COUNTY BOARD OF ELECTIONS

Scott Walk
Patricia Reed
Jeffrey Thomas

HUNTINGDON 1

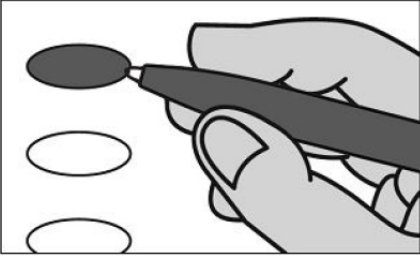
Typ:01 Seq:0018 Spl:01

OFFICIAL DEMOCRATIC GENERAL PRIMARY BALLOT

Huntingdon County

Commonwealth of Pennsylvania

MAY 19, 2026



INSTRUCTIONS TO VOTER:

1. To vote you must blacken the oval (●) completely. An oval (●) blackened to the left of the name of any candidate indicates a vote for that candidate.
2. To vote for a person whose name is not on the ballot, you must blacken the oval (●) to the left of the line provided, and write or print the name in the blank space provided for that purpose.
3. Use only a black pen.
4. If you make a mistake, DO NOT CORRECT. Ask for a new ballot.
5. Do not fold the ballot unless voting by absentee or mail-in ballot.
6. WARNING: If you receive an absentee or mail-in ballot and return your voted ballot by the deadline, you may not vote at your polling place on election day. If you are unable to return your voted absentee or mail-in ballot by the deadline, you may only vote a provisional ballot at your polling place on election day, unless you surrender your absentee or mail-in ballot and return envelope containing the Voter's Declaration to the judge of elections to be voided to vote by regular ballot.

**SENATOR IN THE GENERAL ASSEMBLY
30TH DISTRICT
VOTE FOR ONE**

- SEAN STEEG
HUNTINGDON COUNTY
- _____
Write-in

**REPRESENTATIVE IN THE GENERAL ASSEMBLY
81ST DISTRICT
VOTE FOR ONE**

- CALEB J DONAHUE
HUNTINGDON COUNTY
- _____
Write-in

**MEMBER OF THE DEMOCRATIC STATE COMMITTEE
31st DISTRICT
VOTE FOR ONE**

- DENNIS PLANE
HUNTINGDON COUNTY MALE
- _____
Write-in

**MEMBER OF DEMOCRATIC COUNTY COMMITTEE
VOTE FOR NO MORE THAN TWO**

- GRANT STEWART
- _____
Write-in
- _____
Write-in

**GOVERNOR
VOTE FOR ONE**

- JOSH SHAPIRO
MONTGOMERY COUNTY
- _____
Write-in

**LIEUTENANT GOVERNOR
VOTE FOR ONE**

- AUSTIN DAVIS
ALLEGHENY COUNTY
- _____
Write-in

**REPRESENTATIVE IN CONGRESS
13TH DISTRICT
VOTE FOR ONE**

- BETH FARNHAM
ADAMS COUNTY
- _____
Write-in

**HUNTINGDON COUNTY
BOARD OF ELECTIONS**

Scott Walk
Patricia Reed
Jeffrey Thomas

HUNTINGDON 2

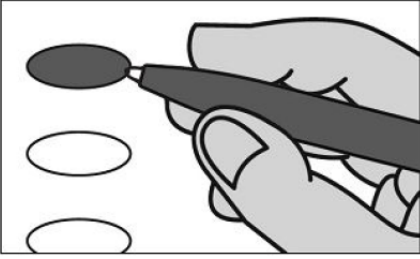
Typ:01 Seq:0019 Spl:01

OFFICIAL DEMOCRATIC GENERAL PRIMARY BALLOT

Huntingdon County

Commonwealth of Pennsylvania

MAY 19, 2026



INSTRUCTIONS TO VOTER:

1. To vote you must blacken the oval (●) completely. An oval (●) blackened to the left of the name of any candidate indicates a vote for that candidate.
2. To vote for a person whose name is not on the ballot, you must blacken the oval (●) to the left of the line provided, and write or print the name in the blank space provided for that purpose.
3. Use only a black pen.
4. If you make a mistake, DO NOT CORRECT. Ask for a new ballot.
5. Do not fold the ballot unless voting by absentee or mail-in ballot.
6. WARNING: If you receive an absentee or mail-in ballot and return your voted ballot by the deadline, you may not vote at your polling place on election day. If you are unable to return your voted absentee or mail-in ballot by the deadline, you may only vote a provisional ballot at your polling place on election day, unless you surrender your absentee or mail-in ballot and return envelope containing the Voter's Declaration to the judge of elections to be voided to vote by regular ballot.

**SENATOR IN THE GENERAL ASSEMBLY
30TH DISTRICT
VOTE FOR ONE**

- SEAN STEEG
HUNTINGDON COUNTY
- _____
Write-in

**REPRESENTATIVE IN THE GENERAL ASSEMBLY
81ST DISTRICT
VOTE FOR ONE**

- CALEB J DONAHUE
HUNTINGDON COUNTY
- _____
Write-in

**MEMBER OF THE DEMOCRATIC STATE COMMITTEE
31st DISTRICT
VOTE FOR ONE**

- DENNIS PLANE
HUNTINGDON COUNTY MALE
- _____
Write-in

**MEMBER OF DEMOCRATIC COUNTY COMMITTEE
VOTE FOR NO MORE THAN TWO**

- _____
Write-in
- _____
Write-in

**GOVERNOR
VOTE FOR ONE**

- JOSH SHAPIRO
MONTGOMERY COUNTY
- _____
Write-in

**LIEUTENANT GOVERNOR
VOTE FOR ONE**

- AUSTIN DAVIS
ALLEGHENY COUNTY
- _____
Write-in

**REPRESENTATIVE IN CONGRESS
13TH DISTRICT
VOTE FOR ONE**

- BETH FARNHAM
ADAMS COUNTY
- _____
Write-in

**HUNTINGDON COUNTY
BOARD OF ELECTIONS**

Scott Walk
Patricia Reed
Jeffrey Thomas

HUNTINGDON 3

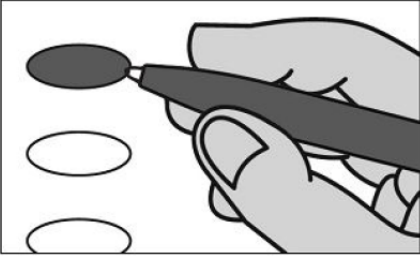
Typ:01 Seq:0020 Spl:01

OFFICIAL DEMOCRATIC GENERAL PRIMARY BALLOT

Huntingdon County

Commonwealth of Pennsylvania

MAY 19, 2026



INSTRUCTIONS TO VOTER:

1. To vote you must blacken the oval (●) completely. An oval (●) blackened to the left of the name of any candidate indicates a vote for that candidate.
2. To vote for a person whose name is not on the ballot, you must blacken the oval (●) to the left of the line provided, and write or print the name in the blank space provided for that purpose.
3. Use only a black pen.
4. If you make a mistake, DO NOT CORRECT. Ask for a new ballot.
5. Do not fold the ballot unless voting by absentee or mail-in ballot.
6. WARNING: If you receive an absentee or mail-in ballot and return your voted ballot by the deadline, you may not vote at your polling place on election day. If you are unable to return your voted absentee or mail-in ballot by the deadline, you may only vote a provisional ballot at your polling place on election day, unless you surrender your absentee or mail-in ballot and return envelope containing the Voter's Declaration to the judge of elections to be voided to vote by regular ballot.

**SENATOR IN THE GENERAL ASSEMBLY
30TH DISTRICT
VOTE FOR ONE**

- SEAN STEEG
HUNTINGDON COUNTY
- _____
Write-in

**REPRESENTATIVE IN THE GENERAL ASSEMBLY
81ST DISTRICT
VOTE FOR ONE**

- CALEB J DONAHUE
HUNTINGDON COUNTY
- _____
Write-in

**MEMBER OF THE DEMOCRATIC STATE COMMITTEE
31st DISTRICT
VOTE FOR ONE**

- DENNIS PLANE
HUNTINGDON COUNTY MALE
- _____
Write-in

**MEMBER OF DEMOCRATIC COUNTY COMMITTEE
VOTE FOR NO MORE THAN TWO**

- SEAN STEEG
- _____
Write-in
- _____
Write-in

**GOVERNOR
VOTE FOR ONE**

- JOSH SHAPIRO
MONTGOMERY COUNTY
- _____
Write-in

**LIEUTENANT GOVERNOR
VOTE FOR ONE**

- AUSTIN DAVIS
ALLEGHENY COUNTY
- _____
Write-in

**REPRESENTATIVE IN CONGRESS
13TH DISTRICT
VOTE FOR ONE**

- BETH FARNHAM
ADAMS COUNTY
- _____
Write-in

**HUNTINGDON COUNTY
BOARD OF ELECTIONS**

Scott Walk
Patricia Reeder
Jeffrey Thomas

HUNTINGDON 4

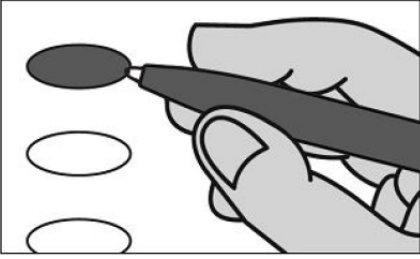
Typ:01 Seq:0021 Spl:01

OFFICIAL DEMOCRATIC GENERAL PRIMARY BALLOT

Huntingdon County

Commonwealth of Pennsylvania

MAY 19, 2026



INSTRUCTIONS TO VOTER:

1. To vote you must blacken the oval (●) completely. An oval (●) blackened to the left of the name of any candidate indicates a vote for that candidate.
2. To vote for a person whose name is not on the ballot, you must blacken the oval (●) to the left of the line provided, and write or print the name in the blank space provided for that purpose.
3. Use only a black pen.
4. If you make a mistake, DO NOT CORRECT. Ask for a new ballot.
5. Do not fold the ballot unless voting by absentee or mail-in ballot.
6. WARNING: If you receive an absentee or mail-in ballot and return your voted ballot by the deadline, you may not vote at your polling place on election day. If you are unable to return your voted absentee or mail-in ballot by the deadline, you may only vote a provisional ballot at your polling place on election day, unless you surrender your absentee or mail-in ballot and return envelope containing the Voter's Declaration to the judge of elections to be voided to vote by regular ballot.

**SENATOR IN THE GENERAL ASSEMBLY
30TH DISTRICT
VOTE FOR ONE**

- SEAN STEEG
HUNTINGDON COUNTY
- _____
Write-in

**REPRESENTATIVE IN THE GENERAL ASSEMBLY
81ST DISTRICT
VOTE FOR ONE**

- CALEB J DONAHUE
HUNTINGDON COUNTY
- _____
Write-in

**MEMBER OF THE DEMOCRATIC STATE COMMITTEE
31st DISTRICT
VOTE FOR ONE**

- DENNIS PLANE
HUNTINGDON COUNTY MALE
- _____
Write-in

**MEMBER OF DEMOCRATIC COUNTY COMMITTEE
VOTE FOR NO MORE THAN TWO**

- _____
Write-in
- _____
Write-in

**GOVERNOR
VOTE FOR ONE**

- JOSH SHAPIRO
MONTGOMERY COUNTY
- _____
Write-in

**LIEUTENANT GOVERNOR
VOTE FOR ONE**

- AUSTIN DAVIS
ALLEGHENY COUNTY
- _____
Write-in

**REPRESENTATIVE IN CONGRESS
13TH DISTRICT
VOTE FOR ONE**

- BETH FARNHAM
ADAMS COUNTY
- _____
Write-in

**HUNTINGDON COUNTY
BOARD OF ELECTIONS**

Scott Walk
Patricia Reed
Jeffrey Thomas

HUNTINGDON 5

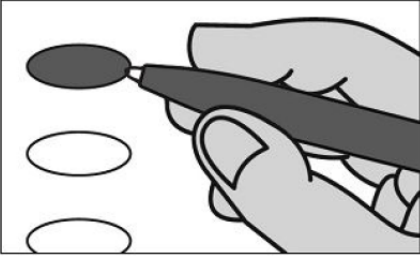
Typ:01 Seq:0022 Spl:01

OFFICIAL DEMOCRATIC GENERAL PRIMARY BALLOT

Huntingdon County

Commonwealth of Pennsylvania

MAY 19, 2026



INSTRUCTIONS TO VOTER:

1. To vote you must blacken the oval (●) completely. An oval (●) blackened to the left of the name of any candidate indicates a vote for that candidate.
2. To vote for a person whose name is not on the ballot, you must blacken the oval (●) to the left of the line provided, and write or print the name in the blank space provided for that purpose.
3. Use only a black pen.
4. If you make a mistake, DO NOT CORRECT. Ask for a new ballot.
5. Do not fold the ballot unless voting by absentee or mail-in ballot.
6. WARNING: If you receive an absentee or mail-in ballot and return your voted ballot by the deadline, you may not vote at your polling place on election day. If you are unable to return your voted absentee or mail-in ballot by the deadline, you may only vote a provisional ballot at your polling place on election day, unless you surrender your absentee or mail-in ballot and return envelope containing the Voter's Declaration to the judge of elections to be voided to vote by regular ballot.

SENATOR IN THE GENERAL ASSEMBLY 30TH DISTRICT VOTE FOR ONE

- SEAN STEEG
HUNTINGDON COUNTY
- _____
Write-in

REPRESENTATIVE IN THE GENERAL ASSEMBLY 81ST DISTRICT VOTE FOR ONE

- CALEB J DONAHUE
HUNTINGDON COUNTY
- _____
Write-in

MEMBER OF THE DEMOCRATIC STATE COMMITTEE 31st DISTRICT VOTE FOR ONE

- DENNIS PLANE
HUNTINGDON COUNTY MALE
- _____
Write-in

MEMBER OF DEMOCRATIC COUNTY COMMITTEE VOTE FOR NO MORE THAN TWO

- JANIS L JONES
- GRADETTE HATALA
- _____
Write-in
- _____
Write-in

GOVERNOR VOTE FOR ONE

- JOSH SHAPIRO
MONTGOMERY COUNTY
- _____
Write-in

LIEUTENANT GOVERNOR VOTE FOR ONE

- AUSTIN DAVIS
ALLEGHENY COUNTY
- _____
Write-in

REPRESENTATIVE IN CONGRESS 13TH DISTRICT VOTE FOR ONE

- BETH FARNHAM
ADAMS COUNTY
- _____
Write-in

HUNTINGDON COUNTY BOARD OF ELECTIONS

Scott Walk
Patricia Reed
Jeffrey Thomas

HUNTINGDON 6

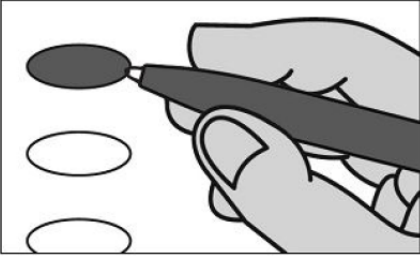
Typ:01 Seq:0023 Spl:01

OFFICIAL DEMOCRATIC GENERAL PRIMARY BALLOT

Huntingdon County

Commonwealth of Pennsylvania

MAY 19, 2026



INSTRUCTIONS TO VOTER:

1. To vote you must blacken the oval (●) completely. An oval (●) blackened to the left of the name of any candidate indicates a vote for that candidate.
2. To vote for a person whose name is not on the ballot, you must blacken the oval (●) to the left of the line provided, and write or print the name in the blank space provided for that purpose.
3. Use only a black pen.
4. If you make a mistake, DO NOT CORRECT. Ask for a new ballot.
5. Do not fold the ballot unless voting by absentee or mail-in ballot.
6. WARNING: If you receive an absentee or mail-in ballot and return your voted ballot by the deadline, you may not vote at your polling place on election day. If you are unable to return your voted absentee or mail-in ballot by the deadline, you may only vote a provisional ballot at your polling place on election day, unless you surrender your absentee or mail-in ballot and return envelope containing the Voter's Declaration to the judge of elections to be voided to vote by regular ballot.

**SENATOR IN THE GENERAL ASSEMBLY
30TH DISTRICT
VOTE FOR ONE**

- SEAN STEEG
HUNTINGDON COUNTY
- _____
Write-in

**REPRESENTATIVE IN THE GENERAL ASSEMBLY
81ST DISTRICT
VOTE FOR ONE**

- CALEB J DONAHUE
HUNTINGDON COUNTY
- _____
Write-in

**MEMBER OF THE DEMOCRATIC STATE COMMITTEE
31st DISTRICT
VOTE FOR ONE**

- DENNIS PLANE
HUNTINGDON COUNTY MALE
- _____
Write-in

**MEMBER OF DEMOCRATIC COUNTY COMMITTEE
VOTE FOR NO MORE THAN TWO**

- _____
Write-in
- _____
Write-in

**GOVERNOR
VOTE FOR ONE**

- JOSH SHAPIRO
MONTGOMERY COUNTY
- _____
Write-in

**LIEUTENANT GOVERNOR
VOTE FOR ONE**

- AUSTIN DAVIS
ALLEGHENY COUNTY
- _____
Write-in

**REPRESENTATIVE IN CONGRESS
13TH DISTRICT
VOTE FOR ONE**

- BETH FARNHAM
ADAMS COUNTY
- _____
Write-in

**HUNTINGDON COUNTY
BOARD OF ELECTIONS**

Scott Walk
Patricia Reed
Jeffrey Thomas

JACKSON

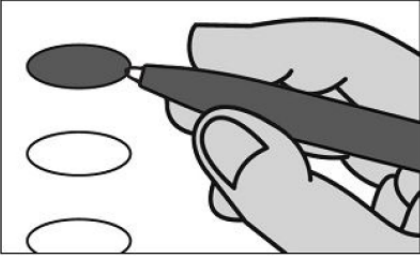
Typ:01 Seq:0024 Spl:01

OFFICIAL DEMOCRATIC GENERAL PRIMARY BALLOT

Huntingdon County

Commonwealth of Pennsylvania

MAY 19, 2026



INSTRUCTIONS TO VOTER:

1. To vote you must blacken the oval (●) completely. An oval (●) blackened to the left of the name of any candidate indicates a vote for that candidate.
2. To vote for a person whose name is not on the ballot, you must blacken the oval (●) to the left of the line provided, and write or print the name in the blank space provided for that purpose.
3. Use only a black pen.
4. If you make a mistake, DO NOT CORRECT. Ask for a new ballot.
5. Do not fold the ballot unless voting by absentee or mail-in ballot.
6. WARNING: If you receive an absentee or mail-in ballot and return your voted ballot by the deadline, you may not vote at your polling place on election day. If you are unable to return your voted absentee or mail-in ballot by the deadline, you may only vote a provisional ballot at your polling place on election day, unless you surrender your absentee or mail-in ballot and return envelope containing the Voter's Declaration to the judge of elections to be voided to vote by regular ballot.

**SENATOR IN THE GENERAL ASSEMBLY
30TH DISTRICT
VOTE FOR ONE**

- SEAN STEEG
HUNTINGDON COUNTY
- _____
Write-in

**REPRESENTATIVE IN THE GENERAL ASSEMBLY
81ST DISTRICT
VOTE FOR ONE**

- CALEB J DONAHUE
HUNTINGDON COUNTY
- _____
Write-in

**MEMBER OF THE DEMOCRATIC STATE COMMITTEE
31st DISTRICT
VOTE FOR ONE**

- DENNIS PLANE
HUNTINGDON COUNTY MALE
- _____
Write-in

**MEMBER OF DEMOCRATIC COUNTY COMMITTEE
VOTE FOR NO MORE THAN TWO**

- _____
Write-in
- _____
Write-in

**GOVERNOR
VOTE FOR ONE**

- JOSH SHAPIRO
MONTGOMERY COUNTY
- _____
Write-in

**LIEUTENANT GOVERNOR
VOTE FOR ONE**

- AUSTIN DAVIS
ALLEGHENY COUNTY
- _____
Write-in

**REPRESENTATIVE IN CONGRESS
13TH DISTRICT
VOTE FOR ONE**

- BETH FARNHAM
ADAMS COUNTY
- _____
Write-in

**HUNTINGDON COUNTY
BOARD OF ELECTIONS**

Scott Walk
Patricia Reeder
Jeffrey Thomas

JUNIATA

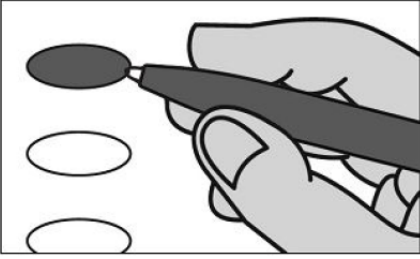
Typ:01 Seq:0025 Spl:01

OFFICIAL DEMOCRATIC GENERAL PRIMARY BALLOT

Huntingdon County

Commonwealth of Pennsylvania

MAY 19, 2026



INSTRUCTIONS TO VOTER:

1. To vote you must blacken the oval (●) completely. An oval (●) blackened to the left of the name of any candidate indicates a vote for that candidate.
2. To vote for a person whose name is not on the ballot, you must blacken the oval (●) to the left of the line provided, and write or print the name in the blank space provided for that purpose.
3. Use only a black pen.
4. If you make a mistake, DO NOT CORRECT. Ask for a new ballot.
5. Do not fold the ballot unless voting by absentee or mail-in ballot.
6. WARNING: If you receive an absentee or mail-in ballot and return your voted ballot by the deadline, you may not vote at your polling place on election day. If you are unable to return your voted absentee or mail-in ballot by the deadline, you may only vote a provisional ballot at your polling place on election day, unless you surrender your absentee or mail-in ballot and return envelope containing the Voter's Declaration to the judge of elections to be voided to vote by regular ballot.

**SENATOR IN THE GENERAL ASSEMBLY
30TH DISTRICT
VOTE FOR ONE**

- SEAN STEEG
HUNTINGDON COUNTY
- _____
Write-in

**REPRESENTATIVE IN THE GENERAL ASSEMBLY
81ST DISTRICT
VOTE FOR ONE**

- CALEB J DONAHUE
HUNTINGDON COUNTY
- _____
Write-in

**MEMBER OF THE DEMOCRATIC STATE COMMITTEE
31st DISTRICT
VOTE FOR ONE**

- DENNIS PLANE
HUNTINGDON COUNTY MALE
- _____
Write-in

**MEMBER OF DEMOCRATIC COUNTY COMMITTEE
VOTE FOR NO MORE THAN TWO**

- _____
Write-in
- _____
Write-in

**GOVERNOR
VOTE FOR ONE**

- JOSH SHAPIRO
MONTGOMERY COUNTY
- _____
Write-in

**LIEUTENANT GOVERNOR
VOTE FOR ONE**

- AUSTIN DAVIS
ALLEGHENY COUNTY
- _____
Write-in

**REPRESENTATIVE IN CONGRESS
13TH DISTRICT
VOTE FOR ONE**

- BETH FARNHAM
ADAMS COUNTY
- _____
Write-in

**HUNTINGDON COUNTY
BOARD OF ELECTIONS**

Scott Walk
Patricia Reed
Jeffrey Thomas

LINCOLN

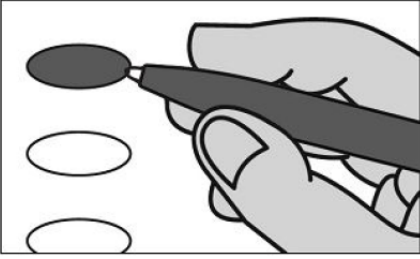
Typ:01 Seq:0026 Spl:01

OFFICIAL DEMOCRATIC GENERAL PRIMARY BALLOT

Huntingdon County

Commonwealth of Pennsylvania

MAY 19, 2026



INSTRUCTIONS TO VOTER:

1. To vote you must blacken the oval (●) completely. An oval (●) blackened to the left of the name of any candidate indicates a vote for that candidate.
2. To vote for a person whose name is not on the ballot, you must blacken the oval (●) to the left of the line provided, and write or print the name in the blank space provided for that purpose.
3. Use only a black pen.
4. If you make a mistake, DO NOT CORRECT. Ask for a new ballot.
5. Do not fold the ballot unless voting by absentee or mail-in ballot.
6. WARNING: If you receive an absentee or mail-in ballot and return your voted ballot by the deadline, you may not vote at your polling place on election day. If you are unable to return your voted absentee or mail-in ballot by the deadline, you may only vote a provisional ballot at your polling place on election day, unless you surrender your absentee or mail-in ballot and return envelope containing the Voter's Declaration to the judge of elections to be voided to vote by regular ballot.

**SENATOR IN THE GENERAL ASSEMBLY
30TH DISTRICT
VOTE FOR ONE**

- SEAN STEEG
HUNTINGDON COUNTY
- _____
Write-in

**REPRESENTATIVE IN THE GENERAL ASSEMBLY
81ST DISTRICT
VOTE FOR ONE**

- CALEB J DONAHUE
HUNTINGDON COUNTY
- _____
Write-in

**MEMBER OF THE DEMOCRATIC STATE COMMITTEE
31st DISTRICT
VOTE FOR ONE**

- DENNIS PLANE
HUNTINGDON COUNTY MALE
- _____
Write-in

**MEMBER OF DEMOCRATIC COUNTY COMMITTEE
VOTE FOR NO MORE THAN TWO**

- _____
Write-in
- _____
Write-in

**GOVERNOR
VOTE FOR ONE**

- JOSH SHAPIRO
MONTGOMERY COUNTY
- _____
Write-in

**LIEUTENANT GOVERNOR
VOTE FOR ONE**

- AUSTIN DAVIS
ALLEGHENY COUNTY
- _____
Write-in

**REPRESENTATIVE IN CONGRESS
13TH DISTRICT
VOTE FOR ONE**

- BETH FARNHAM
ADAMS COUNTY
- _____
Write-in

**HUNTINGDON COUNTY
BOARD OF ELECTIONS**

Scott Walk
Patricia Reeder
Jeffrey Thomas

LOGAN

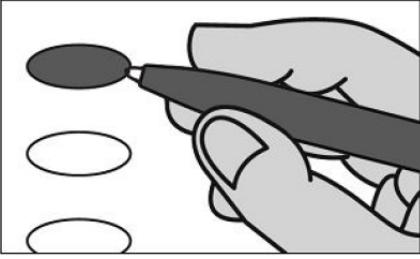
Typ:01 Seq:0027 Spl:01

OFFICIAL DEMOCRATIC GENERAL PRIMARY BALLOT

Huntingdon County

Commonwealth of Pennsylvania

MAY 19, 2026



INSTRUCTIONS TO VOTER:

1. To vote you must blacken the oval (●) completely. An oval (●) blackened to the left of the name of any candidate indicates a vote for that candidate.
2. To vote for a person whose name is not on the ballot, you must blacken the oval (●) to the left of the line provided, and write or print the name in the blank space provided for that purpose.
3. Use only a black pen.
4. If you make a mistake, DO NOT CORRECT. Ask for a new ballot.
5. Do not fold the ballot unless voting by absentee or mail-in ballot.
6. WARNING: If you receive an absentee or mail-in ballot and return your voted ballot by the deadline, you may not vote at your polling place on election day. If you are unable to return your voted absentee or mail-in ballot by the deadline, you may only vote a provisional ballot at your polling place on election day, unless you surrender your absentee or mail-in ballot and return envelope containing the Voter's Declaration to the judge of elections to be voided to vote by regular ballot.

**SENATOR IN THE GENERAL ASSEMBLY
30TH DISTRICT
VOTE FOR ONE**

- SEAN STEEG
HUNTINGDON COUNTY
- _____
Write-in

**REPRESENTATIVE IN THE GENERAL ASSEMBLY
81ST DISTRICT
VOTE FOR ONE**

- CALEB J DONAHUE
HUNTINGDON COUNTY
- _____
Write-in

**MEMBER OF THE DEMOCRATIC STATE COMMITTEE
31st DISTRICT
VOTE FOR ONE**

- DENNIS PLANE
HUNTINGDON COUNTY MALE
- _____
Write-in

**MEMBER OF DEMOCRATIC COUNTY COMMITTEE
VOTE FOR NO MORE THAN TWO**

- _____
Write-in
- _____
Write-in

**GOVERNOR
VOTE FOR ONE**

- JOSH SHAPIRO
MONTGOMERY COUNTY
- _____
Write-in

**LIEUTENANT GOVERNOR
VOTE FOR ONE**

- AUSTIN DAVIS
ALLEGHENY COUNTY
- _____
Write-in

**REPRESENTATIVE IN CONGRESS
13TH DISTRICT
VOTE FOR ONE**

- BETH FARNHAM
ADAMS COUNTY
- _____
Write-in

**HUNTINGDON COUNTY
BOARD OF ELECTIONS**

Scott Walk
Patricia Reed
Jeffrey Thomas

MAPLETON

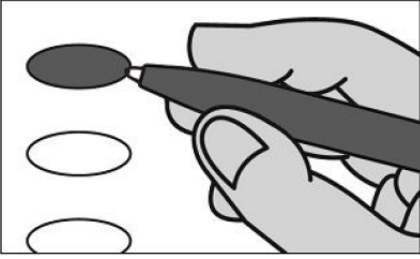
Typ:01 Seq:0028 Spl:01

OFFICIAL DEMOCRATIC GENERAL PRIMARY BALLOT

Huntingdon County

Commonwealth of Pennsylvania

MAY 19, 2026



INSTRUCTIONS TO VOTER:

1. To vote you must blacken the oval (●) completely. An oval (●) blackened to the left of the name of any candidate indicates a vote for that candidate.
2. To vote for a person whose name is not on the ballot, you must blacken the oval (●) to the left of the line provided, and write or print the name in the blank space provided for that purpose.
3. Use only a black pen.
4. If you make a mistake, DO NOT CORRECT. Ask for a new ballot.
5. Do not fold the ballot unless voting by absentee or mail-in ballot.
6. WARNING: If you receive an absentee or mail-in ballot and return your voted ballot by the deadline, you may not vote at your polling place on election day. If you are unable to return your voted absentee or mail-in ballot by the deadline, you may only vote a provisional ballot at your polling place on election day, unless you surrender your absentee or mail-in ballot and return envelope containing the Voter's Declaration to the judge of elections to be voided to vote by regular ballot.

**SENATOR IN THE GENERAL ASSEMBLY
30TH DISTRICT
VOTE FOR ONE**

- SEAN STEEG
HUNTINGDON COUNTY
- _____
Write-in

**REPRESENTATIVE IN THE GENERAL ASSEMBLY
81ST DISTRICT
VOTE FOR ONE**

- CALEB J DONAHUE
HUNTINGDON COUNTY
- _____
Write-in

**MEMBER OF THE DEMOCRATIC STATE COMMITTEE
31st DISTRICT
VOTE FOR ONE**

- DENNIS PLANE
HUNTINGDON COUNTY MALE
- _____
Write-in

**MEMBER OF DEMOCRATIC COUNTY COMMITTEE
VOTE FOR NO MORE THAN TWO**

- _____
Write-in
- _____
Write-in

**GOVERNOR
VOTE FOR ONE**

- JOSH SHAPIRO
MONTGOMERY COUNTY
- _____
Write-in

**LIEUTENANT GOVERNOR
VOTE FOR ONE**

- AUSTIN DAVIS
ALLEGHENY COUNTY
- _____
Write-in

**REPRESENTATIVE IN CONGRESS
13TH DISTRICT
VOTE FOR ONE**

- BETH FARNHAM
ADAMS COUNTY
- _____
Write-in

**HUNTINGDON COUNTY
BOARD OF ELECTIONS**

Scott Walk
Patricia Reed
Jeffrey Thomas

MARKLESBURG

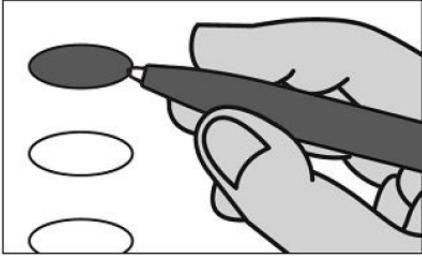
Typ:01 Seq:0029 Spl:01

OFFICIAL DEMOCRATIC GENERAL PRIMARY BALLOT

Huntingdon County

Commonwealth of Pennsylvania

MAY 19, 2026



INSTRUCTIONS TO VOTER:

1. To vote you must blacken the oval (●) completely. An oval (●) blackened to the left of the name of any candidate indicates a vote for that candidate.
2. To vote for a person whose name is not on the ballot, you must blacken the oval (●) to the left of the line provided, and write or print the name in the blank space provided for that purpose.
3. Use only a black pen.
4. If you make a mistake, DO NOT CORRECT. Ask for a new ballot.
5. Do not fold the ballot unless voting by absentee or mail-in ballot.
6. WARNING: If you receive an absentee or mail-in ballot and return your voted ballot by the deadline, you may not vote at your polling place on election day. If you are unable to return your voted absentee or mail-in ballot by the deadline, you may only vote a provisional ballot at your polling place on election day, unless you surrender your absentee or mail-in ballot and return envelope containing the Voter's Declaration to the judge of elections to be voided to vote by regular ballot.

**SENATOR IN THE GENERAL ASSEMBLY
30TH DISTRICT
VOTE FOR ONE**

- SEAN STEEG
HUNTINGDON COUNTY
- _____
Write-in

**REPRESENTATIVE IN THE GENERAL ASSEMBLY
81ST DISTRICT
VOTE FOR ONE**

- CALEB J DONAHUE
HUNTINGDON COUNTY
- _____
Write-in

**MEMBER OF THE DEMOCRATIC STATE COMMITTEE
31st DISTRICT
VOTE FOR ONE**

- DENNIS PLANE
HUNTINGDON COUNTY MALE
- _____
Write-in

**MEMBER OF DEMOCRATIC COUNTY COMMITTEE
VOTE FOR NO MORE THAN TWO**

- _____
Write-in
- _____
Write-in

**GOVERNOR
VOTE FOR ONE**

- JOSH SHAPIRO
MONTGOMERY COUNTY
- _____
Write-in

**LIEUTENANT GOVERNOR
VOTE FOR ONE**

- AUSTIN DAVIS
ALLEGHENY COUNTY
- _____
Write-in

**REPRESENTATIVE IN CONGRESS
13TH DISTRICT
VOTE FOR ONE**

- BETH FARNHAM
ADAMS COUNTY
- _____
Write-in

**HUNTINGDON COUNTY
BOARD OF ELECTIONS**

Scott Walk
Patricia Reed
Jeffrey Thomas

MILL CREEK

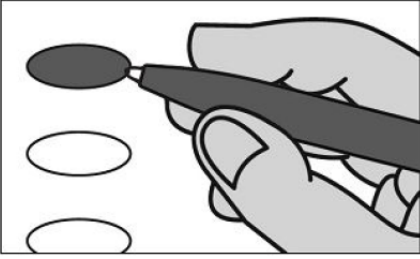
Typ:01 Seq:0030 Spl:01

OFFICIAL DEMOCRATIC GENERAL PRIMARY BALLOT

Huntingdon County

Commonwealth of Pennsylvania

MAY 19, 2026



INSTRUCTIONS TO VOTER:

1. To vote you must blacken the oval (●) completely. An oval (●) blackened to the left of the name of any candidate indicates a vote for that candidate.
2. To vote for a person whose name is not on the ballot, you must blacken the oval (●) to the left of the line provided, and write or print the name in the blank space provided for that purpose.
3. Use only a black pen.
4. If you make a mistake, DO NOT CORRECT. Ask for a new ballot.
5. Do not fold the ballot unless voting by absentee or mail-in ballot.
6. WARNING: If you receive an absentee or mail-in ballot and return your voted ballot by the deadline, you may not vote at your polling place on election day. If you are unable to return your voted absentee or mail-in ballot by the deadline, you may only vote a provisional ballot at your polling place on election day, unless you surrender your absentee or mail-in ballot and return envelope containing the Voter's Declaration to the judge of elections to be voided to vote by regular ballot.

**SENATOR IN THE GENERAL ASSEMBLY
30TH DISTRICT
VOTE FOR ONE**

- SEAN STEEG
HUNTINGDON COUNTY
- _____
Write-in

**REPRESENTATIVE IN THE GENERAL ASSEMBLY
81ST DISTRICT
VOTE FOR ONE**

- CALEB J DONAHUE
HUNTINGDON COUNTY
- _____
Write-in

**MEMBER OF THE DEMOCRATIC STATE COMMITTEE
31st DISTRICT
VOTE FOR ONE**

- DENNIS PLANE
HUNTINGDON COUNTY MALE
- _____
Write-in

**MEMBER OF DEMOCRATIC COUNTY COMMITTEE
VOTE FOR NO MORE THAN TWO**

- _____
Write-in
- _____
Write-in

**GOVERNOR
VOTE FOR ONE**

- JOSH SHAPIRO
MONTGOMERY COUNTY
- _____
Write-in

**LIEUTENANT GOVERNOR
VOTE FOR ONE**

- AUSTIN DAVIS
ALLEGHENY COUNTY
- _____
Write-in

**REPRESENTATIVE IN CONGRESS
13TH DISTRICT
VOTE FOR ONE**

- BETH FARNHAM
ADAMS COUNTY
- _____
Write-in

**HUNTINGDON COUNTY
BOARD OF ELECTIONS**

Scott Walk
Patricia Reeder
Jeffrey Thomas

MILLER

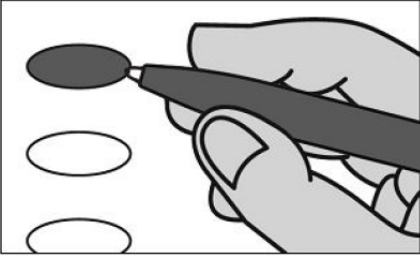
Typ:01 Seq:0031 Spl:01

OFFICIAL DEMOCRATIC GENERAL PRIMARY BALLOT

Huntingdon County

Commonwealth of Pennsylvania

MAY 19, 2026



INSTRUCTIONS TO VOTER:

1. To vote you must blacken the oval (●) completely. An oval (●) blackened to the left of the name of any candidate indicates a vote for that candidate.
2. To vote for a person whose name is not on the ballot, you must blacken the oval (●) to the left of the line provided, and write or print the name in the blank space provided for that purpose.
3. Use only a black pen.
4. If you make a mistake, DO NOT CORRECT. Ask for a new ballot.
5. Do not fold the ballot unless voting by absentee or mail-in ballot.
6. WARNING: If you receive an absentee or mail-in ballot and return your voted ballot by the deadline, you may not vote at your polling place on election day. If you are unable to return your voted absentee or mail-in ballot by the deadline, you may only vote a provisional ballot at your polling place on election day, unless you surrender your absentee or mail-in ballot and return envelope containing the Voter's Declaration to the judge of elections to be voided to vote by regular ballot.

**SENATOR IN THE GENERAL ASSEMBLY
30TH DISTRICT
VOTE FOR ONE**

- SEAN STEEG
HUNTINGDON COUNTY
- _____
Write-in

**REPRESENTATIVE IN THE GENERAL ASSEMBLY
81ST DISTRICT
VOTE FOR ONE**

- CALEB J DONAHUE
HUNTINGDON COUNTY
- _____
Write-in

**MEMBER OF THE DEMOCRATIC STATE COMMITTEE
31st DISTRICT
VOTE FOR ONE**

- DENNIS PLANE
HUNTINGDON COUNTY MALE
- _____
Write-in

**MEMBER OF DEMOCRATIC COUNTY COMMITTEE
VOTE FOR NO MORE THAN TWO**

- _____
Write-in
- _____
Write-in

**GOVERNOR
VOTE FOR ONE**

- JOSH SHAPIRO
MONTGOMERY COUNTY
- _____
Write-in

**LIEUTENANT GOVERNOR
VOTE FOR ONE**

- AUSTIN DAVIS
ALLEGHENY COUNTY
- _____
Write-in

**REPRESENTATIVE IN CONGRESS
13TH DISTRICT
VOTE FOR ONE**

- BETH FARNHAM
ADAMS COUNTY
- _____
Write-in

**HUNTINGDON COUNTY
BOARD OF ELECTIONS**

Scott Walk
Patricia Reed
Jeffrey Thomas

MORRIS

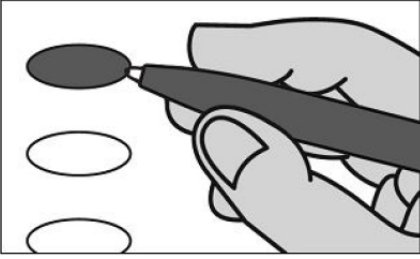
Typ:01 Seq:0032 Spl:01

OFFICIAL DEMOCRATIC GENERAL PRIMARY BALLOT

Huntingdon County

Commonwealth of Pennsylvania

MAY 19, 2026



INSTRUCTIONS TO VOTER:

1. To vote you must blacken the oval (●) completely. An oval (●) blackened to the left of the name of any candidate indicates a vote for that candidate.
2. To vote for a person whose name is not on the ballot, you must blacken the oval (●) to the left of the line provided, and write or print the name in the blank space provided for that purpose.
3. Use only a black pen.
4. If you make a mistake, DO NOT CORRECT. Ask for a new ballot.
5. Do not fold the ballot unless voting by absentee or mail-in ballot.
6. WARNING: If you receive an absentee or mail-in ballot and return your voted ballot by the deadline, you may not vote at your polling place on election day. If you are unable to return your voted absentee or mail-in ballot by the deadline, you may only vote a provisional ballot at your polling place on election day, unless you surrender your absentee or mail-in ballot and return envelope containing the Voter's Declaration to the judge of elections to be voided to vote by regular ballot.

SENATOR IN THE GENERAL ASSEMBLY 30TH DISTRICT VOTE FOR ONE

- SEAN STEEG
HUNTINGDON COUNTY
- _____
Write-in

REPRESENTATIVE IN THE GENERAL ASSEMBLY 81ST DISTRICT VOTE FOR ONE

- CALEB J DONAHUE
HUNTINGDON COUNTY
- _____
Write-in

MEMBER OF THE DEMOCRATIC STATE COMMITTEE 31st DISTRICT VOTE FOR ONE

- DENNIS PLANE
HUNTINGDON COUNTY MALE
- _____
Write-in

MEMBER OF DEMOCRATIC COUNTY COMMITTEE VOTE FOR NO MORE THAN TWO

- _____
Write-in
- _____
Write-in

GOVERNOR VOTE FOR ONE

- JOSH SHAPIRO
MONTGOMERY COUNTY
- _____
Write-in

LIEUTENANT GOVERNOR VOTE FOR ONE

- AUSTIN DAVIS
ALLEGHENY COUNTY
- _____
Write-in

REPRESENTATIVE IN CONGRESS 13TH DISTRICT VOTE FOR ONE

- BETH FARNHAM
ADAMS COUNTY
- _____
Write-in

HUNTINGDON COUNTY BOARD OF ELECTIONS

Scott Walk
Patricia Reed
Jeffrey Thomas

MOUNT UNION 1

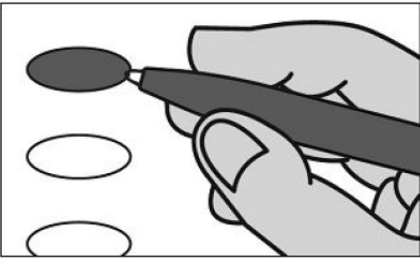
Typ:01 Seq:0033 Spl:01

OFFICIAL DEMOCRATIC GENERAL PRIMARY BALLOT

Huntingdon County

Commonwealth of Pennsylvania

MAY 19, 2026



INSTRUCTIONS TO VOTER:

1. To vote you must blacken the oval (●) completely. An oval (●) blackened to the left of the name of any candidate indicates a vote for that candidate.
2. To vote for a person whose name is not on the ballot, you must blacken the oval (●) to the left of the line provided, and write or print the name in the blank space provided for that purpose.
3. Use only a black pen.
4. If you make a mistake, DO NOT CORRECT. Ask for a new ballot.
5. Do not fold the ballot unless voting by absentee or mail-in ballot.
6. WARNING: If you receive an absentee or mail-in ballot and return your voted ballot by the deadline, you may not vote at your polling place on election day. If you are unable to return your voted absentee or mail-in ballot by the deadline, you may only vote a provisional ballot at your polling place on election day, unless you surrender your absentee or mail-in ballot and return envelope containing the Voter's Declaration to the judge of elections to be voided to vote by regular ballot.

SENATOR IN THE GENERAL ASSEMBLY 30TH DISTRICT VOTE FOR ONE

- SEAN STEEG
HUNTINGDON COUNTY
- _____
Write-in

REPRESENTATIVE IN THE GENERAL ASSEMBLY 81ST DISTRICT VOTE FOR ONE

- CALEB J DONAHUE
HUNTINGDON COUNTY
- _____
Write-in

MEMBER OF THE DEMOCRATIC STATE COMMITTEE 31st DISTRICT VOTE FOR ONE

- DENNIS PLANE
HUNTINGDON COUNTY MALE
- _____
Write-in

MEMBER OF DEMOCRATIC COUNTY COMMITTEE VOTE FOR NO MORE THAN TWO

- _____
Write-in
- _____
Write-in

GOVERNOR VOTE FOR ONE

- JOSH SHAPIRO
MONTGOMERY COUNTY
- _____
Write-in

LIEUTENANT GOVERNOR VOTE FOR ONE

- AUSTIN DAVIS
ALLEGHENY COUNTY
- _____
Write-in

REPRESENTATIVE IN CONGRESS 13TH DISTRICT VOTE FOR ONE

- BETH FARNHAM
ADAMS COUNTY
- _____
Write-in

MOUNT UNION 2

Typ:01 Seq:0034 Spl:01

HUNTINGDON COUNTY BOARD OF ELECTIONS

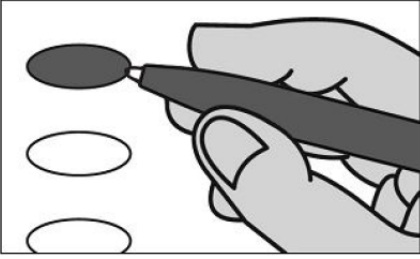
Scott Walk
Patricia Reeder
Jeffrey Thomas

OFFICIAL DEMOCRATIC GENERAL PRIMARY BALLOT

Huntingdon County

Commonwealth of Pennsylvania

MAY 19, 2026



INSTRUCTIONS TO VOTER:

1. To vote you must blacken the oval (●) completely. An oval (●) blackened to the left of the name of any candidate indicates a vote for that candidate.
2. To vote for a person whose name is not on the ballot, you must blacken the oval (●) to the left of the line provided, and write or print the name in the blank space provided for that purpose.
3. Use only a black pen.
4. If you make a mistake, DO NOT CORRECT. Ask for a new ballot.
5. Do not fold the ballot unless voting by absentee or mail-in ballot.
6. WARNING: If you receive an absentee or mail-in ballot and return your voted ballot by the deadline, you may not vote at your polling place on election day. If you are unable to return your voted absentee or mail-in ballot by the deadline, you may only vote a provisional ballot at your polling place on election day, unless you surrender your absentee or mail-in ballot and return envelope containing the Voter's Declaration to the judge of elections to be voided to vote by regular ballot.

**SENATOR IN THE GENERAL ASSEMBLY
30TH DISTRICT
VOTE FOR ONE**

- SEAN STEEG
HUNTINGDON COUNTY
- _____
Write-in

**REPRESENTATIVE IN THE GENERAL ASSEMBLY
81ST DISTRICT
VOTE FOR ONE**

- CALEB J DONAHUE
HUNTINGDON COUNTY
- _____
Write-in

**MEMBER OF THE DEMOCRATIC STATE COMMITTEE
31st DISTRICT
VOTE FOR ONE**

- DENNIS PLANE
HUNTINGDON COUNTY MALE
- _____
Write-in

**MEMBER OF DEMOCRATIC COUNTY COMMITTEE
VOTE FOR NO MORE THAN TWO**

- _____
Write-in
- _____
Write-in

**GOVERNOR
VOTE FOR ONE**

- JOSH SHAPIRO
MONTGOMERY COUNTY
- _____
Write-in

**LIEUTENANT GOVERNOR
VOTE FOR ONE**

- AUSTIN DAVIS
ALLEGHENY COUNTY
- _____
Write-in

**REPRESENTATIVE IN CONGRESS
13TH DISTRICT
VOTE FOR ONE**

- BETH FARNHAM
ADAMS COUNTY
- _____
Write-in

**HUNTINGDON COUNTY
BOARD OF ELECTIONS**

Scott Walk
Patricia Reed
Jeffrey Thomas

MOUNT UNION 3

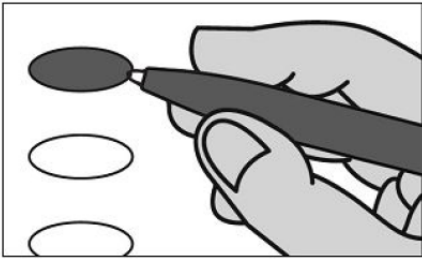
Typ:01 Seq:0035 Spl:01

OFFICIAL DEMOCRATIC GENERAL PRIMARY BALLOT

Huntingdon County

Commonwealth of Pennsylvania

MAY 19, 2026



INSTRUCTIONS TO VOTER:

1. To vote you must blacken the oval (●) completely. An oval (●) blackened to the left of the name of any candidate indicates a vote for that candidate.
2. To vote for a person whose name is not on the ballot, you must blacken the oval (●) to the left of the line provided, and write or print the name in the blank space provided for that purpose.
3. Use only a black pen.
4. If you make a mistake, DO NOT CORRECT. Ask for a new ballot.
5. Do not fold the ballot unless voting by absentee or mail-in ballot.
6. WARNING: If you receive an absentee or mail-in ballot and return your voted ballot by the deadline, you may not vote at your polling place on election day. If you are unable to return your voted absentee or mail-in ballot by the deadline, you may only vote a provisional ballot at your polling place on election day, unless you surrender your absentee or mail-in ballot and return envelope containing the Voter's Declaration to the judge of elections to be voided to vote by regular ballot.

**SENATOR IN THE GENERAL ASSEMBLY
30TH DISTRICT
VOTE FOR ONE**

- SEAN STEEG
HUNTINGDON COUNTY
- _____
Write-in

**REPRESENTATIVE IN THE GENERAL ASSEMBLY
81ST DISTRICT
VOTE FOR ONE**

- CALEB J DONAHUE
HUNTINGDON COUNTY
- _____
Write-in

**MEMBER OF THE DEMOCRATIC STATE COMMITTEE
31st DISTRICT
VOTE FOR ONE**

- DENNIS PLANE
HUNTINGDON COUNTY MALE
- _____
Write-in

**MEMBER OF DEMOCRATIC COUNTY COMMITTEE
VOTE FOR NO MORE THAN TWO**

- _____
Write-in
- _____
Write-in

**GOVERNOR
VOTE FOR ONE**

- JOSH SHAPIRO
MONTGOMERY COUNTY
- _____
Write-in

**LIEUTENANT GOVERNOR
VOTE FOR ONE**

- AUSTIN DAVIS
ALLEGHENY COUNTY
- _____
Write-in

**REPRESENTATIVE IN CONGRESS
13TH DISTRICT
VOTE FOR ONE**

- BETH FARNHAM
ADAMS COUNTY
- _____
Write-in

**HUNTINGDON COUNTY
BOARD OF ELECTIONS**

Scott Walk
Patricia Reed
Jeffrey Thomas

ONEIDA

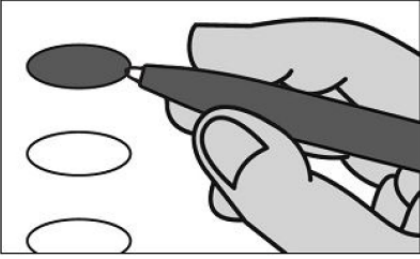
Typ:01 Seq:0036 Spl:01

OFFICIAL DEMOCRATIC GENERAL PRIMARY BALLOT

Huntingdon County

Commonwealth of Pennsylvania

MAY 19, 2026



INSTRUCTIONS TO VOTER:

1. To vote you must blacken the oval (●) completely. An oval (●) blackened to the left of the name of any candidate indicates a vote for that candidate.
2. To vote for a person whose name is not on the ballot, you must blacken the oval (●) to the left of the line provided, and write or print the name in the blank space provided for that purpose.
3. Use only a black pen.
4. If you make a mistake, DO NOT CORRECT. Ask for a new ballot.
5. Do not fold the ballot unless voting by absentee or mail-in ballot.
6. WARNING: If you receive an absentee or mail-in ballot and return your voted ballot by the deadline, you may not vote at your polling place on election day. If you are unable to return your voted absentee or mail-in ballot by the deadline, you may only vote a provisional ballot at your polling place on election day, unless you surrender your absentee or mail-in ballot and return envelope containing the Voter's Declaration to the judge of elections to be voided to vote by regular ballot.

SENATOR IN THE GENERAL ASSEMBLY 30TH DISTRICT VOTE FOR ONE

- SEAN STEEG
HUNTINGDON COUNTY
- _____
Write-in

REPRESENTATIVE IN THE GENERAL ASSEMBLY 81ST DISTRICT VOTE FOR ONE

- CALEB J DONAHUE
HUNTINGDON COUNTY
- _____
Write-in

MEMBER OF THE DEMOCRATIC STATE COMMITTEE 31st DISTRICT VOTE FOR ONE

- DENNIS PLANE
HUNTINGDON COUNTY MALE
- _____
Write-in

MEMBER OF DEMOCRATIC COUNTY COMMITTEE VOTE FOR NO MORE THAN TWO

- _____
Write-in
- _____
Write-in

GOVERNOR VOTE FOR ONE

- JOSH SHAPIRO
MONTGOMERY COUNTY
- _____
Write-in

LIEUTENANT GOVERNOR VOTE FOR ONE

- AUSTIN DAVIS
ALLEGHENY COUNTY
- _____
Write-in

REPRESENTATIVE IN CONGRESS 13TH DISTRICT VOTE FOR ONE

- BETH FARNHAM
ADAMS COUNTY
- _____
Write-in

HUNTINGDON COUNTY BOARD OF ELECTIONS

Scott Walk
Patricia Reed
Jeffrey Thomas

ORBISONIA

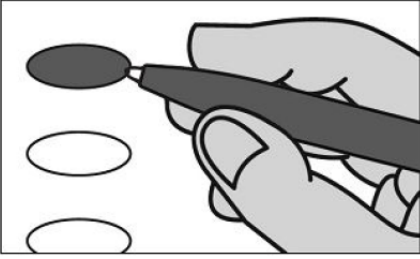
Typ:01 Seq:0037 Spl:01

OFFICIAL DEMOCRATIC GENERAL PRIMARY BALLOT

Huntingdon County

Commonwealth of Pennsylvania

MAY 19, 2026



INSTRUCTIONS TO VOTER:

1. To vote you must blacken the oval (●) completely. An oval (●) blackened to the left of the name of any candidate indicates a vote for that candidate.
2. To vote for a person whose name is not on the ballot, you must blacken the oval (●) to the left of the line provided, and write or print the name in the blank space provided for that purpose.
3. Use only a black pen.
4. If you make a mistake, DO NOT CORRECT. Ask for a new ballot.
5. Do not fold the ballot unless voting by absentee or mail-in ballot.
6. WARNING: If you receive an absentee or mail-in ballot and return your voted ballot by the deadline, you may not vote at your polling place on election day. If you are unable to return your voted absentee or mail-in ballot by the deadline, you may only vote a provisional ballot at your polling place on election day, unless you surrender your absentee or mail-in ballot and return envelope containing the Voter's Declaration to the judge of elections to be voided to vote by regular ballot.

**SENATOR IN THE GENERAL ASSEMBLY
30TH DISTRICT
VOTE FOR ONE**

- SEAN STEEG
HUNTINGDON COUNTY
- _____
Write-in

**REPRESENTATIVE IN THE GENERAL ASSEMBLY
81ST DISTRICT
VOTE FOR ONE**

- CALEB J DONAHUE
HUNTINGDON COUNTY
- _____
Write-in

**MEMBER OF THE DEMOCRATIC STATE COMMITTEE
31st DISTRICT
VOTE FOR ONE**

- DENNIS PLANE
HUNTINGDON COUNTY MALE
- _____
Write-in

**MEMBER OF DEMOCRATIC COUNTY COMMITTEE
VOTE FOR NO MORE THAN TWO**

- _____
Write-in
- _____
Write-in

**GOVERNOR
VOTE FOR ONE**

- JOSH SHAPIRO
MONTGOMERY COUNTY
- _____
Write-in

**LIEUTENANT GOVERNOR
VOTE FOR ONE**

- AUSTIN DAVIS
ALLEGHENY COUNTY
- _____
Write-in

**REPRESENTATIVE IN CONGRESS
13TH DISTRICT
VOTE FOR ONE**

- BETH FARNHAM
ADAMS COUNTY
- _____
Write-in

**HUNTINGDON COUNTY
BOARD OF ELECTIONS**

Scott Walk
Patricia Reed
Jeffrey Thomas

PENN

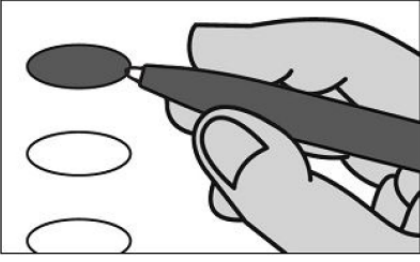
Typ:01 Seq:0038 Spl:01

OFFICIAL DEMOCRATIC GENERAL PRIMARY BALLOT

Huntingdon County

Commonwealth of Pennsylvania

MAY 19, 2026



INSTRUCTIONS TO VOTER:

1. To vote you must blacken the oval (●) completely. An oval (●) blackened to the left of the name of any candidate indicates a vote for that candidate.
2. To vote for a person whose name is not on the ballot, you must blacken the oval (●) to the left of the line provided, and write or print the name in the blank space provided for that purpose.
3. Use only a black pen.
4. If you make a mistake, DO NOT CORRECT. Ask for a new ballot.
5. Do not fold the ballot unless voting by absentee or mail-in ballot.
6. WARNING: If you receive an absentee or mail-in ballot and return your voted ballot by the deadline, you may not vote at your polling place on election day. If you are unable to return your voted absentee or mail-in ballot by the deadline, you may only vote a provisional ballot at your polling place on election day, unless you surrender your absentee or mail-in ballot and return envelope containing the Voter's Declaration to the judge of elections to be voided to vote by regular ballot.

**SENATOR IN THE GENERAL ASSEMBLY
30TH DISTRICT
VOTE FOR ONE**

- SEAN STEEG
HUNTINGDON COUNTY
- _____
Write-in

**REPRESENTATIVE IN THE GENERAL ASSEMBLY
81ST DISTRICT
VOTE FOR ONE**

- CALEB J DONAHUE
HUNTINGDON COUNTY
- _____
Write-in

**MEMBER OF THE DEMOCRATIC STATE COMMITTEE
31st DISTRICT
VOTE FOR ONE**

- DENNIS PLANE
HUNTINGDON COUNTY MALE
- _____
Write-in

**MEMBER OF DEMOCRATIC COUNTY COMMITTEE
VOTE FOR NO MORE THAN TWO**

- _____
Write-in
- _____
Write-in

**GOVERNOR
VOTE FOR ONE**

- JOSH SHAPIRO
MONTGOMERY COUNTY
- _____
Write-in

**LIEUTENANT GOVERNOR
VOTE FOR ONE**

- AUSTIN DAVIS
ALLEGHENY COUNTY
- _____
Write-in

**REPRESENTATIVE IN CONGRESS
13TH DISTRICT
VOTE FOR ONE**

- BETH FARNHAM
ADAMS COUNTY
- _____
Write-in

**HUNTINGDON COUNTY
BOARD OF ELECTIONS**

Scott Walk
Patricia Reed
Jeffrey Thomas

PETERSBURG

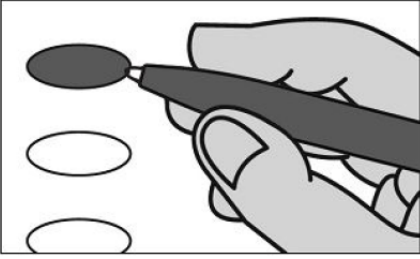
Typ:01 Seq:0039 Spl:01

OFFICIAL DEMOCRATIC GENERAL PRIMARY BALLOT

Huntingdon County

Commonwealth of Pennsylvania

MAY 19, 2026



INSTRUCTIONS TO VOTER:

1. To vote you must blacken the oval (●) completely. An oval (●) blackened to the left of the name of any candidate indicates a vote for that candidate.
2. To vote for a person whose name is not on the ballot, you must blacken the oval (●) to the left of the line provided, and write or print the name in the blank space provided for that purpose.
3. Use only a black pen.
4. If you make a mistake, DO NOT CORRECT. Ask for a new ballot.
5. Do not fold the ballot unless voting by absentee or mail-in ballot.
6. WARNING: If you receive an absentee or mail-in ballot and return your voted ballot by the deadline, you may not vote at your polling place on election day. If you are unable to return your voted absentee or mail-in ballot by the deadline, you may only vote a provisional ballot at your polling place on election day, unless you surrender your absentee or mail-in ballot and return envelope containing the Voter's Declaration to the judge of elections to be voided to vote by regular ballot.

**SENATOR IN THE GENERAL ASSEMBLY
30TH DISTRICT
VOTE FOR ONE**

- SEAN STEEG
HUNTINGDON COUNTY
- _____
Write-in

**REPRESENTATIVE IN THE GENERAL ASSEMBLY
81ST DISTRICT
VOTE FOR ONE**

- CALEB J DONAHUE
HUNTINGDON COUNTY
- _____
Write-in

**MEMBER OF THE DEMOCRATIC STATE COMMITTEE
31st DISTRICT
VOTE FOR ONE**

- DENNIS PLANE
HUNTINGDON COUNTY MALE
- _____
Write-in

**MEMBER OF DEMOCRATIC COUNTY COMMITTEE
VOTE FOR NO MORE THAN TWO**

- _____
Write-in
- _____
Write-in

**GOVERNOR
VOTE FOR ONE**

- JOSH SHAPIRO
MONTGOMERY COUNTY
- _____
Write-in

**LIEUTENANT GOVERNOR
VOTE FOR ONE**

- AUSTIN DAVIS
ALLEGHENY COUNTY
- _____
Write-in

**REPRESENTATIVE IN CONGRESS
13TH DISTRICT
VOTE FOR ONE**

- BETH FARNHAM
ADAMS COUNTY
- _____
Write-in

**HUNTINGDON COUNTY
BOARD OF ELECTIONS**

Scott Walk
Patricia Reed
Jeffrey Thomas

PORTER

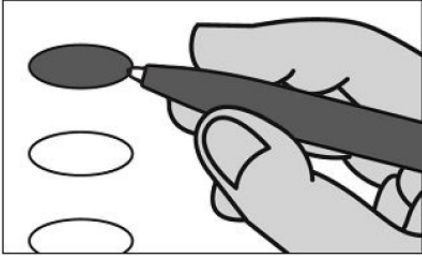
Typ:01 Seq:0040 Spl:01

OFFICIAL DEMOCRATIC GENERAL PRIMARY BALLOT

Huntingdon County

Commonwealth of Pennsylvania

MAY 19, 2026



INSTRUCTIONS TO VOTER:

1. To vote you must blacken the oval (●) completely. An oval (●) blackened to the left of the name of any candidate indicates a vote for that candidate.
2. To vote for a person whose name is not on the ballot, you must blacken the oval (●) to the left of the line provided, and write or print the name in the blank space provided for that purpose.
3. Use only a black pen.
4. If you make a mistake, DO NOT CORRECT. Ask for a new ballot.
5. Do not fold the ballot unless voting by absentee or mail-in ballot.
6. WARNING: If you receive an absentee or mail-in ballot and return your voted ballot by the deadline, you may not vote at your polling place on election day. If you are unable to return your voted absentee or mail-in ballot by the deadline, you may only vote a provisional ballot at your polling place on election day, unless you surrender your absentee or mail-in ballot and return envelope containing the Voter's Declaration to the judge of elections to be voided to vote by regular ballot.

**SENATOR IN THE GENERAL ASSEMBLY
30TH DISTRICT
VOTE FOR ONE**

- SEAN STEEG
HUNTINGDON COUNTY
- _____
Write-in

**REPRESENTATIVE IN THE GENERAL ASSEMBLY
81ST DISTRICT
VOTE FOR ONE**

- CALEB J DONAHUE
HUNTINGDON COUNTY
- _____
Write-in

**MEMBER OF THE DEMOCRATIC STATE COMMITTEE
31st DISTRICT
VOTE FOR ONE**

- DENNIS PLANE
HUNTINGDON COUNTY MALE
- _____
Write-in

**MEMBER OF DEMOCRATIC COUNTY COMMITTEE
VOTE FOR NO MORE THAN TWO**

- _____
Write-in
- _____
Write-in

**GOVERNOR
VOTE FOR ONE**

- JOSH SHAPIRO
MONTGOMERY COUNTY
- _____
Write-in

**LIEUTENANT GOVERNOR
VOTE FOR ONE**

- AUSTIN DAVIS
ALLEGHENY COUNTY
- _____
Write-in

**REPRESENTATIVE IN CONGRESS
13TH DISTRICT
VOTE FOR ONE**

- BETH FARNHAM
ADAMS COUNTY
- _____
Write-in

**HUNTINGDON COUNTY
BOARD OF ELECTIONS**

Scott Walk
Patricia Reeder
Jeffrey Thomas

ROCKHILL

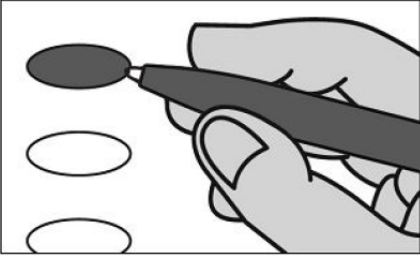
Typ:01 Seq:0041 Spl:01

OFFICIAL DEMOCRATIC GENERAL PRIMARY BALLOT

Huntingdon County

Commonwealth of Pennsylvania

MAY 19, 2026



INSTRUCTIONS TO VOTER:

1. To vote you must blacken the oval (●) completely. An oval (●) blackened to the left of the name of any candidate indicates a vote for that candidate.
2. To vote for a person whose name is not on the ballot, you must blacken the oval (●) to the left of the line provided, and write or print the name in the blank space provided for that purpose.
3. Use only a black pen.
4. If you make a mistake, DO NOT CORRECT. Ask for a new ballot.
5. Do not fold the ballot unless voting by absentee or mail-in ballot.
6. WARNING: If you receive an absentee or mail-in ballot and return your voted ballot by the deadline, you may not vote at your polling place on election day. If you are unable to return your voted absentee or mail-in ballot by the deadline, you may only vote a provisional ballot at your polling place on election day, unless you surrender your absentee or mail-in ballot and return envelope containing the Voter's Declaration to the judge of elections to be voided to vote by regular ballot.

**SENATOR IN THE GENERAL ASSEMBLY
30TH DISTRICT
VOTE FOR ONE**

- SEAN STEEG
HUNTINGDON COUNTY
- _____
Write-in

**REPRESENTATIVE IN THE GENERAL ASSEMBLY
81ST DISTRICT
VOTE FOR ONE**

- CALEB J DONAHUE
HUNTINGDON COUNTY
- _____
Write-in

**MEMBER OF THE DEMOCRATIC STATE COMMITTEE
31st DISTRICT
VOTE FOR ONE**

- DENNIS PLANE
HUNTINGDON COUNTY MALE
- _____
Write-in

**MEMBER OF DEMOCRATIC COUNTY COMMITTEE
VOTE FOR NO MORE THAN TWO**

- _____
Write-in
- _____
Write-in

**GOVERNOR
VOTE FOR ONE**

- JOSH SHAPIRO
MONTGOMERY COUNTY
- _____
Write-in

**LIEUTENANT GOVERNOR
VOTE FOR ONE**

- AUSTIN DAVIS
ALLEGHENY COUNTY
- _____
Write-in

**REPRESENTATIVE IN CONGRESS
13TH DISTRICT
VOTE FOR ONE**

- BETH FARNHAM
ADAMS COUNTY
- _____
Write-in

**HUNTINGDON COUNTY
BOARD OF ELECTIONS**

Scott Walk
Patricia Reed
Jeffrey Thomas

SALTILLO

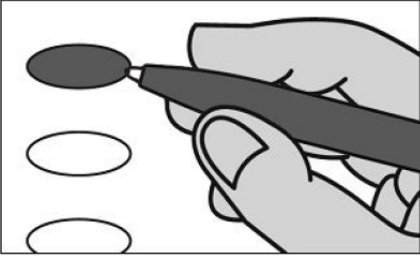
Typ:01 Seq:0042 Spl:01

OFFICIAL DEMOCRATIC GENERAL PRIMARY BALLOT

Huntingdon County

Commonwealth of Pennsylvania

MAY 19, 2026



INSTRUCTIONS TO VOTER:

1. To vote you must blacken the oval (●) completely. An oval (●) blackened to the left of the name of any candidate indicates a vote for that candidate.
2. To vote for a person whose name is not on the ballot, you must blacken the oval (●) to the left of the line provided, and write or print the name in the blank space provided for that purpose.
3. Use only a black pen.
4. If you make a mistake, DO NOT CORRECT. Ask for a new ballot.
5. Do not fold the ballot unless voting by absentee or mail-in ballot.
6. WARNING: If you receive an absentee or mail-in ballot and return your voted ballot by the deadline, you may not vote at your polling place on election day. If you are unable to return your voted absentee or mail-in ballot by the deadline, you may only vote a provisional ballot at your polling place on election day, unless you surrender your absentee or mail-in ballot and return envelope containing the Voter's Declaration to the judge of elections to be voided to vote by regular ballot.

**SENATOR IN THE GENERAL ASSEMBLY
30TH DISTRICT
VOTE FOR ONE**

- SEAN STEEG
HUNTINGDON COUNTY
- _____
Write-in

**REPRESENTATIVE IN THE GENERAL ASSEMBLY
81ST DISTRICT
VOTE FOR ONE**

- CALEB J DONAHUE
HUNTINGDON COUNTY
- _____
Write-in

**MEMBER OF THE DEMOCRATIC STATE COMMITTEE
31st DISTRICT
VOTE FOR ONE**

- DENNIS PLANE
HUNTINGDON COUNTY MALE
- _____
Write-in

**MEMBER OF DEMOCRATIC COUNTY COMMITTEE
VOTE FOR NO MORE THAN TWO**

- _____
Write-in
- _____
Write-in

**GOVERNOR
VOTE FOR ONE**

- JOSH SHAPIRO
MONTGOMERY COUNTY
- _____
Write-in

**LIEUTENANT GOVERNOR
VOTE FOR ONE**

- AUSTIN DAVIS
ALLEGHENY COUNTY
- _____
Write-in

**REPRESENTATIVE IN CONGRESS
13TH DISTRICT
VOTE FOR ONE**

- BETH FARNHAM
ADAMS COUNTY
- _____
Write-in

**HUNTINGDON COUNTY
BOARD OF ELECTIONS**

Scott Walk
Patricia Reeder
Jeffrey Thomas

SHADE GAP

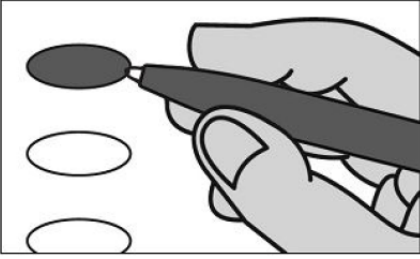
Typ:01 Seq:0043 Spl:01

OFFICIAL DEMOCRATIC GENERAL PRIMARY BALLOT

Huntingdon County

Commonwealth of Pennsylvania

MAY 19, 2026



INSTRUCTIONS TO VOTER:

1. To vote you must blacken the oval (●) completely. An oval (●) blackened to the left of the name of any candidate indicates a vote for that candidate.
2. To vote for a person whose name is not on the ballot, you must blacken the oval (●) to the left of the line provided, and write or print the name in the blank space provided for that purpose.
3. Use only a black pen.
4. If you make a mistake, DO NOT CORRECT. Ask for a new ballot.
5. Do not fold the ballot unless voting by absentee or mail-in ballot.
6. WARNING: If you receive an absentee or mail-in ballot and return your voted ballot by the deadline, you may not vote at your polling place on election day. If you are unable to return your voted absentee or mail-in ballot by the deadline, you may only vote a provisional ballot at your polling place on election day, unless you surrender your absentee or mail-in ballot and return envelope containing the Voter's Declaration to the judge of elections to be voided to vote by regular ballot.

**SENATOR IN THE GENERAL ASSEMBLY
30TH DISTRICT
VOTE FOR ONE**

- SEAN STEEG
HUNTINGDON COUNTY
- _____
Write-in

**REPRESENTATIVE IN THE GENERAL ASSEMBLY
81ST DISTRICT
VOTE FOR ONE**

- CALEB J DONAHUE
HUNTINGDON COUNTY
- _____
Write-in

**MEMBER OF THE DEMOCRATIC STATE COMMITTEE
31st DISTRICT
VOTE FOR ONE**

- DENNIS PLANE
HUNTINGDON COUNTY MALE
- _____
Write-in

**MEMBER OF DEMOCRATIC COUNTY COMMITTEE
VOTE FOR NO MORE THAN TWO**

- CALEB J DONAHUE
- _____
Write-in
- _____
Write-in

**GOVERNOR
VOTE FOR ONE**

- JOSH SHAPIRO
MONTGOMERY COUNTY
- _____
Write-in

**LIEUTENANT GOVERNOR
VOTE FOR ONE**

- AUSTIN DAVIS
ALLEGHENY COUNTY
- _____
Write-in

**REPRESENTATIVE IN CONGRESS
13TH DISTRICT
VOTE FOR ONE**

- BETH FARNHAM
ADAMS COUNTY
- _____
Write-in

**HUNTINGDON COUNTY
BOARD OF ELECTIONS**

Scott Walk
Patricia Reed
Jeffrey Thomas

SHIRLEY_MOUNT UNION

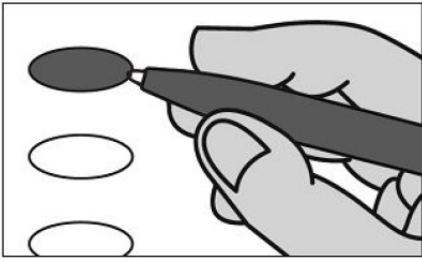
Typ:01 Seq:0044 Spl:01

OFFICIAL DEMOCRATIC GENERAL PRIMARY BALLOT

Huntingdon County

Commonwealth of Pennsylvania

MAY 19, 2026



INSTRUCTIONS TO VOTER:

1. To vote you must blacken the oval (●) completely. An oval (●) blackened to the left of the name of any candidate indicates a vote for that candidate.
2. To vote for a person whose name is not on the ballot, you must blacken the oval (●) to the left of the line provided, and write or print the name in the blank space provided for that purpose.
3. Use only a black pen.
4. If you make a mistake, DO NOT CORRECT. Ask for a new ballot.
5. Do not fold the ballot unless voting by absentee or mail-in ballot.
6. WARNING: If you receive an absentee or mail-in ballot and return your voted ballot by the deadline, you may not vote at your polling place on election day. If you are unable to return your voted absentee or mail-in ballot by the deadline, you may only vote a provisional ballot at your polling place on election day, unless you surrender your absentee or mail-in ballot and return envelope containing the Voter's Declaration to the judge of elections to be voided to vote by regular ballot.

**SENATOR IN THE GENERAL ASSEMBLY
30TH DISTRICT
VOTE FOR ONE**

- SEAN STEEG
HUNTINGDON COUNTY
- _____
Write-in

**REPRESENTATIVE IN THE GENERAL ASSEMBLY
81ST DISTRICT
VOTE FOR ONE**

- CALEB J DONAHUE
HUNTINGDON COUNTY
- _____
Write-in

**MEMBER OF THE DEMOCRATIC STATE COMMITTEE
31st DISTRICT
VOTE FOR ONE**

- DENNIS PLANE
HUNTINGDON COUNTY MALE
- _____
Write-in

**MEMBER OF DEMOCRATIC COUNTY COMMITTEE
VOTE FOR NO MORE THAN TWO**

- _____
Write-in
- _____
Write-in

**GOVERNOR
VOTE FOR ONE**

- JOSH SHAPIRO
MONTGOMERY COUNTY
- _____
Write-in

**LIEUTENANT GOVERNOR
VOTE FOR ONE**

- AUSTIN DAVIS
ALLEGHENY COUNTY
- _____
Write-in

**REPRESENTATIVE IN CONGRESS
13TH DISTRICT
VOTE FOR ONE**

- BETH FARNHAM
ADAMS COUNTY
- _____
Write-in

**HUNTINGDON COUNTY
BOARD OF ELECTIONS**

Scott Walk
Patricia Reeder
Jeffrey Thomas

SHIRLEY_SHIRLEY

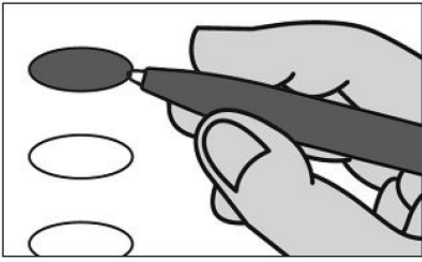
Typ:01 Seq:0045 Spl:01

OFFICIAL DEMOCRATIC GENERAL PRIMARY BALLOT

Huntingdon County

Commonwealth of Pennsylvania

MAY 19, 2026



INSTRUCTIONS TO VOTER:

1. To vote you must blacken the oval (●) completely. An oval (●) blackened to the left of the name of any candidate indicates a vote for that candidate.
2. To vote for a person whose name is not on the ballot, you must blacken the oval (●) to the left of the line provided, and write or print the name in the blank space provided for that purpose.
3. Use only a black pen.
4. If you make a mistake, DO NOT CORRECT. Ask for a new ballot.
5. Do not fold the ballot unless voting by absentee or mail-in ballot.
6. WARNING: If you receive an absentee or mail-in ballot and return your voted ballot by the deadline, you may not vote at your polling place on election day. If you are unable to return your voted absentee or mail-in ballot by the deadline, you may only vote a provisional ballot at your polling place on election day, unless you surrender your absentee or mail-in ballot and return envelope containing the Voter's Declaration to the judge of elections to be voided to vote by regular ballot.

**SENATOR IN THE GENERAL ASSEMBLY
30TH DISTRICT
VOTE FOR ONE**

- SEAN STEEG
HUNTINGDON COUNTY
- _____
Write-in

**REPRESENTATIVE IN THE GENERAL ASSEMBLY
81ST DISTRICT
VOTE FOR ONE**

- CALEB J DONAHUE
HUNTINGDON COUNTY
- _____
Write-in

**MEMBER OF THE DEMOCRATIC STATE COMMITTEE
31st DISTRICT
VOTE FOR ONE**

- DENNIS PLANE
HUNTINGDON COUNTY MALE
- _____
Write-in

**MEMBER OF DEMOCRATIC COUNTY COMMITTEE
VOTE FOR NO MORE THAN TWO**

- _____
Write-in
- _____
Write-in

**GOVERNOR
VOTE FOR ONE**

- JOSH SHAPIRO
MONTGOMERY COUNTY
- _____
Write-in

**LIEUTENANT GOVERNOR
VOTE FOR ONE**

- AUSTIN DAVIS
ALLEGHENY COUNTY
- _____
Write-in

**REPRESENTATIVE IN CONGRESS
13TH DISTRICT
VOTE FOR ONE**

- BETH FARNHAM
ADAMS COUNTY
- _____
Write-in

**HUNTINGDON COUNTY
BOARD OF ELECTIONS**

Scott Walk
Patricia Reed
Jeffrey Thomas

SHIRLEY_VALLEY POINT

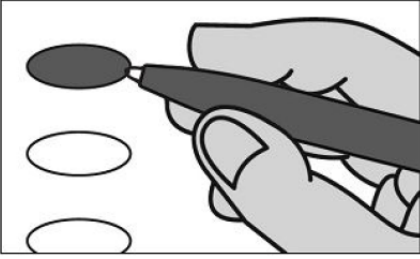
Typ:01 Seq:0046 Spl:01

OFFICIAL DEMOCRATIC GENERAL PRIMARY BALLOT

Huntingdon County

Commonwealth of Pennsylvania

MAY 19, 2026



INSTRUCTIONS TO VOTER:

1. To vote you must blacken the oval (●) completely. An oval (●) blackened to the left of the name of any candidate indicates a vote for that candidate.
2. To vote for a person whose name is not on the ballot, you must blacken the oval (●) to the left of the line provided, and write or print the name in the blank space provided for that purpose.
3. Use only a black pen.
4. If you make a mistake, DO NOT CORRECT. Ask for a new ballot.
5. Do not fold the ballot unless voting by absentee or mail-in ballot.
6. WARNING: If you receive an absentee or mail-in ballot and return your voted ballot by the deadline, you may not vote at your polling place on election day. If you are unable to return your voted absentee or mail-in ballot by the deadline, you may only vote a provisional ballot at your polling place on election day, unless you surrender your absentee or mail-in ballot and return envelope containing the Voter's Declaration to the judge of elections to be voided to vote by regular ballot.

SENATOR IN THE GENERAL ASSEMBLY 30TH DISTRICT VOTE FOR ONE

- SEAN STEEG
HUNTINGDON COUNTY
- _____
Write-in

REPRESENTATIVE IN THE GENERAL ASSEMBLY 81ST DISTRICT VOTE FOR ONE

- CALEB J DONAHUE
HUNTINGDON COUNTY
- _____
Write-in

MEMBER OF THE DEMOCRATIC STATE COMMITTEE 31st DISTRICT VOTE FOR ONE

- DENNIS PLANE
HUNTINGDON COUNTY MALE
- _____
Write-in

MEMBER OF DEMOCRATIC COUNTY COMMITTEE VOTE FOR NO MORE THAN TWO

- _____
Write-in
- _____
Write-in

GOVERNOR VOTE FOR ONE

- JOSH SHAPIRO
MONTGOMERY COUNTY
- _____
Write-in

LIEUTENANT GOVERNOR VOTE FOR ONE

- AUSTIN DAVIS
ALLEGHENY COUNTY
- _____
Write-in

REPRESENTATIVE IN CONGRESS 13TH DISTRICT VOTE FOR ONE

- BETH FARNHAM
ADAMS COUNTY
- _____
Write-in

HUNTINGDON COUNTY BOARD OF ELECTIONS

Scott Walk
Patricia Reeder
Jeffrey Thomas

SHIRLEYSBURG

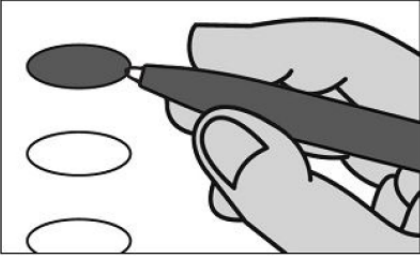
Typ:01 Seq:0047 Spl:01

OFFICIAL DEMOCRATIC GENERAL PRIMARY BALLOT

Huntingdon County

Commonwealth of Pennsylvania

MAY 19, 2026



INSTRUCTIONS TO VOTER:

1. To vote you must blacken the oval (●) completely. An oval (●) blackened to the left of the name of any candidate indicates a vote for that candidate.
2. To vote for a person whose name is not on the ballot, you must blacken the oval (●) to the left of the line provided, and write or print the name in the blank space provided for that purpose.
3. Use only a black pen.
4. If you make a mistake, DO NOT CORRECT. Ask for a new ballot.
5. Do not fold the ballot unless voting by absentee or mail-in ballot.
6. WARNING: If you receive an absentee or mail-in ballot and return your voted ballot by the deadline, you may not vote at your polling place on election day. If you are unable to return your voted absentee or mail-in ballot by the deadline, you may only vote a provisional ballot at your polling place on election day, unless you surrender your absentee or mail-in ballot and return envelope containing the Voter's Declaration to the judge of elections to be voided to vote by regular ballot.

**SENATOR IN THE GENERAL ASSEMBLY
30TH DISTRICT
VOTE FOR ONE**

- SEAN STEEG
HUNTINGDON COUNTY
- _____
Write-in

**REPRESENTATIVE IN THE GENERAL ASSEMBLY
81ST DISTRICT
VOTE FOR ONE**

- CALEB J DONAHUE
HUNTINGDON COUNTY
- _____
Write-in

**MEMBER OF THE DEMOCRATIC STATE COMMITTEE
31st DISTRICT
VOTE FOR ONE**

- DENNIS PLANE
HUNTINGDON COUNTY MALE
- _____
Write-in

**MEMBER OF DEMOCRATIC COUNTY COMMITTEE
VOTE FOR NO MORE THAN TWO**

- _____
Write-in
- _____
Write-in

**GOVERNOR
VOTE FOR ONE**

- JOSH SHAPIRO
MONTGOMERY COUNTY
- _____
Write-in

**LIEUTENANT GOVERNOR
VOTE FOR ONE**

- AUSTIN DAVIS
ALLEGHENY COUNTY
- _____
Write-in

**REPRESENTATIVE IN CONGRESS
13TH DISTRICT
VOTE FOR ONE**

- BETH FARNHAM
ADAMS COUNTY
- _____
Write-in

**HUNTINGDON COUNTY
BOARD OF ELECTIONS**

Scott Walk
Patricia Reeder
Jeffrey Thomas

SMITHFIELD

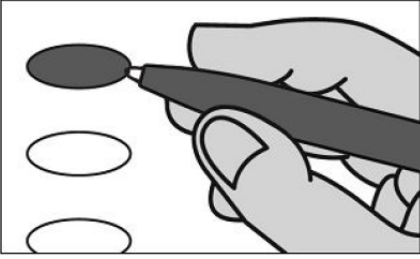
Typ:01 Seq:0048 Spl:01

OFFICIAL DEMOCRATIC GENERAL PRIMARY BALLOT

Huntingdon County

Commonwealth of Pennsylvania

MAY 19, 2026



INSTRUCTIONS TO VOTER:

1. To vote you must blacken the oval (●) completely. An oval (●) blackened to the left of the name of any candidate indicates a vote for that candidate.
2. To vote for a person whose name is not on the ballot, you must blacken the oval (●) to the left of the line provided, and write or print the name in the blank space provided for that purpose.
3. Use only a black pen.
4. If you make a mistake, DO NOT CORRECT. Ask for a new ballot.
5. Do not fold the ballot unless voting by absentee or mail-in ballot.
6. WARNING: If you receive an absentee or mail-in ballot and return your voted ballot by the deadline, you may not vote at your polling place on election day. If you are unable to return your voted absentee or mail-in ballot by the deadline, you may only vote a provisional ballot at your polling place on election day, unless you surrender your absentee or mail-in ballot and return envelope containing the Voter's Declaration to the judge of elections to be voided to vote by regular ballot.

**SENATOR IN THE GENERAL ASSEMBLY
30TH DISTRICT
VOTE FOR ONE**

- SEAN STEEG
HUNTINGDON COUNTY
- _____
Write-in

**REPRESENTATIVE IN THE GENERAL ASSEMBLY
81ST DISTRICT
VOTE FOR ONE**

- CALEB J DONAHUE
HUNTINGDON COUNTY
- _____
Write-in

**MEMBER OF THE DEMOCRATIC STATE COMMITTEE
31st DISTRICT
VOTE FOR ONE**

- DENNIS PLANE
HUNTINGDON COUNTY MALE
- _____
Write-in

**MEMBER OF DEMOCRATIC COUNTY COMMITTEE
VOTE FOR NO MORE THAN TWO**

- _____
Write-in
- _____
Write-in

**GOVERNOR
VOTE FOR ONE**

- JOSH SHAPIRO
MONTGOMERY COUNTY
- _____
Write-in

**LIEUTENANT GOVERNOR
VOTE FOR ONE**

- AUSTIN DAVIS
ALLEGHENY COUNTY
- _____
Write-in

**REPRESENTATIVE IN CONGRESS
13TH DISTRICT
VOTE FOR ONE**

- BETH FARNHAM
ADAMS COUNTY
- _____
Write-in

**HUNTINGDON COUNTY
BOARD OF ELECTIONS**

Scott Walk
Patricia Reeder
Jeffrey Thomas

SPRINGFIELD

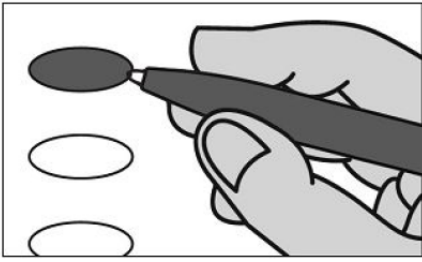
Typ:01 Seq:0049 Spl:01

OFFICIAL DEMOCRATIC GENERAL PRIMARY BALLOT

Huntingdon County

Commonwealth of Pennsylvania

MAY 19, 2026



INSTRUCTIONS TO VOTER:

1. To vote you must blacken the oval (●) completely. An oval (●) blackened to the left of the name of any candidate indicates a vote for that candidate.
2. To vote for a person whose name is not on the ballot, you must blacken the oval (●) to the left of the line provided, and write or print the name in the blank space provided for that purpose.
3. Use only a black pen.
4. If you make a mistake, DO NOT CORRECT. Ask for a new ballot.
5. Do not fold the ballot unless voting by absentee or mail-in ballot.
6. WARNING: If you receive an absentee or mail-in ballot and return your voted ballot by the deadline, you may not vote at your polling place on election day. If you are unable to return your voted absentee or mail-in ballot by the deadline, you may only vote a provisional ballot at your polling place on election day, unless you surrender your absentee or mail-in ballot and return envelope containing the Voter's Declaration to the judge of elections to be voided to vote by regular ballot.

SENATOR IN THE GENERAL ASSEMBLY 30TH DISTRICT VOTE FOR ONE

- SEAN STEEG
HUNTINGDON COUNTY
- _____
Write-in

REPRESENTATIVE IN THE GENERAL ASSEMBLY 81ST DISTRICT VOTE FOR ONE

- CALEB J DONAHUE
HUNTINGDON COUNTY
- _____
Write-in

MEMBER OF THE DEMOCRATIC STATE COMMITTEE 31st DISTRICT VOTE FOR ONE

- DENNIS PLANE
HUNTINGDON COUNTY MALE
- _____
Write-in

MEMBER OF DEMOCRATIC COUNTY COMMITTEE VOTE FOR NO MORE THAN TWO

- _____
Write-in
- _____
Write-in

GOVERNOR VOTE FOR ONE

- JOSH SHAPIRO
MONTGOMERY COUNTY
- _____
Write-in

LIEUTENANT GOVERNOR VOTE FOR ONE

- AUSTIN DAVIS
ALLEGHENY COUNTY
- _____
Write-in

REPRESENTATIVE IN CONGRESS 13TH DISTRICT VOTE FOR ONE

- BETH FARNHAM
ADAMS COUNTY
- _____
Write-in

HUNTINGDON COUNTY BOARD OF ELECTIONS

Scott Walk
Patricia Reed
Jeffrey Thomas

SPRUCE CREEK

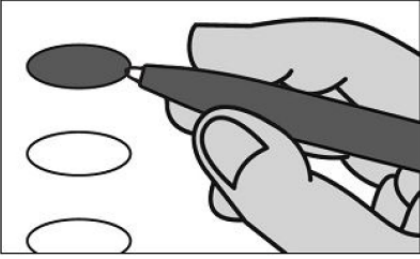
Typ:01 Seq:0050 Spl:01

OFFICIAL DEMOCRATIC GENERAL PRIMARY BALLOT

Huntingdon County

Commonwealth of Pennsylvania

MAY 19, 2026



INSTRUCTIONS TO VOTER:

1. To vote you must blacken the oval (●) completely. An oval (●) blackened to the left of the name of any candidate indicates a vote for that candidate.
2. To vote for a person whose name is not on the ballot, you must blacken the oval (●) to the left of the line provided, and write or print the name in the blank space provided for that purpose.
3. Use only a black pen.
4. If you make a mistake, DO NOT CORRECT. Ask for a new ballot.
5. Do not fold the ballot unless voting by absentee or mail-in ballot.
6. WARNING: If you receive an absentee or mail-in ballot and return your voted ballot by the deadline, you may not vote at your polling place on election day. If you are unable to return your voted absentee or mail-in ballot by the deadline, you may only vote a provisional ballot at your polling place on election day, unless you surrender your absentee or mail-in ballot and return envelope containing the Voter's Declaration to the judge of elections to be voided to vote by regular ballot.

SENATOR IN THE GENERAL ASSEMBLY 30TH DISTRICT VOTE FOR ONE

- SEAN STEEG
HUNTINGDON COUNTY
- _____
Write-in

REPRESENTATIVE IN THE GENERAL ASSEMBLY 81ST DISTRICT VOTE FOR ONE

- CALEB J DONAHUE
HUNTINGDON COUNTY
- _____
Write-in

MEMBER OF THE DEMOCRATIC STATE COMMITTEE 31st DISTRICT VOTE FOR ONE

- DENNIS PLANE
HUNTINGDON COUNTY MALE
- _____
Write-in

MEMBER OF DEMOCRATIC COUNTY COMMITTEE VOTE FOR NO MORE THAN TWO

- _____
Write-in
- _____
Write-in

GOVERNOR VOTE FOR ONE

- JOSH SHAPIRO
MONTGOMERY COUNTY
- _____
Write-in

LIEUTENANT GOVERNOR VOTE FOR ONE

- AUSTIN DAVIS
ALLEGHENY COUNTY
- _____
Write-in

REPRESENTATIVE IN CONGRESS 13TH DISTRICT VOTE FOR ONE

- BETH FARNHAM
ADAMS COUNTY
- _____
Write-in

TELL

Typ:01 Seq:0051 Spl:01

HUNTINGDON COUNTY BOARD OF ELECTIONS

Scott Walk
Patricia Reeder
Jeffrey Thomas

TELL

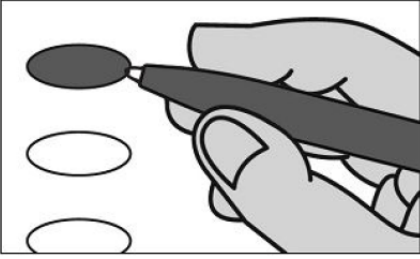
OFFICIAL DEMOCRATIC GENERAL PRIMARY BALLOT
HUNTINGDON COUNTY, PENNSYLVANIA
MAY 19, 2026

OFFICIAL DEMOCRATIC GENERAL PRIMARY BALLOT

Huntingdon County

Commonwealth of Pennsylvania

MAY 19, 2026



INSTRUCTIONS TO VOTER:

1. To vote you must blacken the oval (●) completely. An oval (●) blackened to the left of the name of any candidate indicates a vote for that candidate.
2. To vote for a person whose name is not on the ballot, you must blacken the oval (●) to the left of the line provided, and write or print the name in the blank space provided for that purpose.
3. Use only a black pen.
4. If you make a mistake, DO NOT CORRECT. Ask for a new ballot.
5. Do not fold the ballot unless voting by absentee or mail-in ballot.
6. WARNING: If you receive an absentee or mail-in ballot and return your voted ballot by the deadline, you may not vote at your polling place on election day. If you are unable to return your voted absentee or mail-in ballot by the deadline, you may only vote a provisional ballot at your polling place on election day, unless you surrender your absentee or mail-in ballot and return envelope containing the Voter's Declaration to the judge of elections to be voided to vote by regular ballot.

**SENATOR IN THE GENERAL ASSEMBLY
30TH DISTRICT
VOTE FOR ONE**

- SEAN STEEG
HUNTINGDON COUNTY
- _____
Write-in

**REPRESENTATIVE IN THE GENERAL ASSEMBLY
81ST DISTRICT
VOTE FOR ONE**

- CALEB J DONAHUE
HUNTINGDON COUNTY
- _____
Write-in

**MEMBER OF THE DEMOCRATIC STATE COMMITTEE
31st DISTRICT
VOTE FOR ONE**

- DENNIS PLANE
HUNTINGDON COUNTY MALE
- _____
Write-in

**MEMBER OF DEMOCRATIC COUNTY COMMITTEE
VOTE FOR NO MORE THAN TWO**

- _____
Write-in
- _____
Write-in

**GOVERNOR
VOTE FOR ONE**

- JOSH SHAPIRO
MONTGOMERY COUNTY
- _____
Write-in

**LIEUTENANT GOVERNOR
VOTE FOR ONE**

- AUSTIN DAVIS
ALLEGHENY COUNTY
- _____
Write-in

**REPRESENTATIVE IN CONGRESS
13TH DISTRICT
VOTE FOR ONE**

- BETH FARNHAM
ADAMS COUNTY
- _____
Write-in

**HUNTINGDON COUNTY
BOARD OF ELECTIONS**

Scott Walk
Patricia Reed
Jeffrey Thomas

THREE SPRINGS

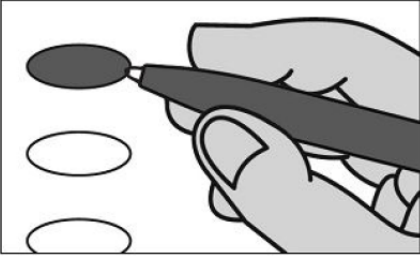
Typ:01 Seq:0052 Spl:01

OFFICIAL DEMOCRATIC GENERAL PRIMARY BALLOT

Huntingdon County

Commonwealth of Pennsylvania

MAY 19, 2026



INSTRUCTIONS TO VOTER:

1. To vote you must blacken the oval (●) completely. An oval (●) blackened to the left of the name of any candidate indicates a vote for that candidate.
2. To vote for a person whose name is not on the ballot, you must blacken the oval (●) to the left of the line provided, and write or print the name in the blank space provided for that purpose.
3. Use only a black pen.
4. If you make a mistake, DO NOT CORRECT. Ask for a new ballot.
5. Do not fold the ballot unless voting by absentee or mail-in ballot.
6. WARNING: If you receive an absentee or mail-in ballot and return your voted ballot by the deadline, you may not vote at your polling place on election day. If you are unable to return your voted absentee or mail-in ballot by the deadline, you may only vote a provisional ballot at your polling place on election day, unless you surrender your absentee or mail-in ballot and return envelope containing the Voter's Declaration to the judge of elections to be voided to vote by regular ballot.

**SENATOR IN THE GENERAL ASSEMBLY
30TH DISTRICT
VOTE FOR ONE**

- SEAN STEEG
HUNTINGDON COUNTY
- _____
Write-in

**REPRESENTATIVE IN THE GENERAL ASSEMBLY
81ST DISTRICT
VOTE FOR ONE**

- CALEB J DONAHUE
HUNTINGDON COUNTY
- _____
Write-in

**MEMBER OF THE DEMOCRATIC STATE COMMITTEE
31st DISTRICT
VOTE FOR ONE**

- DENNIS PLANE
HUNTINGDON COUNTY MALE
- _____
Write-in

**MEMBER OF DEMOCRATIC COUNTY COMMITTEE
VOTE FOR NO MORE THAN TWO**

- _____
Write-in
- _____
Write-in

**GOVERNOR
VOTE FOR ONE**

- JOSH SHAPIRO
MONTGOMERY COUNTY
- _____
Write-in

**LIEUTENANT GOVERNOR
VOTE FOR ONE**

- AUSTIN DAVIS
ALLEGHENY COUNTY
- _____
Write-in

**REPRESENTATIVE IN CONGRESS
13TH DISTRICT
VOTE FOR ONE**

- BETH FARNHAM
ADAMS COUNTY
- _____
Write-in

**HUNTINGDON COUNTY
BOARD OF ELECTIONS**

Scott Walk
Patricia Reeder
Jeffrey Thomas

TODD

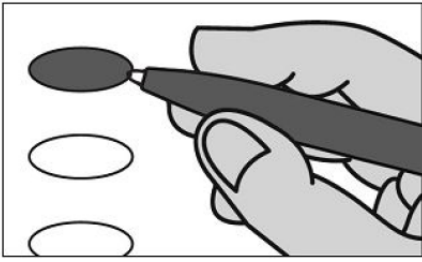
Typ:01 Seq:0053 Spl:01

OFFICIAL DEMOCRATIC GENERAL PRIMARY BALLOT

Huntingdon County

Commonwealth of Pennsylvania

MAY 19, 2026



INSTRUCTIONS TO VOTER:

1. To vote you must blacken the oval (●) completely. An oval (●) blackened to the left of the name of any candidate indicates a vote for that candidate.
2. To vote for a person whose name is not on the ballot, you must blacken the oval (●) to the left of the line provided, and write or print the name in the blank space provided for that purpose.
3. Use only a black pen.
4. If you make a mistake, DO NOT CORRECT. Ask for a new ballot.
5. Do not fold the ballot unless voting by absentee or mail-in ballot.
6. WARNING: If you receive an absentee or mail-in ballot and return your voted ballot by the deadline, you may not vote at your polling place on election day. If you are unable to return your voted absentee or mail-in ballot by the deadline, you may only vote a provisional ballot at your polling place on election day, unless you surrender your absentee or mail-in ballot and return envelope containing the Voter's Declaration to the judge of elections to be voided to vote by regular ballot.

**SENATOR IN THE GENERAL ASSEMBLY
30TH DISTRICT
VOTE FOR ONE**

- SEAN STEEG
HUNTINGDON COUNTY
- _____
Write-in

**REPRESENTATIVE IN THE GENERAL ASSEMBLY
81ST DISTRICT
VOTE FOR ONE**

- CALEB J DONAHUE
HUNTINGDON COUNTY
- _____
Write-in

**MEMBER OF THE DEMOCRATIC STATE COMMITTEE
31st DISTRICT
VOTE FOR ONE**

- DENNIS PLANE
HUNTINGDON COUNTY MALE
- _____
Write-in

**MEMBER OF DEMOCRATIC COUNTY COMMITTEE
VOTE FOR NO MORE THAN TWO**

- _____
Write-in
- _____
Write-in

**GOVERNOR
VOTE FOR ONE**

- JOSH SHAPIRO
MONTGOMERY COUNTY
- _____
Write-in

**LIEUTENANT GOVERNOR
VOTE FOR ONE**

- AUSTIN DAVIS
ALLEGHENY COUNTY
- _____
Write-in

**REPRESENTATIVE IN CONGRESS
13TH DISTRICT
VOTE FOR ONE**

- BETH FARNHAM
ADAMS COUNTY
- _____
Write-in

**HUNTINGDON COUNTY
BOARD OF ELECTIONS**

Scott Walk
Patricia Reeder
Jeffrey Thomas

UNION

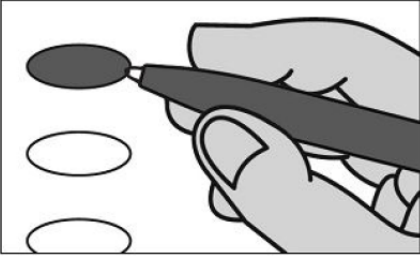
Typ:01 Seq:0054 Spl:01

OFFICIAL DEMOCRATIC GENERAL PRIMARY BALLOT

Huntingdon County

Commonwealth of Pennsylvania

MAY 19, 2026



INSTRUCTIONS TO VOTER:

1. To vote you must blacken the oval (●) completely. An oval (●) blackened to the left of the name of any candidate indicates a vote for that candidate.
2. To vote for a person whose name is not on the ballot, you must blacken the oval (●) to the left of the line provided, and write or print the name in the blank space provided for that purpose.
3. Use only a black pen.
4. If you make a mistake, DO NOT CORRECT. Ask for a new ballot.
5. Do not fold the ballot unless voting by absentee or mail-in ballot.
6. WARNING: If you receive an absentee or mail-in ballot and return your voted ballot by the deadline, you may not vote at your polling place on election day. If you are unable to return your voted absentee or mail-in ballot by the deadline, you may only vote a provisional ballot at your polling place on election day, unless you surrender your absentee or mail-in ballot and return envelope containing the Voter's Declaration to the judge of elections to be voided to vote by regular ballot.

**SENATOR IN THE GENERAL ASSEMBLY
30TH DISTRICT
VOTE FOR ONE**

- SEAN STEEG
HUNTINGDON COUNTY
- _____
Write-in

**REPRESENTATIVE IN THE GENERAL ASSEMBLY
81ST DISTRICT
VOTE FOR ONE**

- CALEB J DONAHUE
HUNTINGDON COUNTY
- _____
Write-in

**MEMBER OF THE DEMOCRATIC STATE COMMITTEE
31st DISTRICT
VOTE FOR ONE**

- DENNIS PLANE
HUNTINGDON COUNTY MALE
- _____
Write-in

**MEMBER OF DEMOCRATIC COUNTY COMMITTEE
VOTE FOR NO MORE THAN TWO**

- _____
Write-in
- _____
Write-in

**GOVERNOR
VOTE FOR ONE**

- JOSH SHAPIRO
MONTGOMERY COUNTY
- _____
Write-in

**LIEUTENANT GOVERNOR
VOTE FOR ONE**

- AUSTIN DAVIS
ALLEGHENY COUNTY
- _____
Write-in

**REPRESENTATIVE IN CONGRESS
13TH DISTRICT
VOTE FOR ONE**

- BETH FARNHAM
ADAMS COUNTY
- _____
Write-in

**HUNTINGDON COUNTY
BOARD OF ELECTIONS**

Scott Walk
Patricia Reeder
Jeffrey Thomas

WALKER

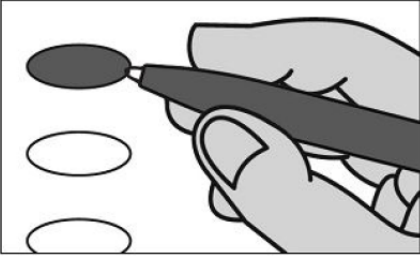
Typ:01 Seq:0055 Spl:01

OFFICIAL DEMOCRATIC GENERAL PRIMARY BALLOT

Huntingdon County

Commonwealth of Pennsylvania

MAY 19, 2026



INSTRUCTIONS TO VOTER:

1. To vote you must blacken the oval (●) completely. An oval (●) blackened to the left of the name of any candidate indicates a vote for that candidate.
2. To vote for a person whose name is not on the ballot, you must blacken the oval (●) to the left of the line provided, and write or print the name in the blank space provided for that purpose.
3. Use only a black pen.
4. If you make a mistake, DO NOT CORRECT. Ask for a new ballot.
5. Do not fold the ballot unless voting by absentee or mail-in ballot.
6. WARNING: If you receive an absentee or mail-in ballot and return your voted ballot by the deadline, you may not vote at your polling place on election day. If you are unable to return your voted absentee or mail-in ballot by the deadline, you may only vote a provisional ballot at your polling place on election day, unless you surrender your absentee or mail-in ballot and return envelope containing the Voter's Declaration to the judge of elections to be voided to vote by regular ballot.

**SENATOR IN THE GENERAL ASSEMBLY
30TH DISTRICT
VOTE FOR ONE**

- SEAN STEEG
HUNTINGDON COUNTY
- _____
Write-in

**REPRESENTATIVE IN THE GENERAL ASSEMBLY
80TH DISTRICT
VOTE FOR ONE**

- SARAH HOLLAND
BLAIR COUNTY
- _____
Write-in

**MEMBER OF THE DEMOCRATIC STATE COMMITTEE
31st DISTRICT
VOTE FOR ONE**

- DENNIS PLANE
HUNTINGDON COUNTY MALE
- _____
Write-in

**MEMBER OF DEMOCRATIC COUNTY COMMITTEE
VOTE FOR NO MORE THAN TWO**

- _____
Write-in
- _____
Write-in

**GOVERNOR
VOTE FOR ONE**

- JOSH SHAPIRO
MONTGOMERY COUNTY
- _____
Write-in

**LIEUTENANT GOVERNOR
VOTE FOR ONE**

- AUSTIN DAVIS
ALLEGHENY COUNTY
- _____
Write-in

**REPRESENTATIVE IN CONGRESS
13TH DISTRICT
VOTE FOR ONE**

- BETH FARNHAM
ADAMS COUNTY
- _____
Write-in

**HUNTINGDON COUNTY
BOARD OF ELECTIONS**

Scott Walk
Patricia Reed
Jeffrey Thomas

WARRIORS MARK

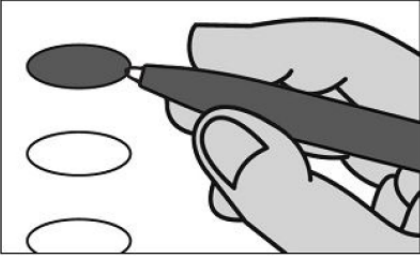
Typ:01 Seq:0056 Spl:01

OFFICIAL DEMOCRATIC GENERAL PRIMARY BALLOT

Huntingdon County

Commonwealth of Pennsylvania

MAY 19, 2026



INSTRUCTIONS TO VOTER:

1. To vote you must blacken the oval (●) completely. An oval (●) blackened to the left of the name of any candidate indicates a vote for that candidate.
2. To vote for a person whose name is not on the ballot, you must blacken the oval (●) to the left of the line provided, and write or print the name in the blank space provided for that purpose.
3. Use only a black pen.
4. If you make a mistake, DO NOT CORRECT. Ask for a new ballot.
5. Do not fold the ballot unless voting by absentee or mail-in ballot.
6. WARNING: If you receive an absentee or mail-in ballot and return your voted ballot by the deadline, you may not vote at your polling place on election day. If you are unable to return your voted absentee or mail-in ballot by the deadline, you may only vote a provisional ballot at your polling place on election day, unless you surrender your absentee or mail-in ballot and return envelope containing the Voter's Declaration to the judge of elections to be voided to vote by regular ballot.

**SENATOR IN THE GENERAL ASSEMBLY
30TH DISTRICT
VOTE FOR ONE**

- SEAN STEEG
HUNTINGDON COUNTY
- _____
Write-in

**REPRESENTATIVE IN THE GENERAL ASSEMBLY
81ST DISTRICT
VOTE FOR ONE**

- CALEB J DONAHUE
HUNTINGDON COUNTY
- _____
Write-in

**MEMBER OF THE DEMOCRATIC STATE COMMITTEE
31st DISTRICT
VOTE FOR ONE**

- DENNIS PLANE
HUNTINGDON COUNTY MALE
- _____
Write-in

**MEMBER OF DEMOCRATIC COUNTY COMMITTEE
VOTE FOR NO MORE THAN TWO**

- _____
Write-in
- _____
Write-in

**GOVERNOR
VOTE FOR ONE**

- JOSH SHAPIRO
MONTGOMERY COUNTY
- _____
Write-in

**LIEUTENANT GOVERNOR
VOTE FOR ONE**

- AUSTIN DAVIS
ALLEGHENY COUNTY
- _____
Write-in

**REPRESENTATIVE IN CONGRESS
13TH DISTRICT
VOTE FOR ONE**

- BETH FARNHAM
ADAMS COUNTY
- _____
Write-in

**HUNTINGDON COUNTY
BOARD OF ELECTIONS**

Scott Walk
Patricia Reed
Jeffrey Thomas

WEST

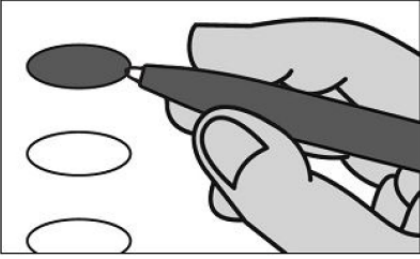
Typ:01 Seq:0057 Spl:01

OFFICIAL DEMOCRATIC GENERAL PRIMARY BALLOT

Huntingdon County

Commonwealth of Pennsylvania

MAY 19, 2026



INSTRUCTIONS TO VOTER:

1. To vote you must blacken the oval (●) completely. An oval (●) blackened to the left of the name of any candidate indicates a vote for that candidate.
2. To vote for a person whose name is not on the ballot, you must blacken the oval (●) to the left of the line provided, and write or print the name in the blank space provided for that purpose.
3. Use only a black pen.
4. If you make a mistake, DO NOT CORRECT. Ask for a new ballot.
5. Do not fold the ballot unless voting by absentee or mail-in ballot.
6. WARNING: If you receive an absentee or mail-in ballot and return your voted ballot by the deadline, you may not vote at your polling place on election day. If you are unable to return your voted absentee or mail-in ballot by the deadline, you may only vote a provisional ballot at your polling place on election day, unless you surrender your absentee or mail-in ballot and return envelope containing the Voter's Declaration to the judge of elections to be voided to vote by regular ballot.

SENATOR IN THE GENERAL ASSEMBLY 30TH DISTRICT VOTE FOR ONE

- SEAN STEEG
HUNTINGDON COUNTY
- _____
Write-in

REPRESENTATIVE IN THE GENERAL ASSEMBLY 81ST DISTRICT VOTE FOR ONE

- CALEB J DONAHUE
HUNTINGDON COUNTY
- _____
Write-in

MEMBER OF THE DEMOCRATIC STATE COMMITTEE 31st DISTRICT VOTE FOR ONE

- DENNIS PLANE
HUNTINGDON COUNTY MALE
- _____
Write-in

MEMBER OF DEMOCRATIC COUNTY COMMITTEE VOTE FOR NO MORE THAN TWO

- _____
Write-in
- _____
Write-in

GOVERNOR VOTE FOR ONE

- JOSH SHAPIRO
MONTGOMERY COUNTY
- _____
Write-in

LIEUTENANT GOVERNOR VOTE FOR ONE

- AUSTIN DAVIS
ALLEGHENY COUNTY
- _____
Write-in

REPRESENTATIVE IN CONGRESS 13TH DISTRICT VOTE FOR ONE

- BETH FARNHAM
ADAMS COUNTY
- _____
Write-in

HUNTINGDON COUNTY BOARD OF ELECTIONS

Scott Walk
Patricia Reed
Jeffrey Thomas

WOOD

Typ:01 Seq:0058 Spl:01